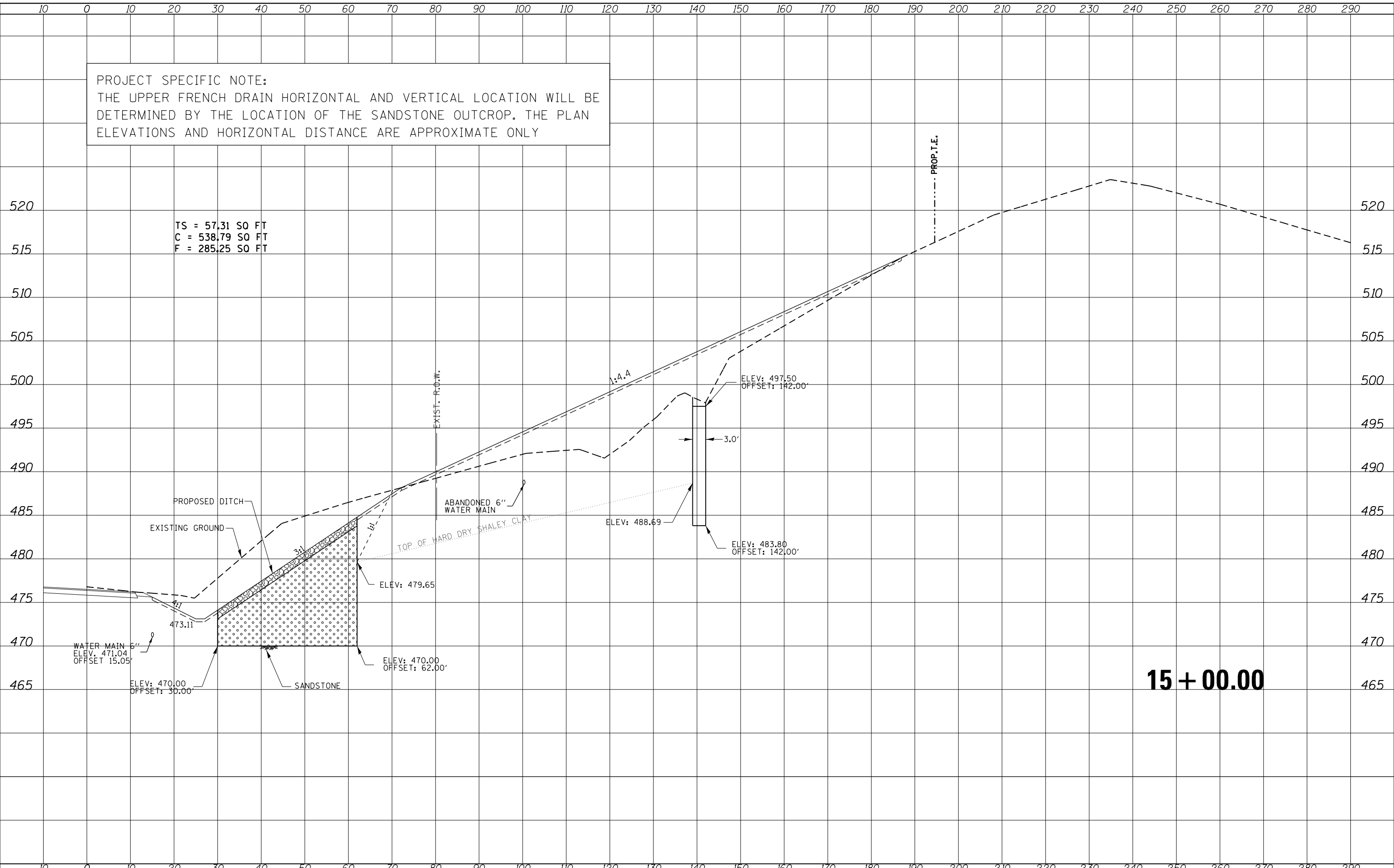


PROJECT SPECIFIC NOTE:  
 THE UPPER FRENCH DRAIN HORIZONTAL AND VERTICAL LOCATION WILL BE DETERMINED BY THE LOCATION OF THE SANDSTONE OUTCROP. THE PLAN ELEVATIONS AND HORIZONTAL DISTANCE ARE APPROXIMATE ONLY

|                 |  |
|-----------------|--|
| DATE            |  |
| BY              |  |
| FINISHED SURVEY |  |
| PLOTTED         |  |
| TEMPLATE        |  |
| AREAS CHECKED   |  |
| NO.             |  |

|                 |  |
|-----------------|--|
| DATE            |  |
| BY              |  |
| ORIGINAL SURVEY |  |
| PLOTTED         |  |
| TEMPLATE        |  |
| AREAS CHECKED   |  |
| NO.             |  |



FILE NAME =  
 US24DuncMillsSlide REVISED SHEET FILE .dgn

USER NAME = aubreys  
 PLOT SCALE = 20.000' / in.  
 PLOT DATE = 3/21/2013

|            |            |
|------------|------------|
| DESIGNED - | REVISIED - |
| DRAWN -    | REVISIED - |
| CHECKED -  | REVISIED - |
| DATE -     | REVISIED - |

STATE OF ILLINOIS  
 DEPARTMENT OF TRANSPORTATION

COUNTY HIGHWAY 11  
 CROSS SECTIONS  
 SCALE: SHEET OF SHEETS STA. 15+00.00 TO STA. 15+00.00

|                           |         |        |              |           |
|---------------------------|---------|--------|--------------|-----------|
| F.A.P. RTE.               | SECTION | COUNTY | TOTAL SHEETS | SHEET NO. |
| 317                       | (18)I   | FULTON | 47           | 43        |
| CONTRACT NO. 68A25        |         |        |              |           |
| ILLINOIS FED. AID PROJECT |         |        |              |           |