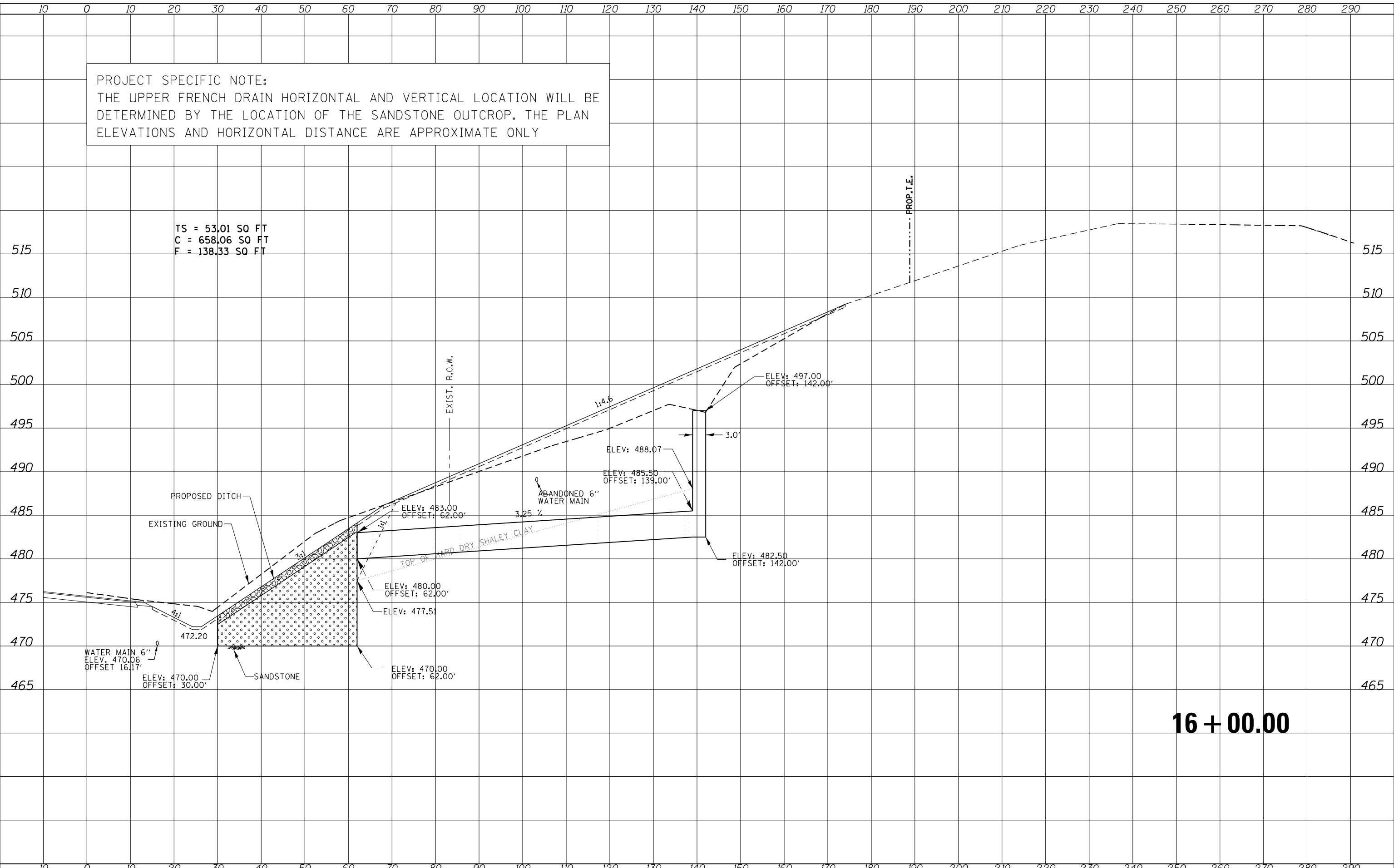


PROJECT SPECIFIC NOTE:  
 THE UPPER FRENCH DRAIN HORIZONTAL AND VERTICAL LOCATION WILL BE DETERMINED BY THE LOCATION OF THE SANDSTONE OUTCROP. THE PLAN ELEVATIONS AND HORIZONTAL DISTANCE ARE APPROXIMATE ONLY

TS = 53.01 SO FT  
 C = 658.06 SO FT  
 F = 138.33 SO FT



**16 + 00.00**

DATE	
BY	
FINISHED SURVEY	
PLOTTED	
TEMPLATE	
AREAS	
CHECKED	
NO.	

DATE	
BY	
ORIGINAL SURVEY	
PLOTTED	
TEMPLATE	
AREAS	
CHECKED	
NO.	

FILE NAME = US24DuncMillsSlide REVISED SHEET FILE .dgn

USER NAME = aubreys  
 PLOT SCALE = 20.000' / in.  
 PLOT DATE = 3/21/2013

DESIGNED -	REVISED -
DRAWN -	REVISED -
CHECKED -	REVISED -
DATE -	REVISED -

**STATE OF ILLINOIS  
 DEPARTMENT OF TRANSPORTATION**

**COUNTY HIGHWAY 11  
 CROSS SECTIONS**  
 SCALE: SHEET OF SHEETS STA. 16+00.00 TO STA. 16+00.00

F.A.P. RTE.	SECTION	COUNTY	TOTAL SHEETS	SHEET NO.
317	(18)I	FULTON	47	45
CONTRACT NO. 68A25				
ILLINOIS FED. AID PROJECT				