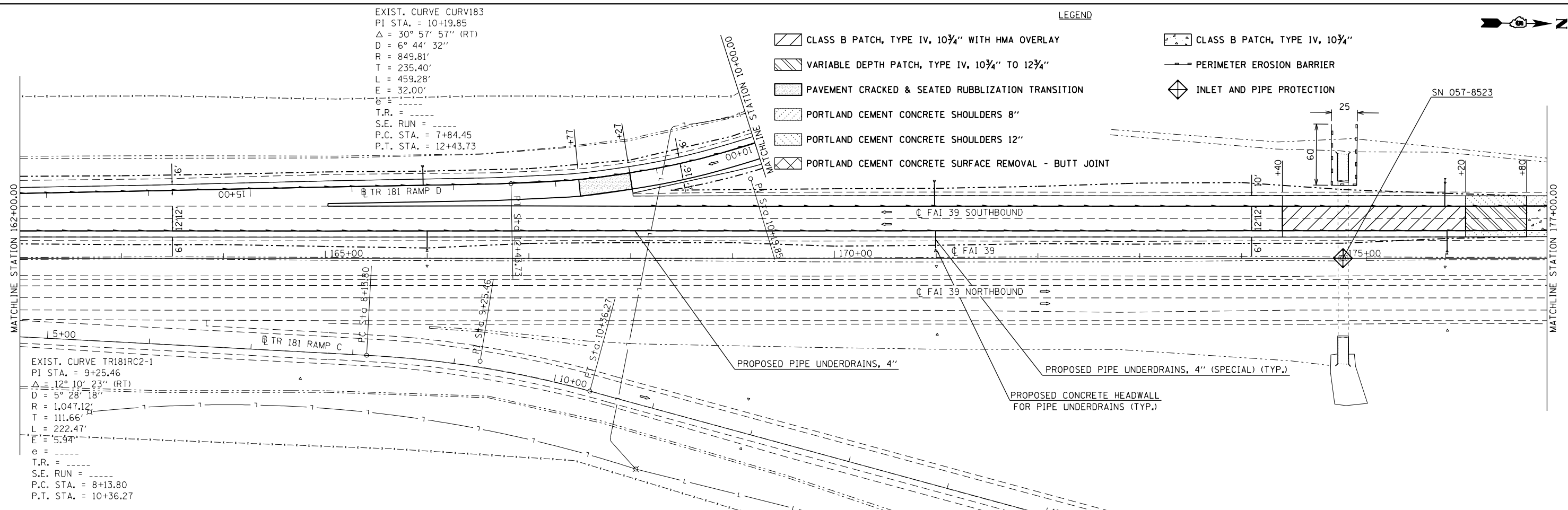


EXIST. CURVE CURV183
 PI STA. = 10+19.85
 $\Delta = 30^\circ 57' 57''$ (RT)
 $D = 6^\circ 44' 32''$
 $R = 849.81'$
 $T = 235.40'$
 $L = 459.28'$
 $E = 32.00'$
 $T.R. =$
 $S.E. RUN =$
 $P.C. STA. = 7+84.45$
 $P.T. STA. = 12+43.73$

LEGEND

- CLASS B PATCH, TYPE IV, 10 3/4" WITH HMA OVERLAY
- VARIABLE DEPTH PATCH, TYPE IV, 10 3/4" TO 12 3/4"
- PAVEMENT CRACKED & SEATED RUBBLIZATION TRANSITION
- PORTLAND CEMENT CONCRETE SHOULDERS 8"
- PORTLAND CEMENT CONCRETE SHOULDERS 12"
- PORTLAND CEMENT CONCRETE SURFACE REMOVAL - BUTT JOINT

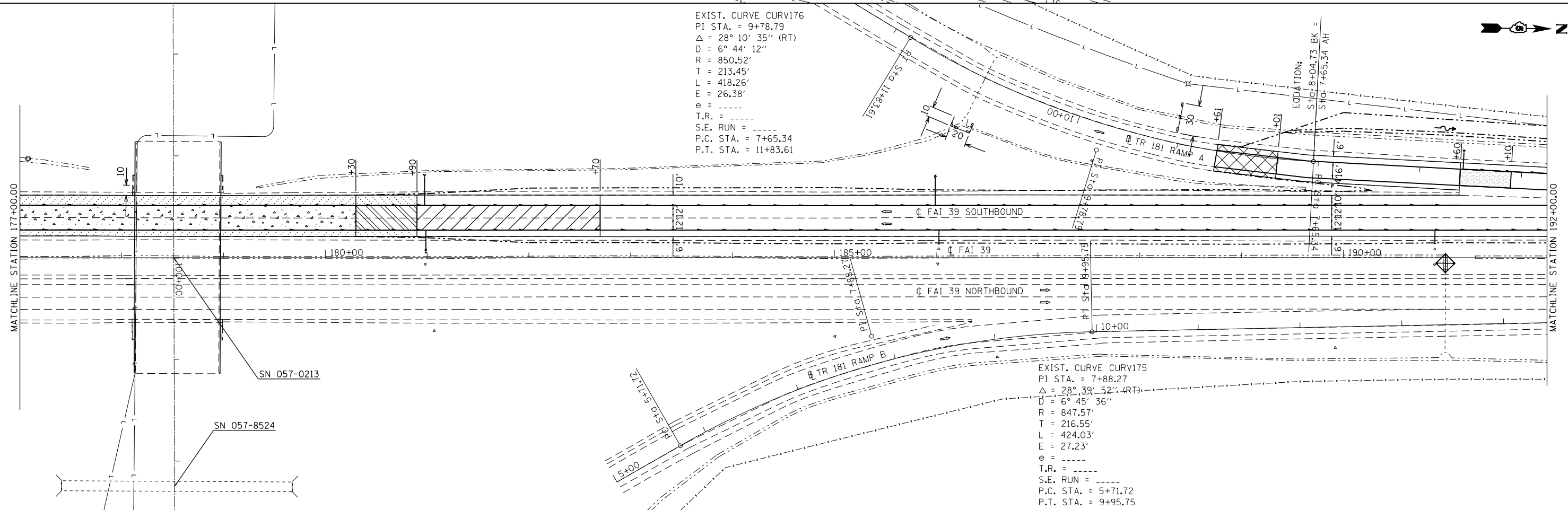
- CLASS B PATCH, TYPE IV, 10 3/4"
- PERIMETER EROSION BARRIER
- INLET AND PIPE PROTECTION



EXIST. CURVE TR181RC2-1
 PI STA. = 9+25.46
 $\Delta = 12^\circ 10' 23''$ (RT)
 $D = 5^\circ 28' 18''$
 $R = 1,047.12'$
 $T = 111.66'$
 $L = 222.47'$
 $E = 5.94'$
 $e =$
 $T.R. =$
 $S.E. RUN =$
 $P.C. STA. = 8+13.80$
 $P.T. STA. = 10+36.27$

EXIST. CURVE CURV176
 PI STA. = 9+78.79
 $\Delta = 28^\circ 10' 35''$ (RT)
 $D = 6^\circ 44' 12''$
 $R = 850.52'$
 $T = 213.45'$
 $L = 418.26'$
 $E = 26.38'$
 $e =$
 $T.R. =$
 $S.E. RUN =$
 $P.C. STA. = 7+65.34$
 $P.T. STA. = 11+83.61$

EXIST. CURVE CURV175
 PI STA. = 7+88.27
 $\Delta = 28^\circ 39' 52''$ (RT)
 $D = 6^\circ 45' 36''$
 $R = 847.57'$
 $T = 216.55'$
 $L = 424.03'$
 $E = 27.23'$
 $e =$
 $T.R. =$
 $S.E. RUN =$
 $P.C. STA. = 5+71.72$
 $P.T. STA. = 9+95.75$



| | | | |
|---|---------------------|------------|--------------------------|
| FILE NAME = | USER NAME = hoganbj | DESIGNED - | REVISED - BJH 03/07/2013 |
| es:\pwork\pwork\hoganbj\d0339150\0570634-shd-dblpln.dgn | | DRAWN - | REVISED - |
| | | CHECKED - | REVISED - |
| | | DATE - | REVISED - |

**STATE OF ILLINOIS
 DEPARTMENT OF TRANSPORTATION**

**I 39
 PLAN SHEET**
 SCALE: SHEET 1 OF 3 SHEETS STA. 162+00 TO STA. 192+00

| F.A.I. RTE. | SECTION | COUNTY | TOTAL SHEETS | SHEET NO. |
|---------------------------|---------------|--------|--------------|-----------|
| 39 | 57(2,3)RS(SB) | McLean | 140 | 33 |
| CONTRACT NO. 70634 | | | | |
| ILLINOIS FED. AID PROJECT | | | | |