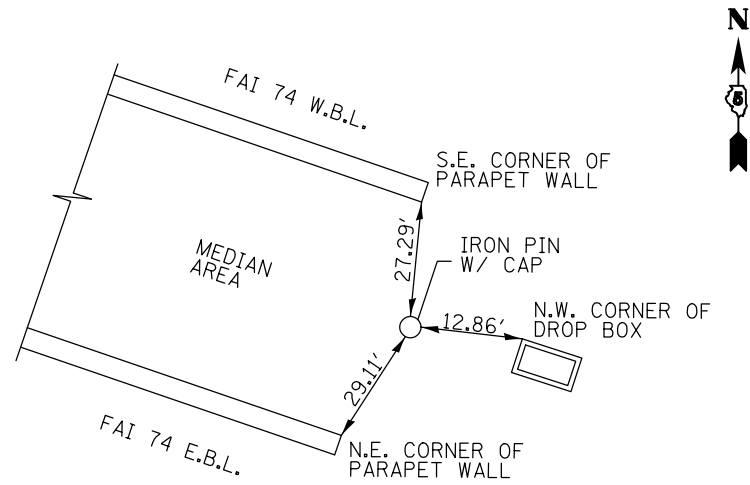
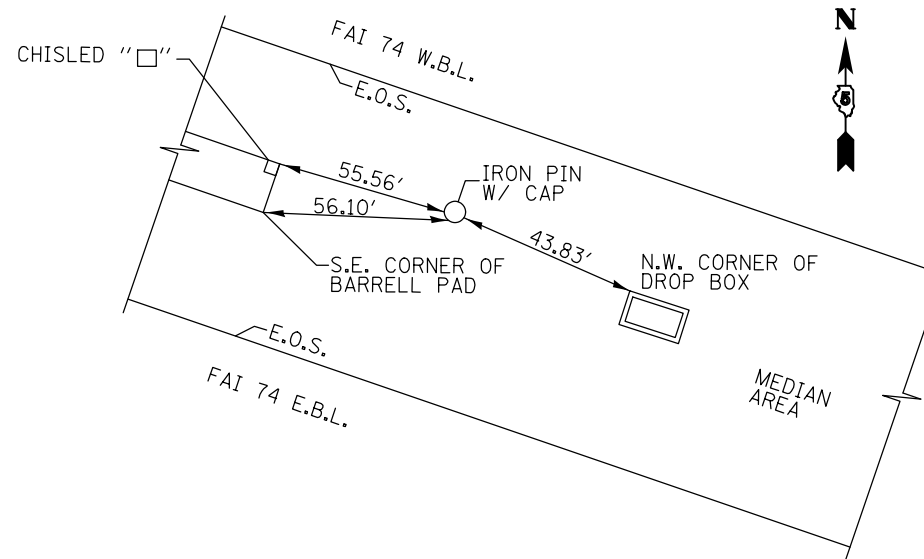


T.S. #473, STA. 1541+93.96, 0.55' LT.



T.S. #472, STA. 1548+84.16, 13.17' LT.



CONTRACT #70700 BENCHMARK TABLE

DESIGNATION	VERTICAL DATUM	CHARACTER OR MARK	DESCRIPTION	ALIGNMENT	STATION	O/S	ELEVATION
4889-2	NAVD 88	TOP OF R.O.W.	LOCATED ON TOP OF R.O.W. MARKER	CH 50	13+10.00	40.0' LT.	722.88
4889-1	NAVD 88	CHISLED SQUARE	LOCATED ON TOP OF S.E. ABUTMENT	CH 50	20+04.70	14.6' RT.	751.56
4889-4	NAVD 88	CHISLED SQUARE	LOCATED ON TOP OF N.E. WINGWALL	CH 50	23+00.00	17.1' RT.	762.92
4881-18	NAVD 88	CHISLED SQUARE	LOCATED ON THE N.E. CORNER OF CONCRETE BARRELL PAD	FAI 74	1548+28.50	7.0' LT.	733.03
4889-3	NAVD 88	SIDEWALK CORNER	LOCATED ON THE NORTHERLY CORNER OF SIDEWALK IN R&S CAMPER SALES LOT	CH 50	28+84.60	116.0' RT.	753.99

CONTRACT #70700 TRAVERSE STATIONS TABLE

T.S.	ALIGNMENT	STATION	O/S	NORTHING	EASTING
498	N/A	N/A	N/A	1283390.0087	967745.2917
499	CH 50	10+01.13	-18.6188	1283810.0000	967972.0150
500	CH 50	13+71.33	-18.6561	1284109.1020	968194.2530
501	CH 50	19+90.20	-18.0811	1284553.4950	968626.4140
502	CH 50	23+24.94	-18.8599	1284733.5720	968914.9300
503	CH 50	28+01.07	-17.0560	1284770.5810	969392.8110
504	CH 50	32+19.03	15.4920	1284793.0710	969808.8970
523	CH 50	33+98.00	14.0700	1284868.5690	969972.0730
505	CH 50	37+23.42	19.7115	1284999.7480	970269.9330
473	FAI 74	1541+93.96	-0.5459	1284940.8680	968242.4090
472	FAI 74	1548-84.16	-13.1798	1284596.2920	968834.6520

NOTE: ALL COORDINATES SHOWN IN THIS TABLE ARE GRID COORDINATES

CH 50 ALIGNMENT DATA

POINT	DESCRIPTION	ALIGNMENT	STATION	NORTHING	EASTING
171	P.O.T.	CH 50	7+61.96	1283600.0933	967855.8856
188	P.I. (MAG SET)	CH 50	12+66.17	1284021.0100	968133.4785
189	P.I. (NOTHING SET)	CH 50	23+04.98	1284766.4060	968858.3641
190	P.I. (I.P. W/CAP)	CH 50	30+83.08	1284746.7323	969674.3313
178	P.O.T.	CH 50	38+00.09	1285049.7591	970331.2958

NOTE: ALL COORDINATES SHOWN IN THIS TABLE ARE GRID COORDINATES

FAI 74 ALIGNMENT DATA

POINT	DESCRIPTION	ALIGNMENT	STATION	NORTHING	EASTING
138	P.O.T.	FAI 74	1395+00.14	1290165.449	954798.6177
-	P.I.	FAI 74	1474+69.62	1288679.959	962628.4314
103	P.O.T.	FAI 74	1500+98.97	1287210.782	964832.9178
136	P.O.T.	FAI 74	1543+39.70	1284859.637	968363.4014
STATION EQUATION: 1543+39.70 (BK) = 1543+43.52 (AH)					
-	P.I.	FAI 74	1551+12.40	1284433.456	969003.3547
137	P.O.T.	FAI 74	1573+24.16	1283807.722	971136.9821

NOTE: ALL COORDINATES SHOWN IN THIS TABLE ARE GRID COORDINATES