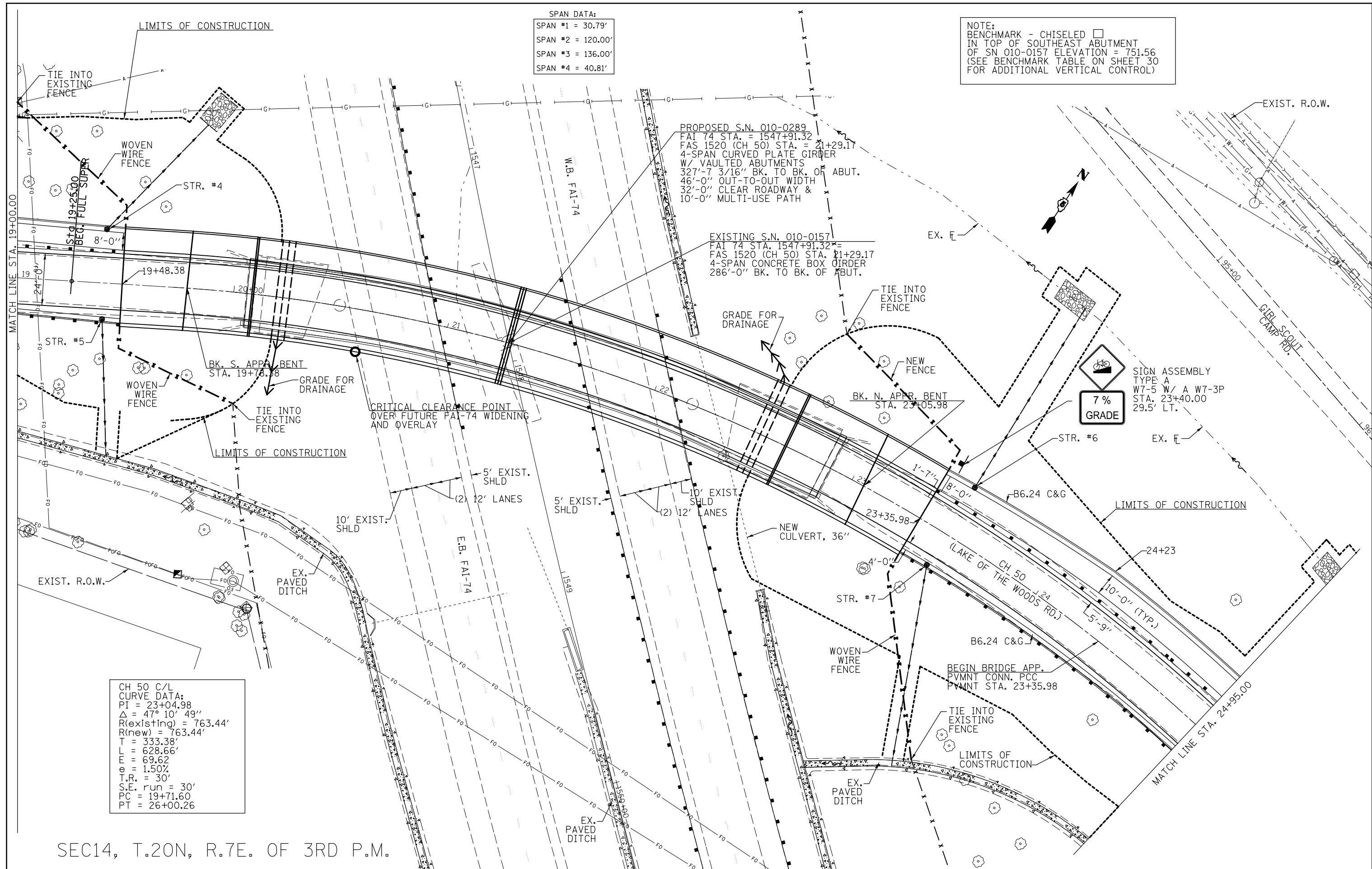


SPAN DATA:
 SPAN #1 = 30.79'
 SPAN #2 = 120.00'
 SPAN #3 = 136.00'
 SPAN #4 = 40.81'

NOTE:
 BENCHMARK - CHISELED \square
 IN TOP OF SOUTHEAST ABUTMENT
 OF SN 010-0157 ELEVATION = 751.56
 (SEE BENCHMARK TABLE ON SHEET 30
 FOR ADDITIONAL VERTICAL CONTROL)



CH 50 C/L
 CURVE DATA:
 PI = 23+04.98
 $\Delta = 47^\circ 10' 49''$
 R(existing) = 763.44'
 R(new) = 763.44'
 T = 333.38'
 L = 628.66'
 E = 69.62'
 $e = 1.50\%$
 T.R. = 30'
 S.E. run = 30'
 PC = 19+71.60
 PT = 26+00.26

SEC14, T.20N, R.7E. OF 3RD P.M.

FILE NAME =	USER NAME = ceorlockbm	DESIGNED BMC	REVISED -	STATE OF ILLINOIS DEPARTMENT OF TRANSPORTATION	PLAN SHEET CH 50 - LAKE OF THE WOODS RD.	F.A.I. RT. =	SECTION	COUNTY	TOTAL SHEETS	SHEET NO.
ce:\pw\work\p\dtdot\ceorlockbm\d0208368\0570700-sht-plnprf\Revised Profile.dgn	DRAWN BMC	REVISED -	74			10-4BR	CHAMPAIGN	290	38	
PLOT SCALE = 40.0000' / in.	CHECKED -	REVISED -	CONTRACT NO. 70700							
PLOT DATE = 11/9/2012	DATE 04-25-12	REVISED -	ILLINOIS FED. AID PROJECT							