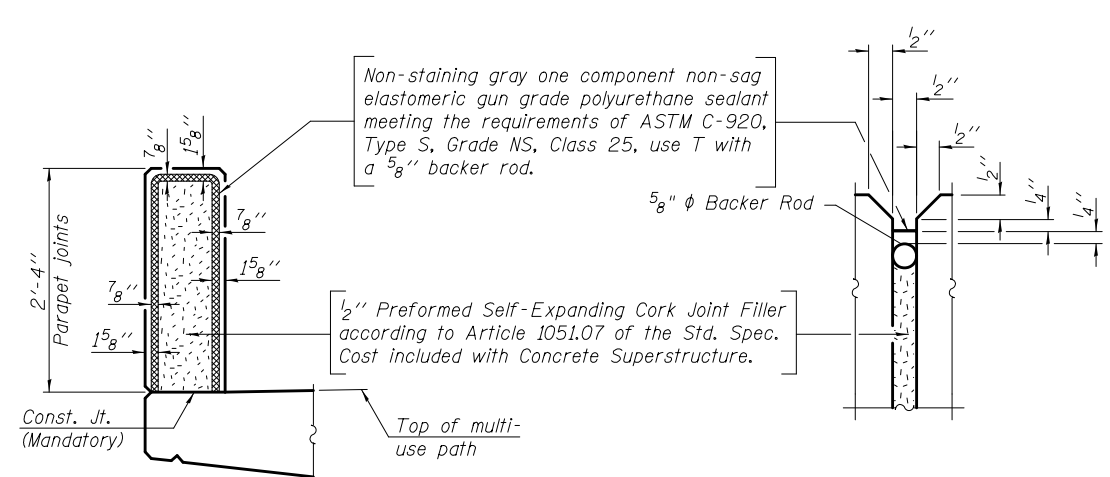


**ROADWAY PARAPET JOINT DETAILS**

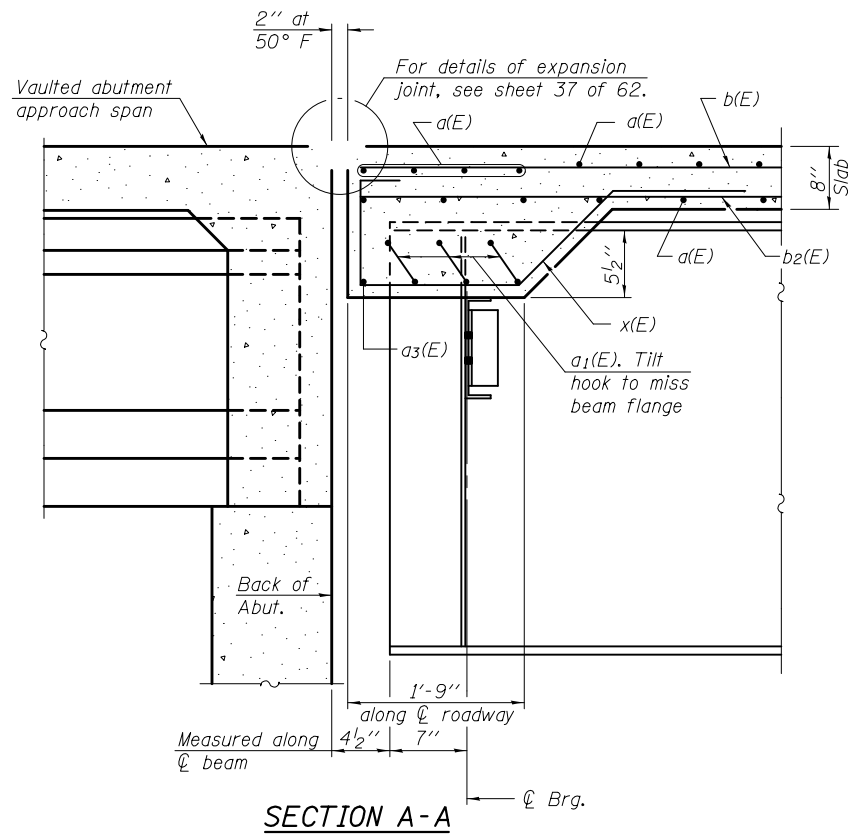
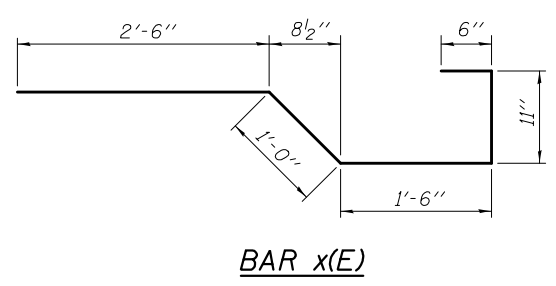
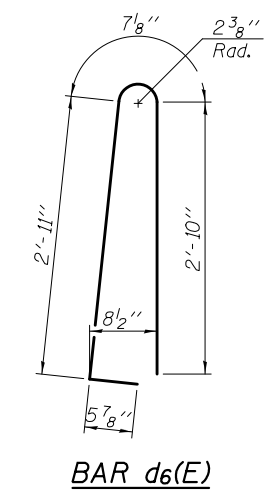
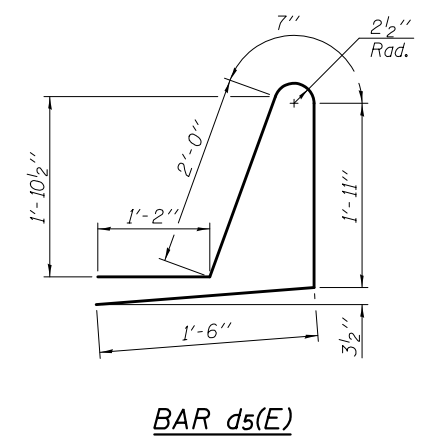
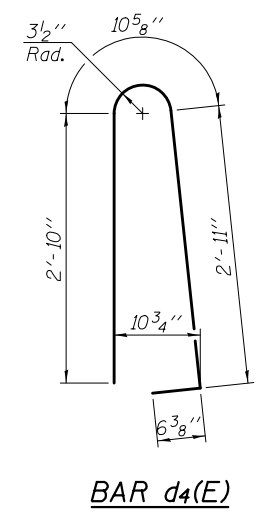
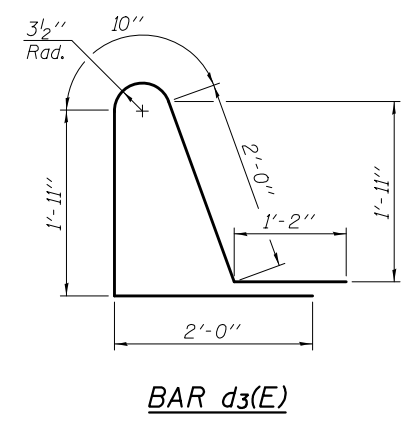
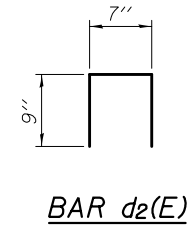
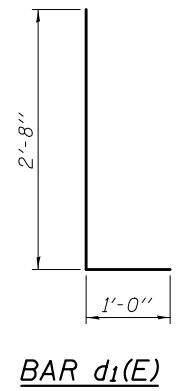
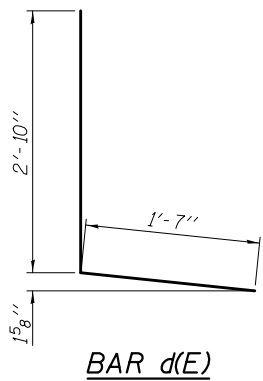
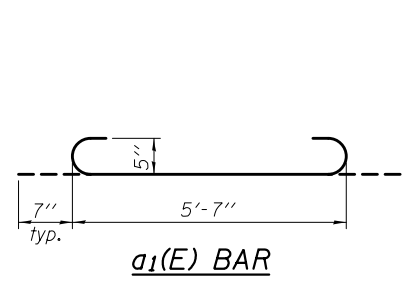


**WEST MULTI-USE PATH PARAPET JOINT DETAILS**

**SUPERSTRUCTURE BILL OF MATERIAL**

Bar	No.	Size	Length	Shape
a(E)	736	#5	45'-7"	—
a <sub>1</sub> (E)	42	#5	6'-9"	⊔
a <sub>2</sub> (E)	842	#6	6'-6"	—
a <sub>3</sub> (E)	2	#5	40'-6"	—
b(E)	480	#5	29'-0"	—
b <sub>1</sub> (E)	92	#6	45'-4"	—
b <sub>2</sub> (E)	369	#5	32'-0"	—
d(E)	267	#4	4'-5"	L
d <sub>1</sub> (E)	267	#6	3'-8"	L
d <sub>2</sub> (E)	122	#4	2'-1"	n
d <sub>3</sub> (E)	287	#5	7'-11"	⌋
d <sub>4</sub> (E)	287	#5	7'-2"	⌋
d <sub>5</sub> (E)	275	#5	7'-2"	⌋
d <sub>6</sub> (E)	275	#5	6'-10"	⌋
e(E)	36	#4	17'-2"	—
e <sub>1</sub> (E)	44	#4	19'-9"	—
e <sub>2</sub> (E)	42	#4	17'-1"	—
e <sub>3</sub> (E)	42	#4	16'-11"	—
e <sub>4</sub> (E)	5	#4	22'-8"	—
e <sub>5</sub> (E)	4	#8	30'-9"	—
e <sub>6</sub> (E)	4	#8	19'-9"	—
e <sub>7</sub> (E)	42	#4	19'-7"	—
e <sub>8</sub> (E)	5	#4	25'-11"	—
e <sub>9</sub> (E)	4	#8	34'-10"	—
e <sub>10</sub> (E)	42	#4	16'-1"	—
e <sub>11</sub> (E)	5	#4	21'-8"	—
e <sub>12</sub> (E)	4	#8	29'-6"	—
e <sub>13</sub> (E)	42	#4	18'-8"	—
e <sub>14</sub> (E)	5	#4	24'-9"	—
e <sub>15</sub> (E)	4	#8	33'-5"	—
x(E)	70	#5	6'-5"	⊔
Reinforcement Bars, Epoxy Coated	Pound		93,490	
Concrete Superstructure	Cu. Yds.		404.6	

Bars indicated thus 1 x 4-#8 etc. indicates 1 line of bars with 4 lengths per line.



**SECTION A-A**

**MINIMUM BAR LAP**  
(Parapet)  
#4 bar = 2'-7"  
#8 bar = 6'-9"