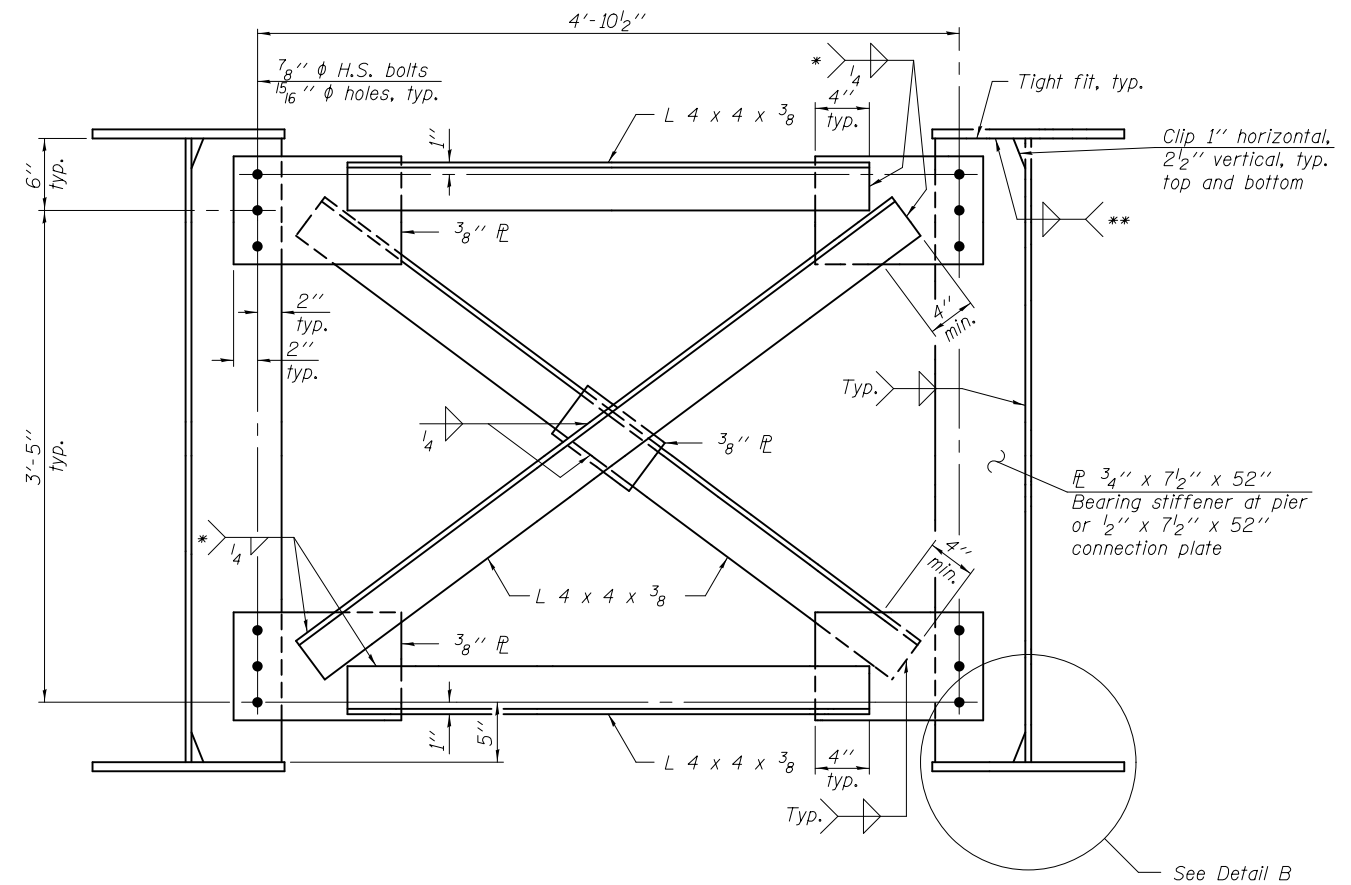


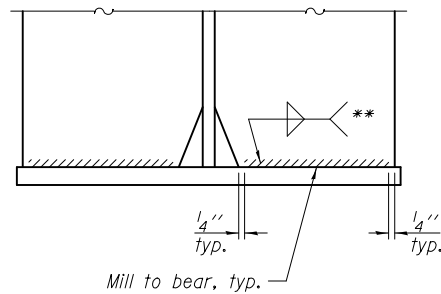
**END CROSS FRAME (CF)**



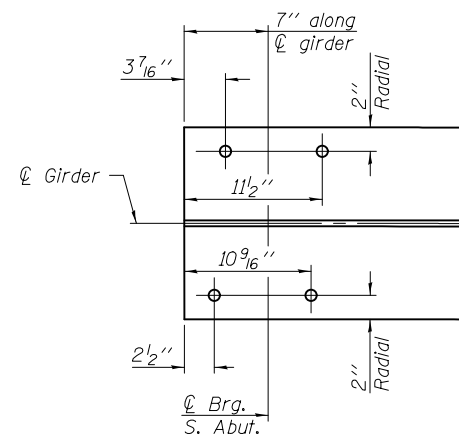
**INTERIOR CROSS FRAME (CF1)**

Notes:  
 All frame members and connection plates shall be NTR.  
 Load carrying components designated "NTR" shall conform to the Impact Testing Requirement, Zone 2.  
 Omit connection plate on exterior face of fascia girders.  
 All cross frames or diaphragms between beams or girders shall be installed with erection pins and bolts in accordance with the erection plan approved by the Engineer. Individual cross frames or diaphragms at supports may be temporarily disconnected to install bearing anchor rods.

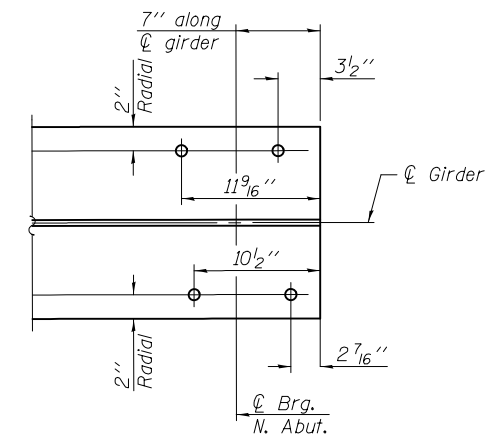
\* Fillet weld angles to gusset plate along 3 sides.  
 \*\* 1/4" weld for flange thickness = 3/4"  
 5/16" weld for flange thickness > 3/4"



**DETAIL B**



**SOUTH END OF GIRDER PLAN**  
 (Showing bottom flange)



**NORTH END OF GIRDER PLAN**  
 (Showing bottom flange)

DESIGNED - DEWEY H. COULTAS	EXAMINED - <i>James F. J. [Signature]</i>	DATE - FEBRUARY 25, 2013
CHECKED - NICHOLAS R. BARNETT	ACTING ENGINEER OF BRIDGE DESIGN	
DRAWN - MICHAEL B. MOSSMAN	PASSED - <i>Carl [Signature]</i>	REVISED
CHECKED - D.H.C. / N.R.B.	ACTING ENGINEER OF BRIDGES AND STRUCTURES	REVISED

**STATE OF ILLINOIS  
 DEPARTMENT OF TRANSPORTATION**

**STRUCTURAL STEEL DETAILS  
 STRUCTURE NO. 010 - 0289**

SHEET NO. 41 OF 62 SHEETS

F.A.I. RTE.	SECTION	COUNTY	TOTAL SHEETS	SHEET NO.
74	10-4BR	CHAMPAIGN	290	126
				CONTRACT NO. 70700

ILLINOIS FED. AID PROJECT