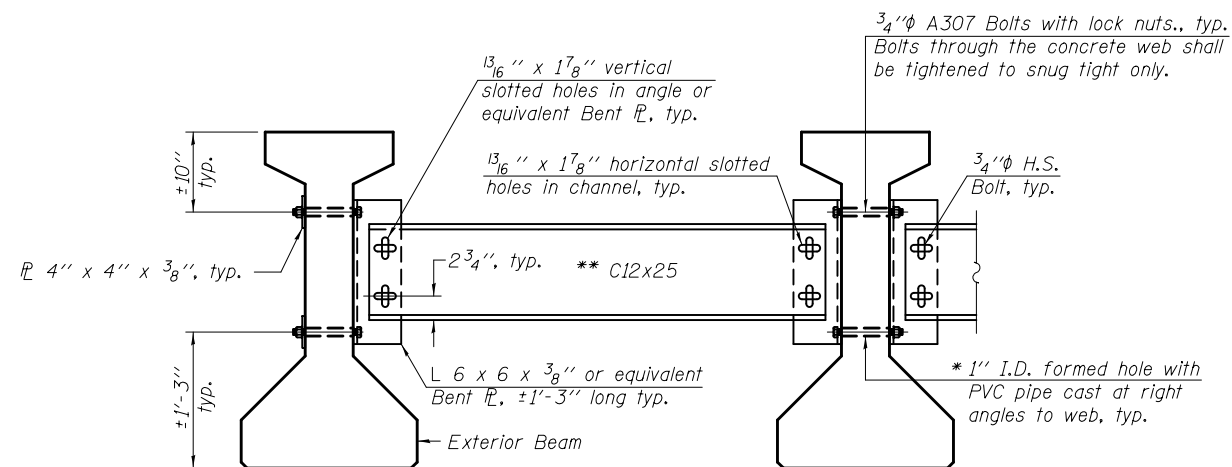


**NOTES**

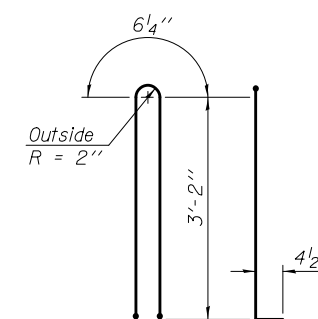
Inserts for 3/4" φ threaded dowel rods, when specified, are to be two strut, ferrule type for interior beams and single ferrule, flared loop type for exterior beams. Prestressing steel shall be uncoated high strength, low relaxation 7-wire strand, Grade 270. The nominal diameter shall be 1/2" and the nominal cross-sectional area shall be 0.153 sq. in. A minimum 2 1/2" φ lifting pin shall be used to engage the lifting loops during handling. The top and bottom plates shall be AASHTO M270 Grade 50. The bottom plates shall be galvanized according to AASHTO M111. Top plates and threaded rods need not be galvanized. Threaded rods shall be ASTM F 1554 Grade 55.



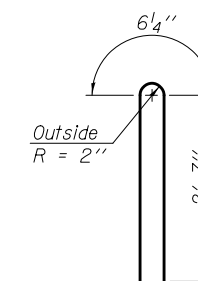
**Notes:**

All material for bracing shall be hot dip galvanized according to AASHTO M111 unless otherwise noted. Two hardened washers are required for each set of oversized holes. All holes shall be 15/16" φ unless otherwise noted. 5/16" x 3" x 3" plate washers are required over all slotted holes. All bolts shall be galvanized according to AASHTO M232. Bracing shall be installed as beams are erected and tightened as soon as possible during erection. Permanent bracing shall not be paid for separately, but shall be included in the cost of Furnishing and Erecting Precast Prestressed Concrete I-Beams.

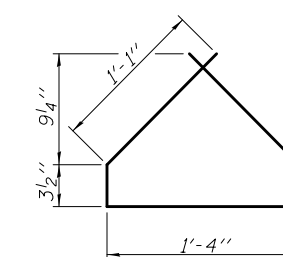
\* Fabricator shall locate to miss strands within permissible tolerances.  
 \*\* Alternate C12x30 channels are permitted to facilitate material acquisition.



**BAR G1**

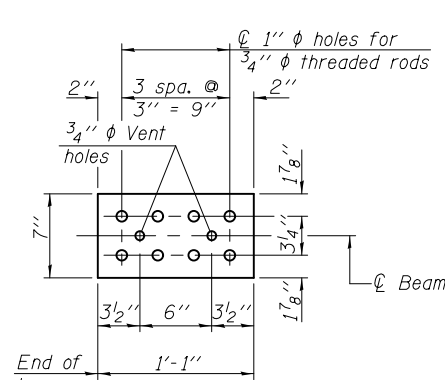


**BAR G2**

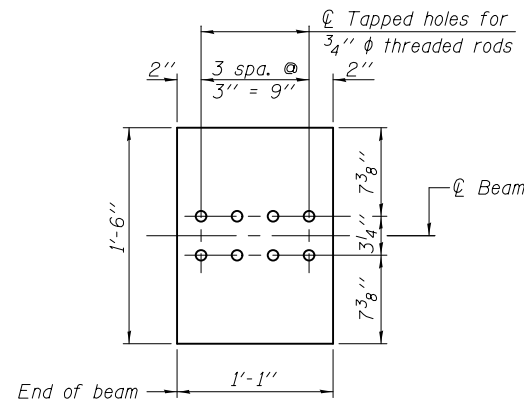


**BAR G4**

**PERMANENT BRACING DETAILS FOR 36" AND 42" PPC I-BEAMS**

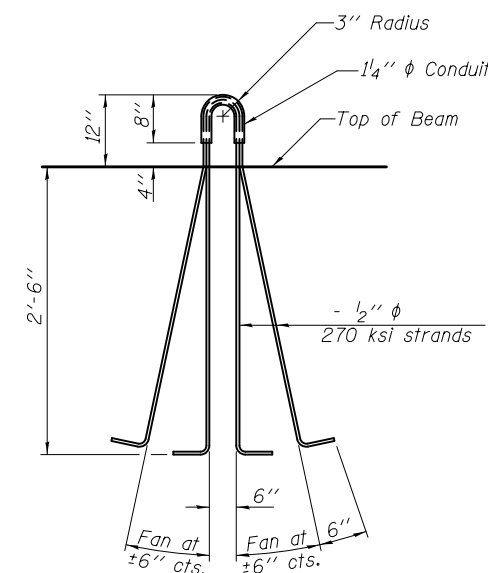


**TOP PLATE**



**BOTTOM PLATE**

See bearing details for pintle hole locations when required.



**LIFTING LOOP DETAIL**

**BILL OF MATERIAL**

Item	Unit	Total
Furnishing and Erecting Precast Prestressed Concrete I-Beams, 36"	Ft.	337

DESIGNED - NICHOLAS R. BARNETT	EXAMINED - <i>Jaime F. Schuff</i> ACTING ENGINEER OF BRIDGE DESIGN	DATE - FEBRUARY 25, 2013
CHECKED - DEWEY H. COULTAS	PASSED - <i>Carl Kasper</i> ACTING ENGINEER OF BRIDGES AND STRUCTURES	REVISED
DRAWN - MICHAEL B. MOSSMAN		REVISED
CHECKED - D.H.C. / N.R.B.		

**STATE OF ILLINOIS  
DEPARTMENT OF TRANSPORTATION**

**36" PPC I-BEAM DETAILS  
STRUCTURE NO. 010 - 0289**

SHEET NO. 45 OF 62 SHEETS

F.A.I. RTE.	SECTION	COUNTY	TOTAL SHEETS	SHEET NO.
74	10-4BR	CHAMPAIGN	290	130
CONTRACT NO. 70700			ILLINOIS FED. AID PROJECT	