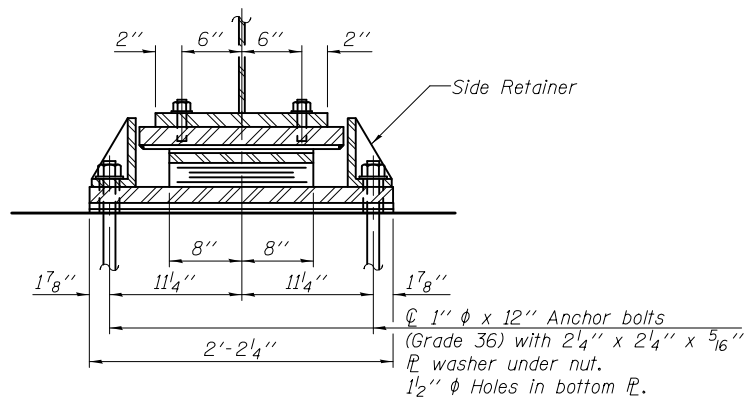
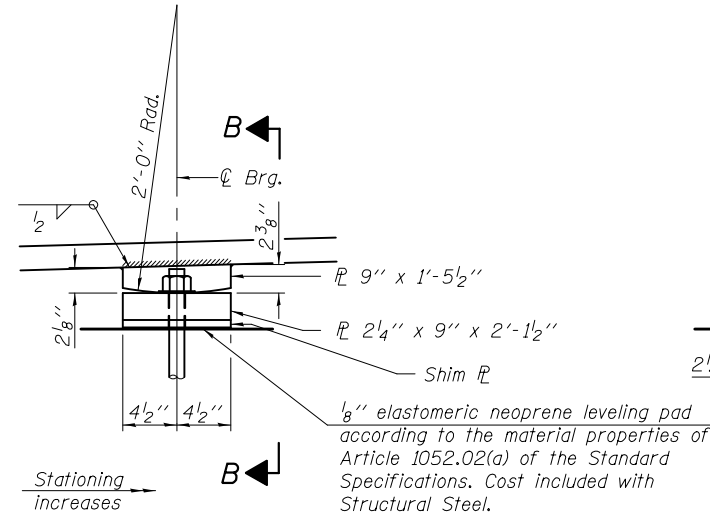


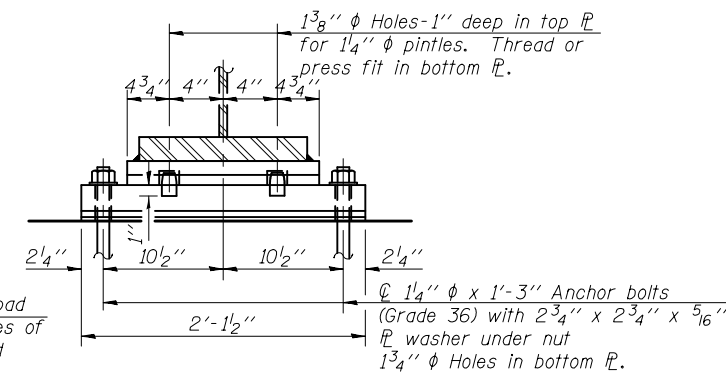
**ELEVATION AT ABUT.**



**SECTION A-A**



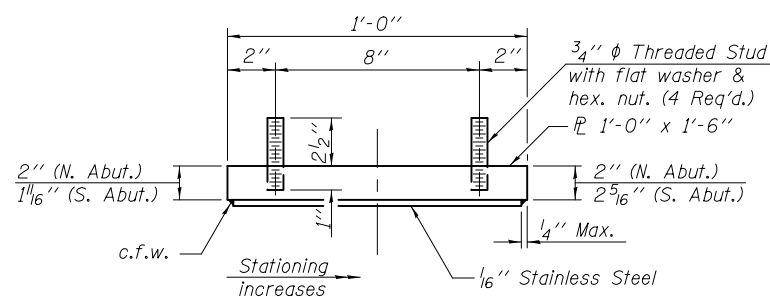
**ELEVATION AT PIER**



**SECTION B-B**

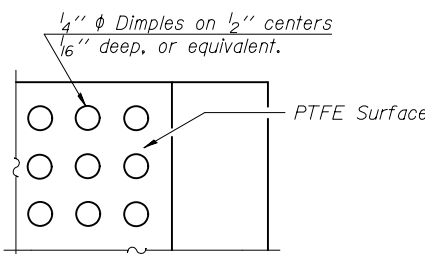
**TYPE II ELASTOMERIC EXP. BRG.**

**FIXED BEARING**

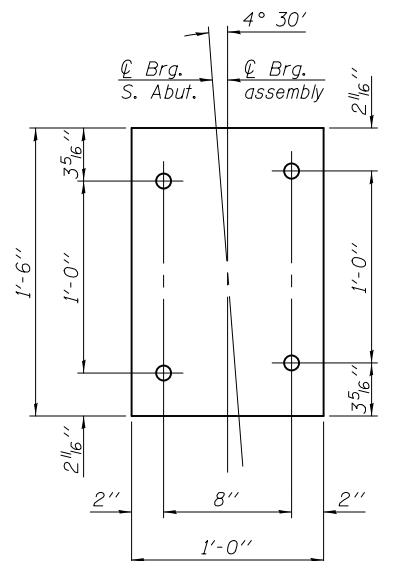


**TOP BEARING ASSEMBLY**

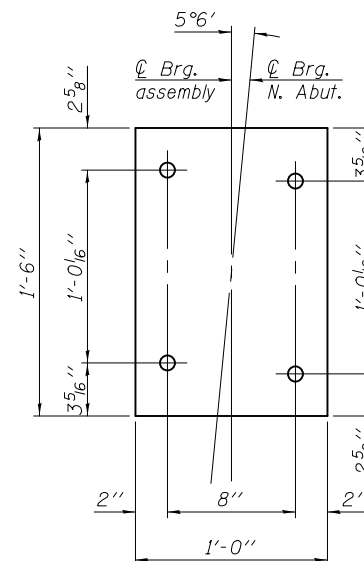
See Bearing Plate Plan views for additional information.



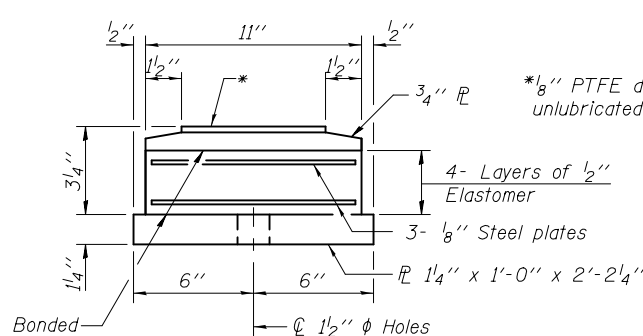
**PLAN-PTFE SURFACE**



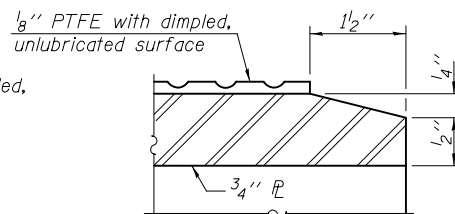
**SOUTH ABUTMENT TOP BEARING PLATE PLAN**



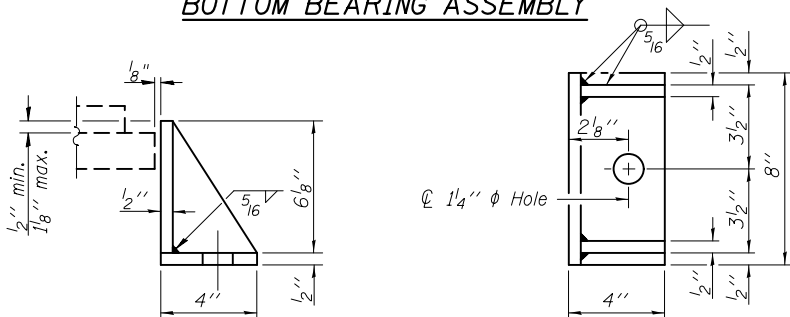
**NORTH ABUTMENT TOP BEARING PLATE PLAN**



**BOTTOM BEARING ASSEMBLY**

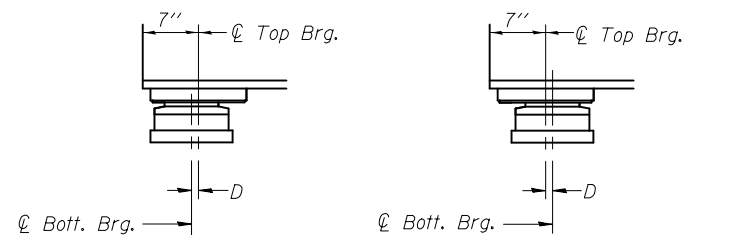


**SECTION THRU PTFE**



**SIDE RETAINER**

Equivalent rolled angle with stiffeners will be allowed in lieu of welded plates.



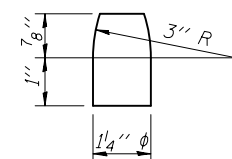
**BELOW 50°F.**

**ABOVE 50°F.**

(Move bott. brg. away from fixed brg.) (Move bott. brg. toward fixed brg.)

**SETTING ANCHOR BOLTS AT EXP. BRG.**

D = 1/8" per each 100' of expansion for every 15° temp. change from the normal temp. of 50°F.



**PINTLE**

**SHIM PLATE THICKNESS**

	S. Abut.	Pier	N. Abut.
Girder 1	-	1/8"	-
Girder 2	1/2"	5/8"	5/8"

**BILL OF MATERIAL**

Item	Unit	Total
Elastomeric Bearing Assembly Type II	Each	16
Anchor Bolts, 1"	Each	32
Anchor Bolts, 1 1/4"	Each	16

DESIGNED - DEWEY H. COULTAS  
 CHECKED - NICHOLAS R. BARNETT  
 DRAWN - MICHAEL B. MOSSMAN  
 CHECKED - D.H.C. / N.R.B.

EXAMINED - *Jaime F. Joffe*  
 ACTING ENGINEER OF BRIDGE DESIGN  
 PASSED - *Carl Perry*  
 ACTING ENGINEER OF BRIDGES AND STRUCTURES

DATE - FEBRUARY 25, 2013  
 REVISED  
 REVISED

STATE OF ILLINOIS  
 DEPARTMENT OF TRANSPORTATION

BEARING DETAILS  
 STRUCTURE NO. 010 - 0289

SHEET NO. 46 OF 62 SHEETS

F.A.I. RTE.	SECTION	COUNTY	TOTAL SHEETS	SHEET NO.
74	10-4BR	CHAMPAIGN	290	131

CONTRACT NO. 70700  
 ILLINOIS FED. AID PROJECT