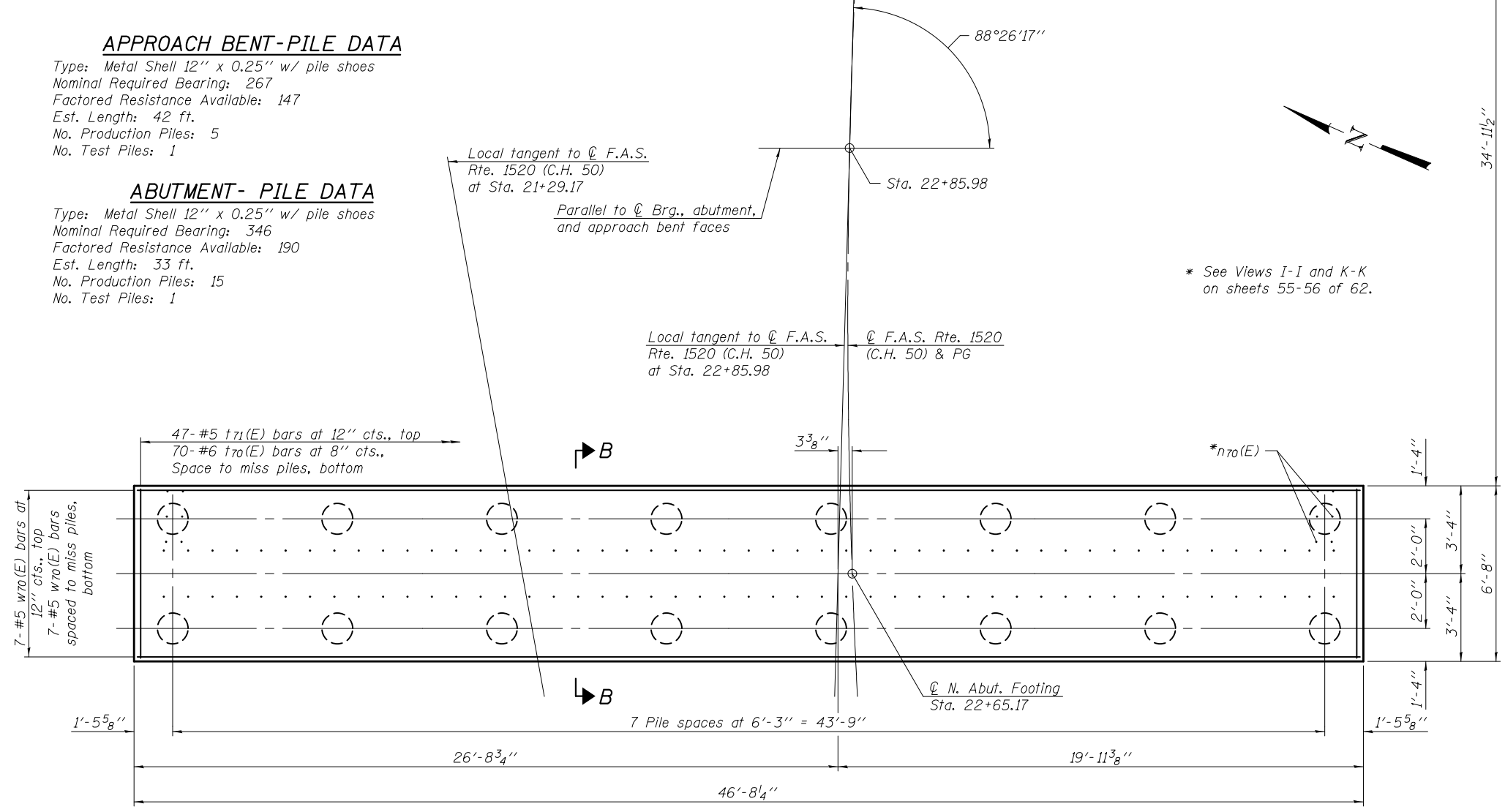


APPROACH BENT-PILE DATA

Type: Metal Shell 12" x 0.25" w/ pile shoes
 Nominal Required Bearing: 267
 Factored Resistance Available: 147
 Est. Length: 42 ft.
 No. Production Piles: 5
 No. Test Piles: 1

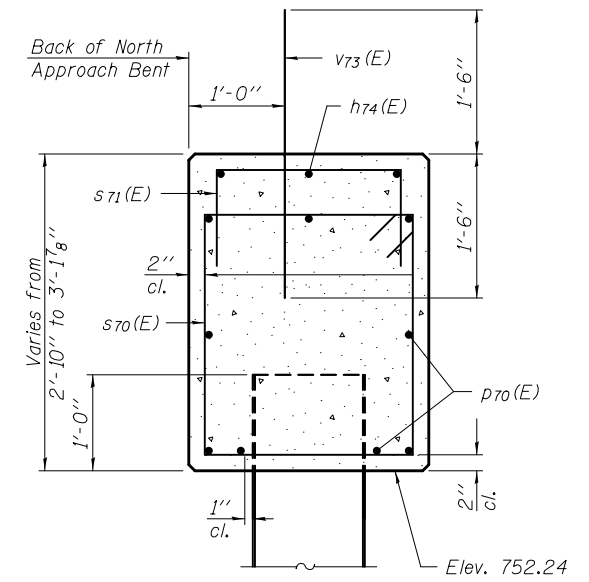
ABUTMENT- PILE DATA

Type: Metal Shell 12" x 0.25" w/ pile shoes
 Nominal Required Bearing: 346
 Factored Resistance Available: 190
 Est. Length: 33 ft.
 No. Production Piles: 15
 No. Test Piles: 1

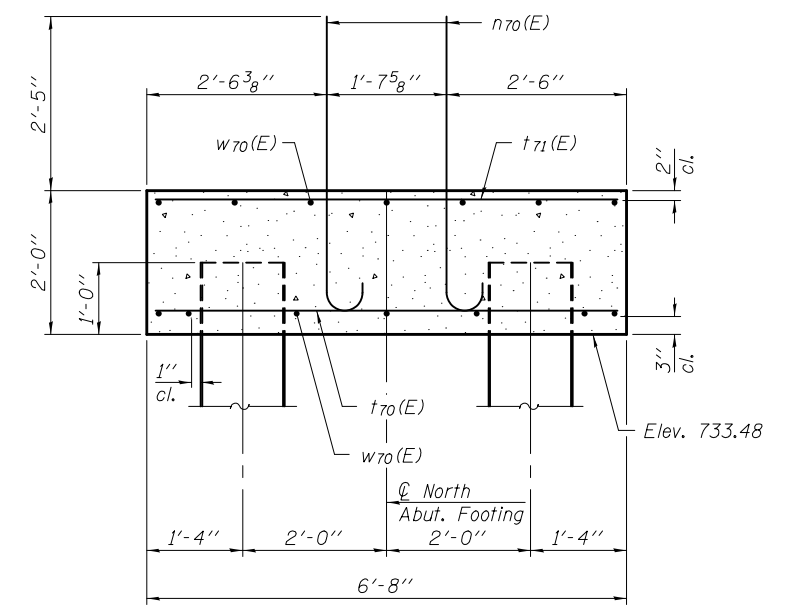


FOOTING PLAN

Notes:
 Space reinforcement in cap to miss anchor bolts.
 Pour steps monolithically with cap.
 For details of piles, see sheet 58 of 62.
 For details of reinforcement and Bill of Material, see sheet 56 of 62.
 The abutments shall have all exposed surfaces of backwalls, bridge seats, front and side faces, and curtain walls treated with Concrete Sealer.
 See sheet 3 of 62 for offsets to local tangent at Sta. 21+29.17.



SECTION A-A



SECTION B-B

* See Views I-I and K-K on sheets 55-56 of 62.

DESIGNED - NICHOLAS R. BARNETT	EXAMINED - <i>James F. J...</i>	DATE - FEBRUARY 25, 2013
CHECKED - DEWEY H. COULTAS	PASSED - <i>Carl...</i>	REVISIONS
DRAWN - MICHAEL B. MOSSMAN		
CHECKED - D.H.C. / N.R.B.		

**STATE OF ILLINOIS
 DEPARTMENT OF TRANSPORTATION**

**NORTH ABUTMENT
 STRUCTURE NO. 010 - 0289**

F.A.I. RTE.	SECTION	COUNTY	TOTAL SHEETS	SHEET NO.
74	10-4BR	CHAMPAIGN	290	137
CONTRACT NO. 70700				

SHEET NO. 52 OF 62 SHEETS

ILLINOIS FED. AID PROJECT