

F.A.S. RTE.	SECTION	COUNTY	TOTAL SHEETS	SHEET NO.
525	(41,48,81)Q	CHAMPAIGN	28	1
		ILLINOIS	CONTRACT NO. 70A15	

**STATE OF ILLINOIS**  
**DEPARTMENT OF TRANSPORTATION**  
**DIVISION OF HIGHWAYS**

**PROPOSED**  
**HIGHWAY PLANS**

**FAS ROUTE 525 (BROADLANDS RD.)**  
**SECTION (41,48,81)Q**  
**PROJECT RS-0525(205)**  
**RESURFACING & SEAL COAT**  
**CHAMPAIGN COUNTY**

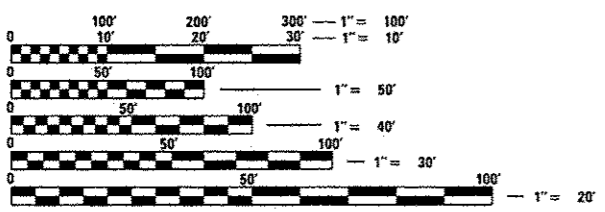
C-95-002-13

LONGVIEW ROAD TO ILLINOIS 49

FOR INDEX OF SHEETS, SEE SHEET NO. 2  
 FOR SUMMARY OF QUANTITIES, SEE SHEETS NO. 4 & 5

**DESIGN DESIGNATION**  
 MAJOR COLLECTOR

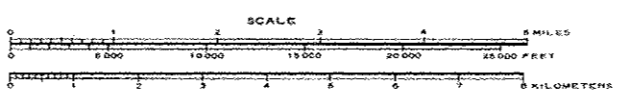
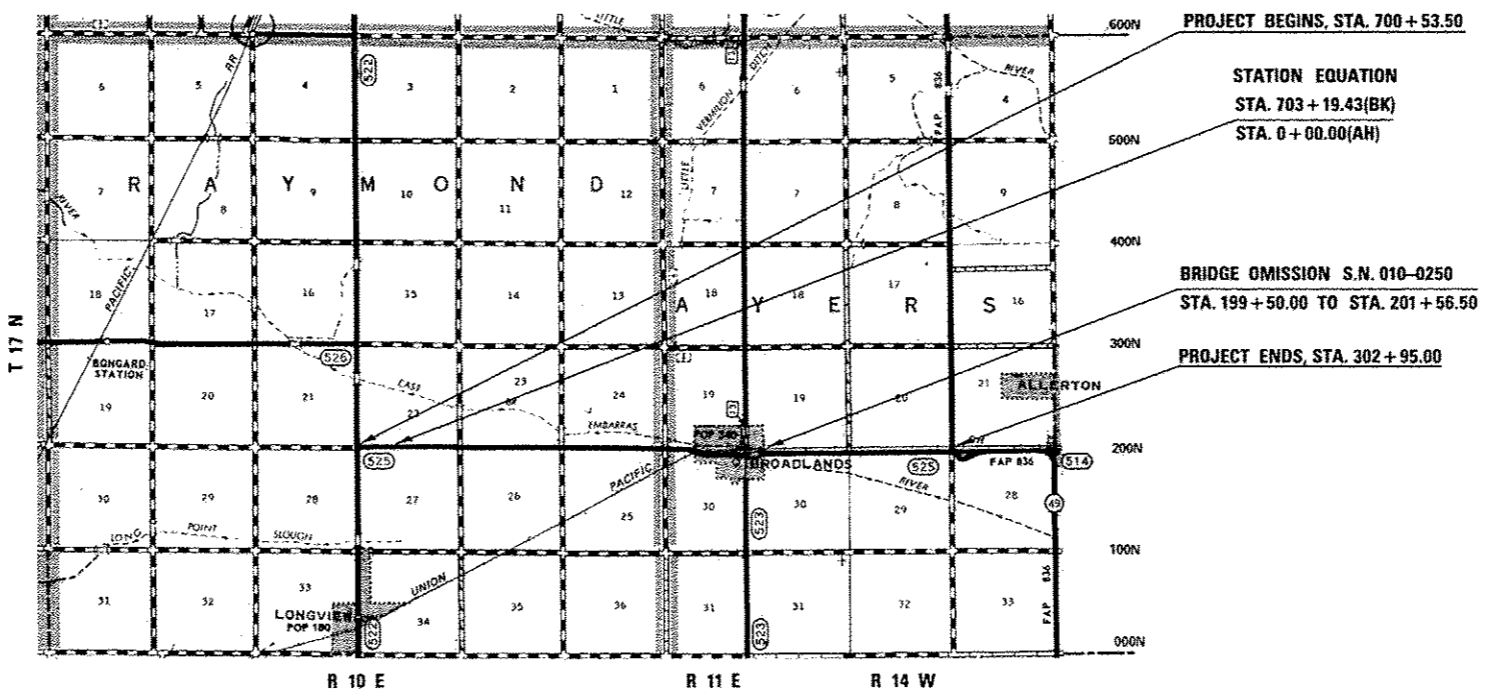
**CURRENT TRAFFIC DATA**  
 750 (2013)



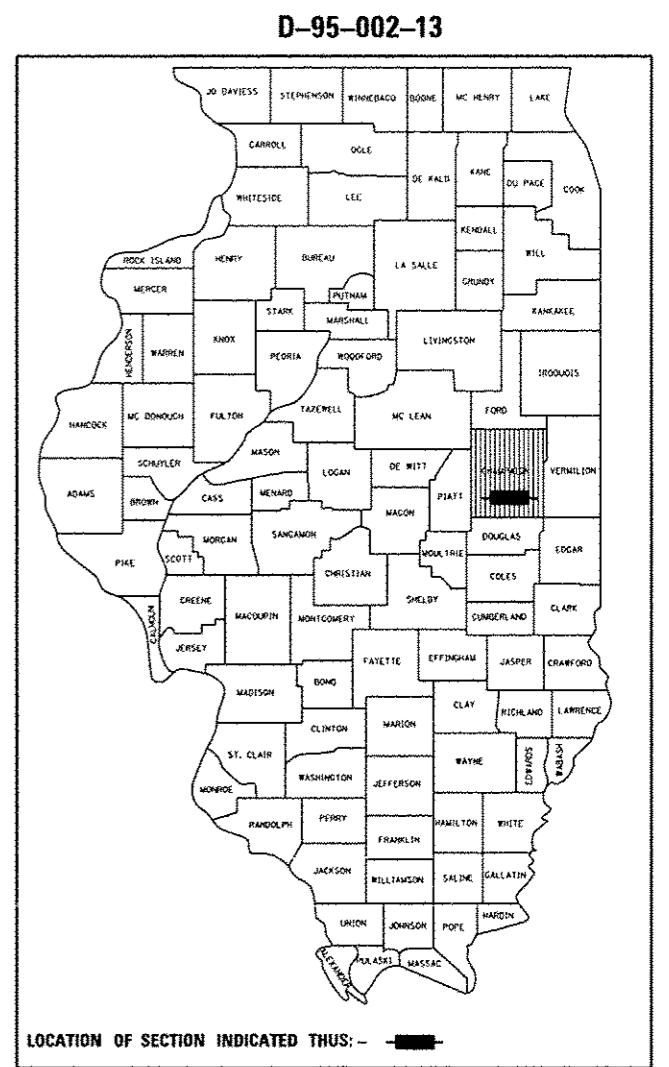
FULL SIZE PLANS HAVE BEEN PREPARED USING STANDARD ENGINEERING SCALES. REDUCED SIZED PLANS WILL NOT CONFORM TO STANDARD SCALES. IN MAKING MEASUREMENTS ON REDUCED PLANS, THE ABOVE SCALES MAY BE USED.

J.U.L.I.E.  
 JOINT UTILITY LOCATION INFORMATION FOR EXCAVATION  
 1-800-892-0123  
 OR 811 RAYMOND & AYERS TOWNSHIP

**PROJECT ENGINEER: NANCY FASIG (217-465-4181)**  
**DESIGN SQUAD LEADER: BRENT CEARLOCK**  
**DESIGNER: BRIGHT AVUSUGLO**  
**CONTRACT NO. 70A15**



GROSS LENGTH = 30,560.93 FT. = 5.79 MILES  
 NET LENGTH = 30,354.43 FT. = 5.75 MILES



STATE OF ILLINOIS  
 DEPARTMENT OF TRANSPORTATION  
 DIVISION OF HIGHWAYS

SUBMITTED MARCH 22, 2013  
Joseph E. Crowe  
 DEPUTY DIRECTOR OF HIGHWAYS, REGION ENGINEER *and*  
April 26, 2013  
John D. Baranzelli, P.E.  
 ENGINEER OF DESIGN AND ENVIRONMENT  
April 26, 2013  
Omer Osman, P.E.  
 DIRECTOR OF HIGHWAYS, CHIEF ENGINEER

**PRINTED BY THE AUTHORITY**  
**OF THE STATE OF ILLINOIS**