

| F.A.I. RTE. | SECTION | COUNTY | TOTAL SHEETS | SHEET NO. |
|-------------|-----------------------|----------|--------------------|-----------|
| 55 | D6 LOGAN CO BR 2011-1 | LOGAN | 429 | 1 |
| | | ILLINOIS | CONTRACT NO. 72E11 | |

+2

D-96-032-11

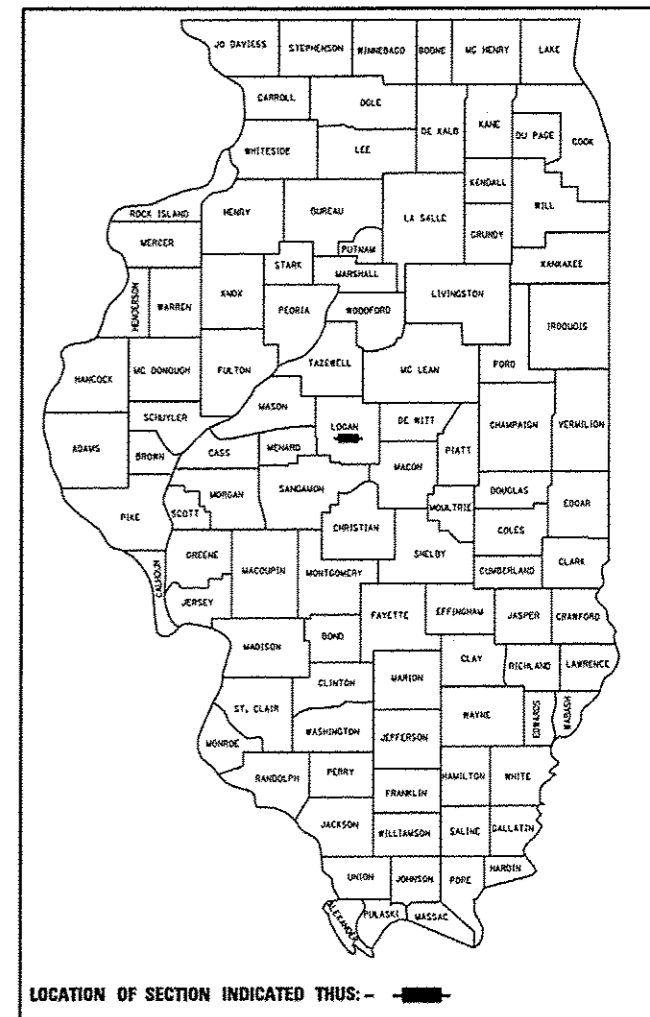
FOR INDEX OF SHEETS, SEE SHEET NO. 2
FOR LIST OF ILLINOIS DOT HIGHWAY STANDARDS, SEE SHEET NO. 2

STATE OF ILLINOIS
DEPARTMENT OF TRANSPORTATION
DIVISION OF HIGHWAYS

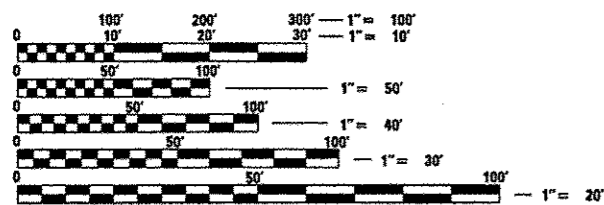
**PROPOSED
HIGHWAY PLANS**

FAI ROUTE 55 (I-55)
SECTION D6 LOGAN CO BR 2011-1
PROJECT NHPP-0055 (401)
LOGAN COUNTY
BRIDGE REHABILITATION
C-96-032-11

DESIGN DESIGNATION
FAI ROUTE 55 (I-55)
FEDERAL INTERSTATE
ADT 19,500 (2011)
65.7% PV
3.5% SU
30.8% MU
DESIGN SPEED: 70 MPH

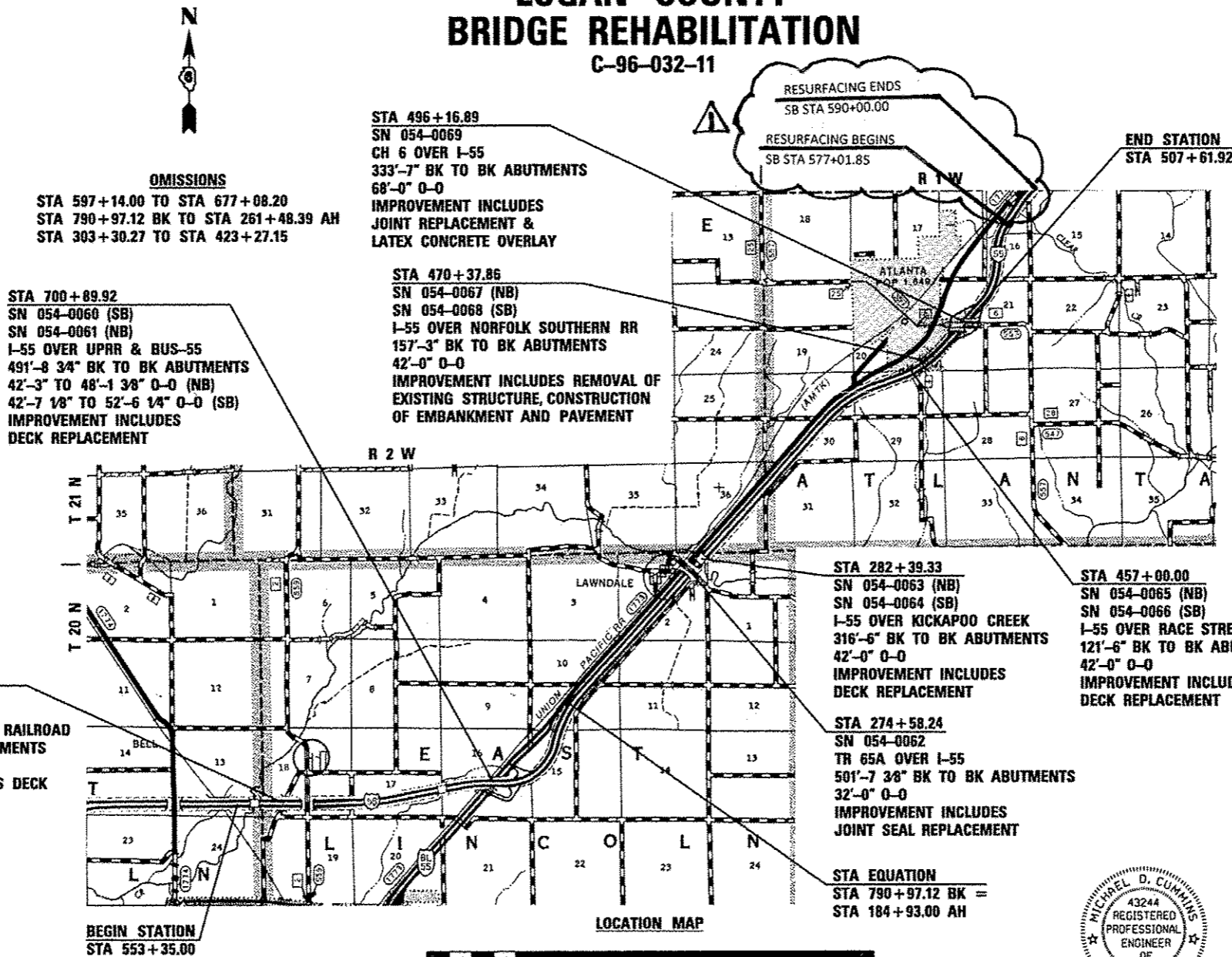


LOCATION OF SECTION INDICATED THUS: - [black rectangle] -



FULL SIZE PLANS HAVE BEEN PREPARED USING STANDARD ENGINEERING SCALES. REDUCED SIZED PLANS WILL NOT CONFORM TO STANDARD SCALES. IN MAKING MEASUREMENTS ON REDUCED PLANS, THE ABOVE SCALES MAY BE USED.

J.U.L.I.E.
JOINT UTILITY LOCATION INFORMATION FOR EXCAVATION
1-800-892-0123
OR 811



OMISSIONS
STA 597+14.00 TO STA 677+08.20
STA 790+97.12 BK TO STA 261+48.39 AH
STA 303+30.27 TO STA 423+27.15

STA 700+89.92
SN 054-0060 (SB)
SN 054-0061 (NB)
I-55 OVER UPRR & BUS-55
491'-8 3/4" BK TO BK ABUTMENTS
42'-3" TO 48'-1 3/8" O-0 (NB)
42'-7 1/8" TO 52'-6 1/4" O-0 (SB)
IMPROVEMENT INCLUDES
DECK REPLACEMENT

STA 496+16.89
SN 054-0069
CH 6 OVER I-55
333'-7" BK TO BK ABUTMENTS
68'-0" O-0
IMPROVEMENT INCLUDES
JOINT REPLACEMENT &
LATEX CONCRETE OVERLAY

STA 470+37.86
SN 054-0067 (NB)
SN 054-0068 (SB)
I-55 OVER NORFOLK SOUTHERN RR
157'-3" BK TO BK ABUTMENTS
42'-0" O-0
IMPROVEMENT INCLUDES REMOVAL OF
EXISTING STRUCTURE, CONSTRUCTION
OF EMBANKMENT AND PAVEMENT

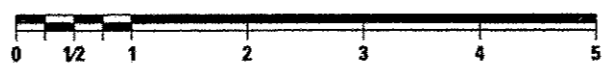
STA 282+39.33
SN 054-0063 (NB)
SN 054-0064 (SB)
I-55 OVER KICKAPOO CREEK
316'-6" BK TO BK ABUTMENTS
42'-0" O-0
IMPROVEMENT INCLUDES
DECK REPLACEMENT

STA 457+00.00
SN 054-0065 (NB)
SN 054-0066 (SB)
I-55 OVER RACE STREET
121'-6" BK TO BK ABUTMENTS
42'-0" O-0
IMPROVEMENT INCLUDES
DECK REPLACEMENT

STA 274+58.24
SN 054-0062
TR 65A OVER I-55
501'-7 3/8" BK TO BK ABUTMENTS
32'-0" O-0
IMPROVEMENT INCLUDES
JOINT SEAL REPLACEMENT

STA EQUATION
STA 790+97.12 BK =
STA 184+93.00 AH

BEGIN STATION
STA 553+35.00



GROSS LENGTH = 56,031.04 FT. = 10.612 MILES
NET LENGTH = 29,536.40 FT. = 5.594 MILES

REVISÉ 6-3-13



Michael D. Cummins 3/14/13
ILLINOIS PROFESSIONAL NO. 43244
(Expires 11/30/13)

CONTRACT NO. 72E11



PROJECT ENGINEER JEFF MYERS (217) 782-4761
TEAM MANAGER TOM COX (217) 524-7940

STATE OF ILLINOIS
DEPARTMENT OF TRANSPORTATION
DIVISION OF HIGHWAYS
SUBMITTED March 21 2013
Reg. 2/Dmk
DEPUTY DIRECTOR OF HIGHWAYS, REGION ENGINEER
May 10 2013
John D. Baranzelli, P.E.
ENGINEER OF DESIGN AND ENVIRONMENT
May 10 2013
Omer Osman, P.E.
DIRECTOR OF HIGHWAYS, CHIEF ENGINEER

PRINTED BY THE AUTHORITY
OF THE STATE OF ILLINOIS