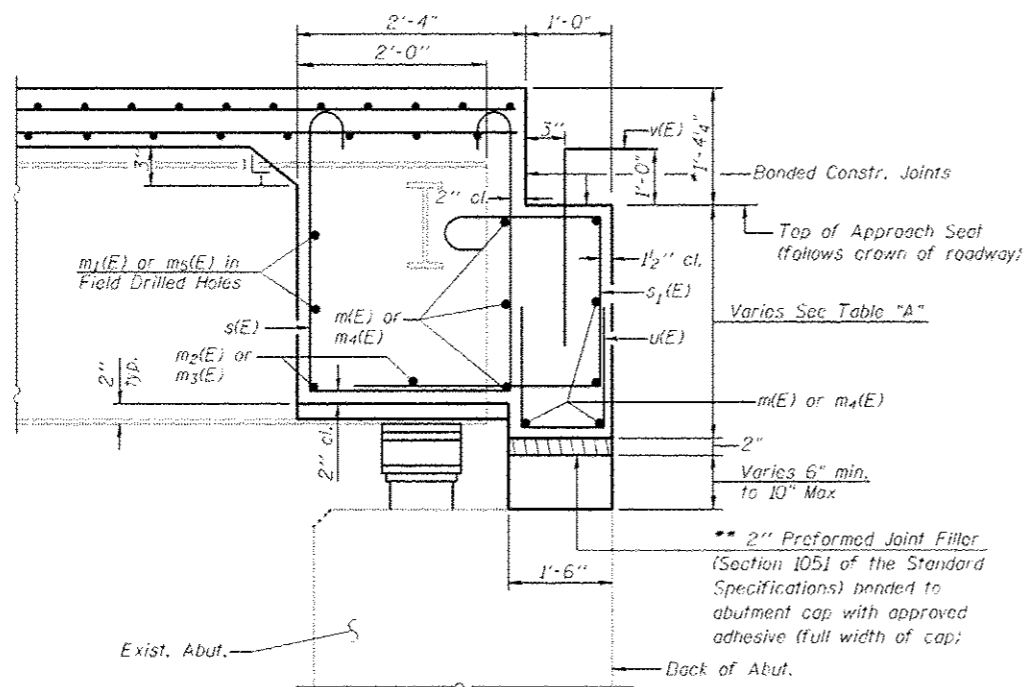


**DIAPHRAGM ELEVATION AT ABUTMENT**

(Looking East at E. Abut. N.B. Lanes, W. Abut. similar)  
 (Looking West at W. Abut. S.B. Lanes, E. Abut. similar)



**SECTION A-A**

Dimensions at right angles to abutment, except as shown.

TABLE "A"

SN 054-0058 SB	North End (Min.)	Crown (Max.)	South (Median) End
West Abut.	2'-4 7/8"	2'-10"	2'-5 7/8"
East Abut.	2'-5 3/8"	2'-10 1/2"	2'-6 3/8"

SN 054-0057 NB	North (Median) End	Crown (Max.)	South End (Min.)
West Abut.	2'-5 1/8"	2'-9 1/4"	2'-4 1/8"
East Abut.	2'-5 3/8"	2'-9 1/8"	2'-4 3/8"

Notes:  
 Reinforcement bars and concrete in diaphragm are billed with superstructure on sheet 14 of 31.  
 For details of bars s(E) & s1(E) see sheet 14 of 31.  
 The s(E) and s1(E) bars shall be placed parallel to the beams. Spacing for these bars shall be at right angles to the beams.

**MIN. BAR LAP**

#6 bar = 3'-4" (Diaphragm)

\* Prior to grinding.  
 \*\* Cost Included with Concrete Superstructure

REV. SHEET 6-3-13