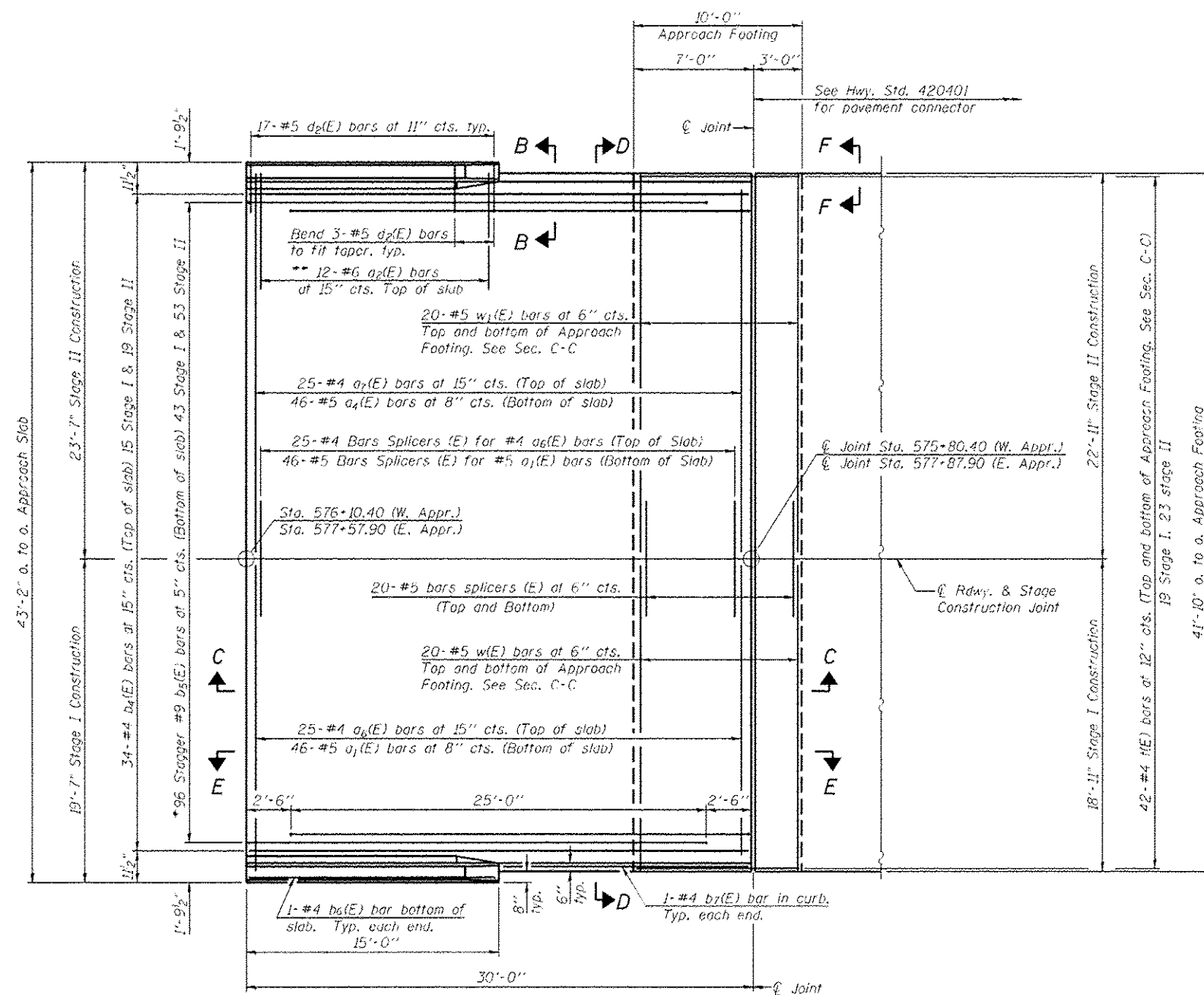
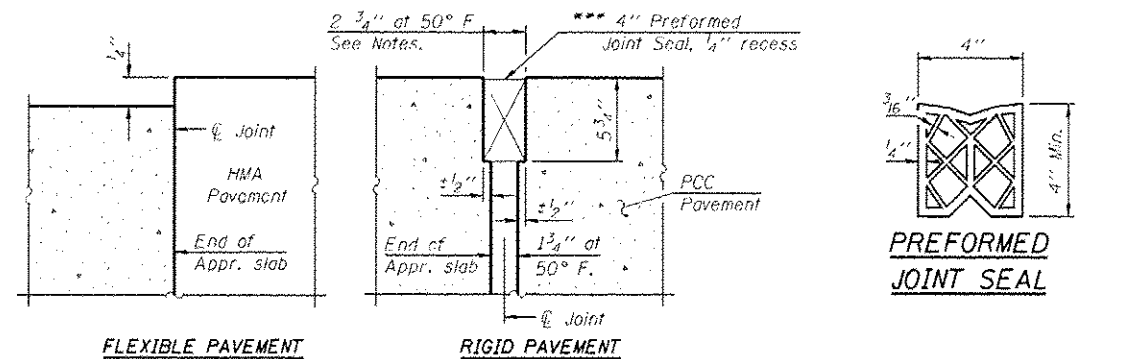


Notes:  
 See sheet 17 of 31 for Sections C-C & D-D and View E-E.  
 $a_1(E)$ ,  $a_4(E)$ ,  $a_6(E)$  and  $a_7(E)$  bar spacings measured along  $\varnothing$  Rdwy.  
 The joint opening shall be determined per Article 520.04 except that on jointless structures, the distance described as the bridge length between the nearest fixed bearings each way from the joint shall be taken as half the bridge length plus the approach slab length. The minimum dimension shall be  $1\frac{1}{2}$ " for installation purposes.

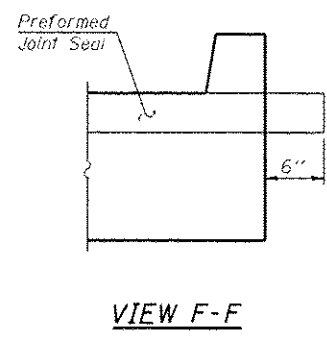
\*\*\* Cost included with Concrete Superstructure.



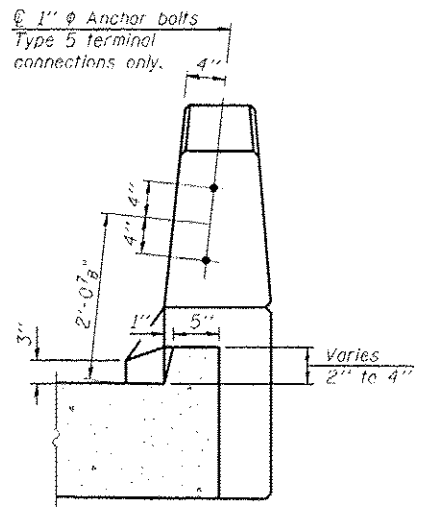
**PLAN**  
 W. APPROACH NB & E. APPROACH SB SHOWN  
 E. APPROACH NB & W. APPROACH SB SIMILAR



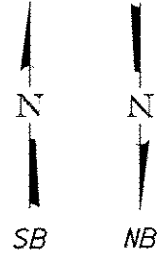
**DETAIL A**



**VIEW F-F**



**VIEW B-B**



\* Tilt #9  $b_5(E)$  bars as required to maintain clearance.  
 \*\* Space between  $a_6(E)$  or  $a_7(E)$  bars, typ. ea. parapet.

BA-0		12-12-17		REV. SHEET 6-3-13		(Sheet 1 of 2)				
<b>CEC</b> Cummins Engineering Corporation Civil and Structural Engineering	JOB # 2276.3	DESIGNED - AAN	REVISED -	<b>STATE OF ILLINOIS</b> <b>DEPARTMENT OF TRANSPORTATION</b>						
	FILE # 0540057.0058-16-17-ApprSlab.dgn	CHECKED - MDC	REVISED -							
	DATE # 5/14/2013	DRAWN - SJS	REVISED -							
		CHECKED - MDC	REVISED -							
				<b>BRIDGE APPROACH SLAB DETAILS</b> <b>STRUCTURE NO. 054-0057 (NB) &amp; 054-0058 (SB)</b>		F.A.I. RTE. 55	SECTION D6 LOGAN CO BR 2011-1	COUNTY LOGAN	TOTAL SHEETS 429	SHEET NO. 215
				SHEET NO. 16 OF 31 SHEETS		ILLINOIS FED. AID PROJECT		CONTRACT NO. 72E11		