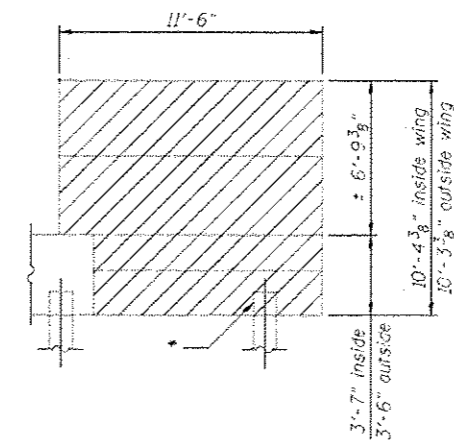
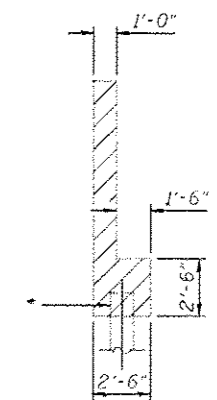


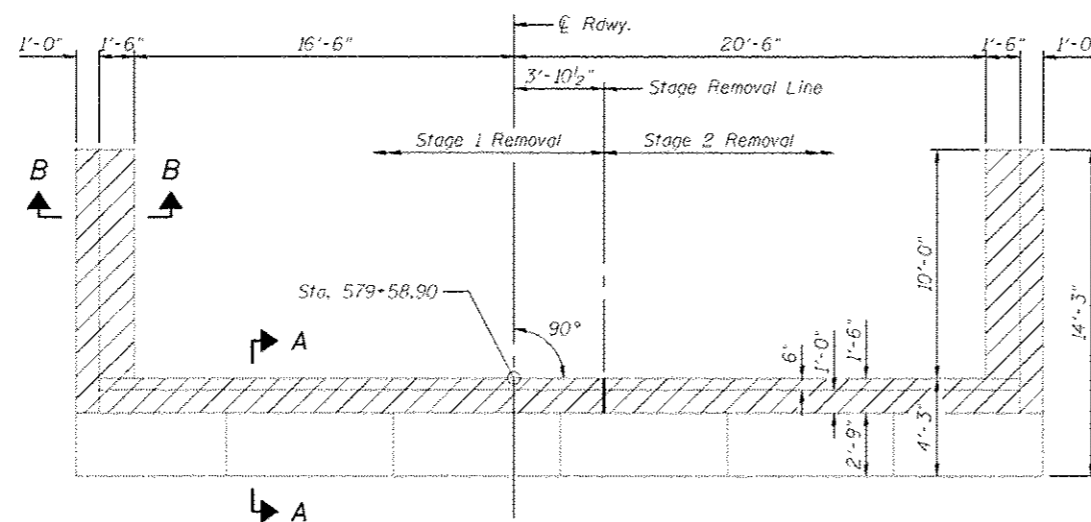
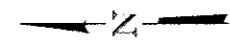
**ELEVATION**  
(Looking West)



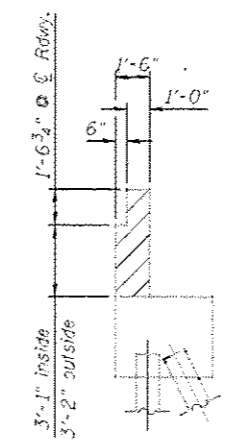
**WING WALL ELEVATION**



**SECTION B-B**



**PLAN - EAST ABUTMENTS**  
S.N. 054-0057 NB SHOWN  
S.N. 054-0058 SB SIMILAR



**SECTION A-A**

**TWO ABUTMENTS  
BILL OF MATERIAL**

Item	Unit	Total
Concrete Removal	Cu. Yd.	39.5

**NOTE**

Plan elevations relative to the existing structure have been taken from existing plans and reduced by 0.44 feet to match benchmark datum.

REV. SHEET 6-3-13

**CEC** Cummins  
Engineering  
Corporation  
Civil and Structural Engineering

JOB # 2276.3  
FILE # 0540057\_0058-21-EastAbutRem.dgn  
DATE # 5/14/2013

DESIGNED - AAN  
CHECKED - MDC  
DRAWN - SJS  
CHECKED - MDC

REVISED -  
REVISED -  
REVISED -  
REVISED -

STATE OF ILLINOIS  
DEPARTMENT OF TRANSPORTATION

EAST ABUTMENTS CONCRETE REMOVAL  
STRUCTURE NO. 054-0057 (NB) & 054-0058 (SB)

SHEET NO. 21 OF 31 SHEETS

F.A.I. RTE.	SECTION	COUNTY	TOTAL SHEETS	SHEET NO.
55	D6 LOGAN CO BR 2011-1	LOGAN	429	220

CONTRACT NO. 72E11

ILLINOIS FED. AID PROJECT