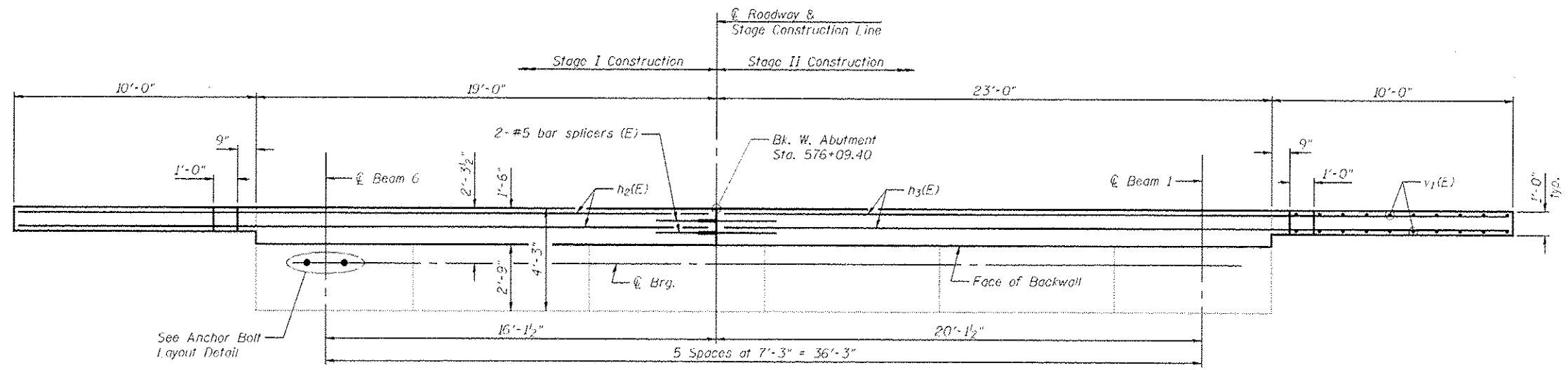
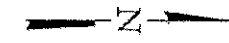


\* Denotes bar to be epoxy grouted in accordance with Section 584 of the Standard Specifications. Minimum embedment = 9". Cost included with Concrete Structures.

**MINIMUM BAR LAP**  
#5 bar = 3'-3"

**ELEVATION**  
(Looking West)



**PLAN - WEST ABUTMENT SB**

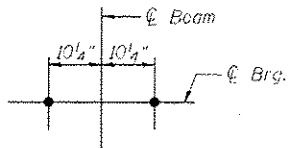
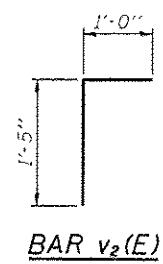
**LEGEND**  
[Symbol] Denotes Structural Repair of Concrete (Depth Equal to or Less Than 5")

**WEST ABUTMENT SB  
BILL OF MATERIAL**

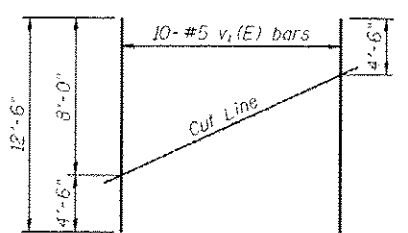
Bar	No.	Size	Length	Shape
h(E)	16	#5	4'-9"	—
h1(E)	36	#5	8'-9"	—
h2(E)	2	#5	28'-6"	—
h3(E)	2	#5	32'-6"	—
v1(E)	20	#5	12'-6"	—
v2(E)	84	#5	2'-5"	Γ
Structure Excavation			Cu. Yd.	87
Concrete Structures			Cu. Yd.	6.8
Bar Splicers			Each	2
Reinforcement Bars, Epoxy Coated			Pound	1010
Structural Repair of Concrete (Depth Equal to or Less Than 5")			Sq. Ft.	1

For details of Bar Splicers, see sheet 30 of 31.

**NOTE**  
Plan elevations relative to the existing structure have been taken from existing plans and reduced by 0.44 feet to match benchmark datum.



**ANCHOR BOLT LAYOUT DETAIL**



**FIELD CUTTING DIAGRAM**

Order v1(E) bars full length. Cut as shown and use remainder of bars in opposite face.

**REV. SHEET 6-3-13**