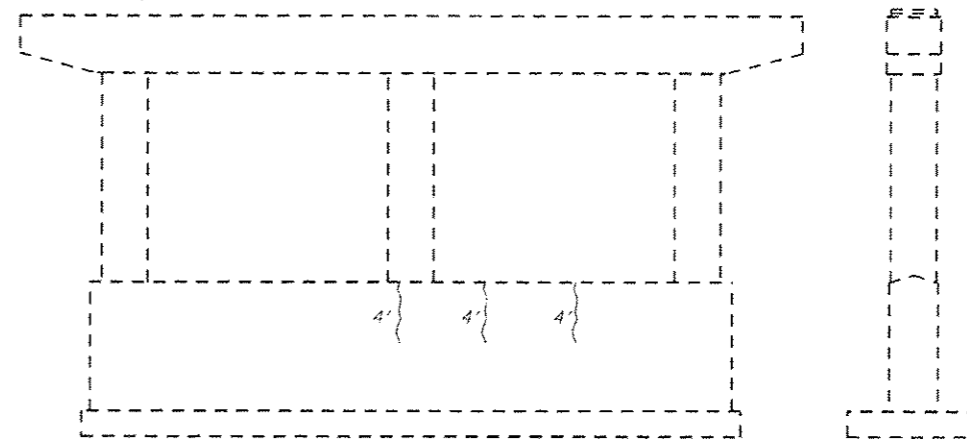


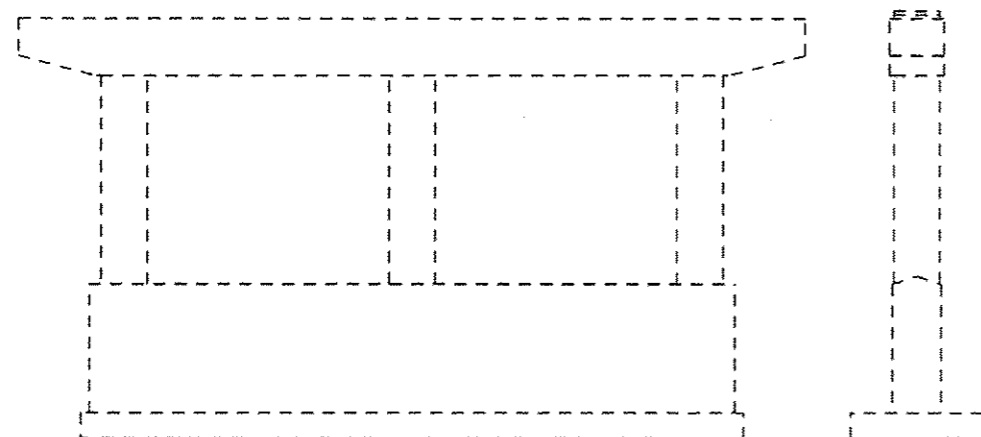
Pier 1 S.B. WEST FACE

Pier 1 S.B. SOUTH END



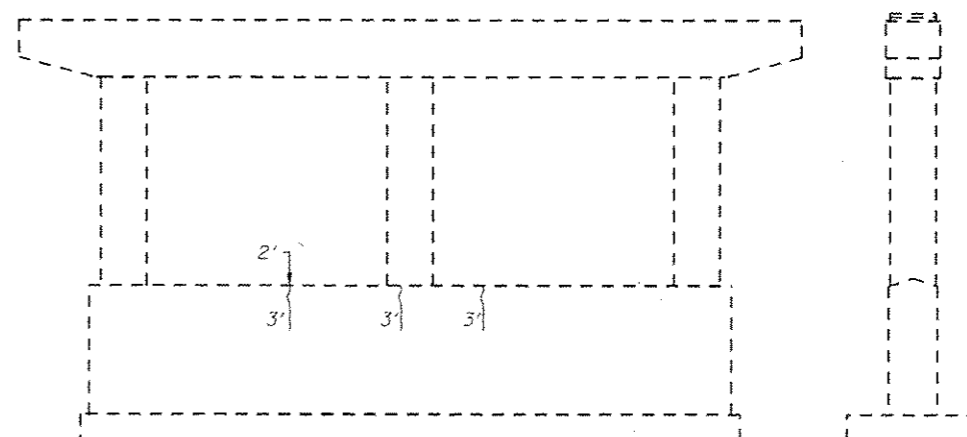
Pier 2 S.B. WEST FACE

Pier 2 N.B. SOUTH END



Pier 1 S.B. EAST FACE

Pier 1 S.B. NORTH END



Pier 2 S.B. EAST FACE

Pier 2 N.B. NORTH END

LEGEND



Denotes Structural Repair of Concrete
(Depth Equal to or Less Than 5")



Epoxy Crack Injection

△ REV. SHEET 6-3-13

BILL OF MATERIAL

Item	Unit	Total
Structural Repair of Concrete (Depth Equal to or Less Than 5")	Sq. Ft.	5
Epoxy Crack Injection	Foot	23

CEC Cummins
Engineering
Corporation
Civil and Structural Engineering

JOB • 2276.3
FILE • 0540057_0058-26-27-PierRepair.dgn
DATE • 5/14/2013

DESIGNED - AAN	REVISED -
CHECKED - MDC	REVISED -
DRAWN - SJS	REVISED -
CHECKED - MDC	REVISED -

**STATE OF ILLINOIS
DEPARTMENT OF TRANSPORTATION**

**PIER REPAIRS
STRUCTURE NO. 054-0058 (SB)**
SHEET NO. 27 OF 31 SHEETS

F.A.J. RTE.	SECTION	COUNTY	TOTAL SHEETS	SHEET NO.
55	DE LOGAN CO BR 2011-1	LOGAN	429	226
CONTRACT NO. T2E11				
ILLINOIS FED. AID PROJECT				