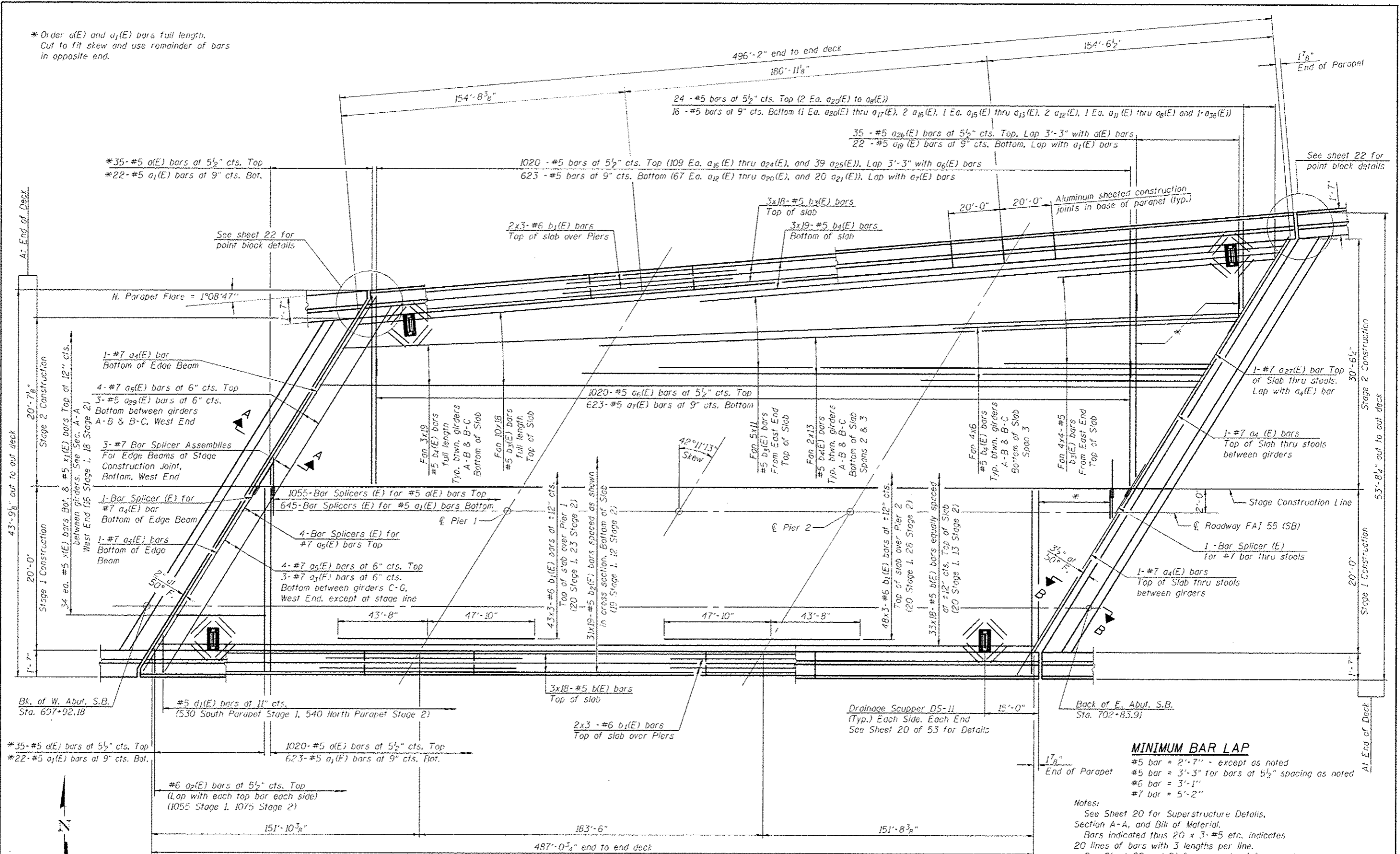


* Order a(E) and a₁(E) bars full length.
Cut to fit skew and use remainder of bars in opposite end.



*35- #5 a(E) bars at 5 1/2" cts. Top
*22- #5 a₁(E) bars at 9" cts. Bot.

24 - #5 bars at 5 1/2" cts. Top (2 Ea. a₂₀(E) to a₈(E))
16 - #5 bars at 9" cts. Bottom (1 Ea. a₂₀(E) thru a₁₇(E), 2 a₁₆(E), 1 Ea. a₁₅(E) thru a₁₃(E), 2 a₁₂(E), 1 Ea. a₁₁(E) thru a₈(E) and 1-a₃₆(E))

35 - #5 a₂₆(E) bars at 5 1/2" cts. Top, Lap 3'-3" with a(E) bars
22 - #5 a₁₉(E) bars at 9" cts. Bottom, Lap with a₁(E) bars

1020 - #5 bars at 5 1/2" cts. Top (109 Ea. a₁₆(E) thru a₂₄(E), and 39 a₂₅(E)), Lap 3'-3" with a₆(E) bars
623 - #5 bars at 9" cts. Bottom (67 Ea. a₁₂(E) thru a₂₀(E), and 20 a₂₁(E)), Lap with a₇(E) bars

MINIMUM BAR LAP
#5 bar = 2'-7" - except as noted
#5 bar = 3'-3" for bars at 5 1/2" spacing as noted
#6 bar = 3'-1"
#7 bar = 5'-2"

Notes:
See Sheet 20 for Superstructure Details, Section A-A, and Bill of Material.
Bars indicated thus 20 x 3-#5 etc. indicates 20 lines of bars with 3 lengths per line.
See Sheet 20 and 21 for parapet reinforcement.
See Sheet 32 for Section B-B and finger plate expansion joint details.

REV. SHEET G-3-13 PLAN - SB

CEC Cummins Engineering Corporation Civil and Structural Engineering	JOB	• 2265.2	DESIGNED	- AAN	REVISED	-	STATE OF ILLINOIS DEPARTMENT OF TRANSPORTATION	SUPERSTRUCTURE STRUCTURE NO. 054-0060 (SB)	F.A.I. RTE.	SECTION	COUNTY	TOTAL SHEETS	SHEET NO.
	FILE	• 0540060.0061-72E11-17-19-Super.dgn	CHECKED	- MDC	REVISED	-			55	D6 LOGAN CO BR 2011-1	LOGAN	429	247
	DATE	• 5/14/2013	DRAWN	- TSH	REVISED	-			CONTRACT NO. 72E11				
				CHECKED	- MDC	REVISED			-	ILLINOIS FED. AID PROJECT			