

NOTE

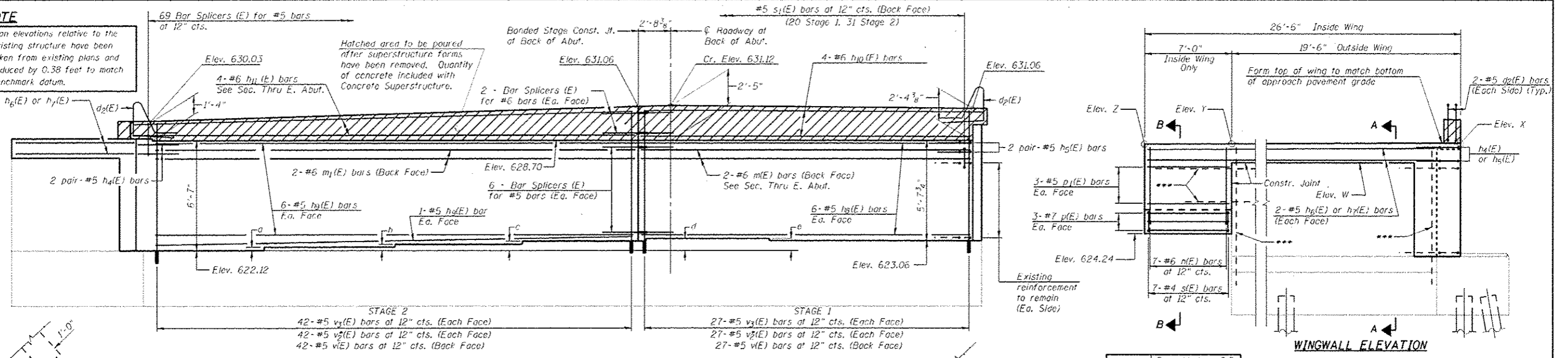
Plan elevations relative to the existing structure have been taken from existing plans and reduced by 0.38 feet to match benchmark datum.

69 Bar Splicers (E) for #5 bars at 12" cts.

Hatched area to be poured after superstructure forms have been removed. Quantity of concrete included with Concrete Superstructure.

Bonded Stage Const. Jt. of Back of Abut.

#5 s₁(E) bars at 12" cts. (Back Face) (20 Stage 1, 31 Stage 2)



East Abut. - S.B.		
Elev.	Inside Wing	Outside Wing
W	629.13	628.12
X	629.81	628.78
Y	629.55	628.65
Z	629.43	

ABUTMENT BILL OF MATERIAL

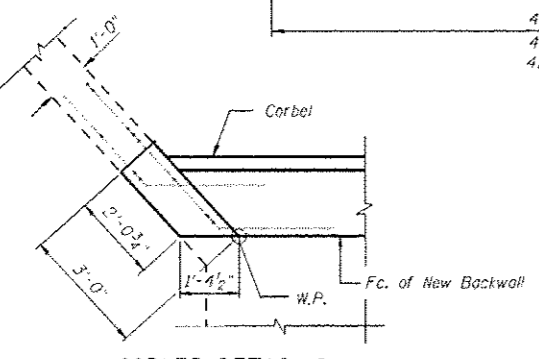
Bar	No.	Size	Length	Shape
ds(E)	4	#5	7'-11"	U
hs(E)	4	#5	5'-0"	—
hg(E)	4	#5	5'-0"	—
ht(E)	4	#5	19'-2"	—
hz(E)	4	#5	25'-3"	—
ha(E)	12	#5	26'-9"	—
hs(E)	14	#5	41'-0"	—
hx(E)	4	#6	26'-10"	—
hy(E)	4	#6	41'-0"	—
mi(E)	2	#6	26'-10"	—
mj(E)	2	#6	41'-0"	—
ni(E)	7	#6	9'-1"	—
pi(E)	6	#7	6'-8"	—
pl(E)	6	#5	6'-8"	—
si(E)	7	#4	7'-5"	—
s ₁ (E)	51	#5	4'-2"	—
vi(E)	69	#5	3'-9"	—
v ₃ (E)	138	#5	6'-3"	—
vx(E)	138	#5	3'-2"	—
Structure Excavation		Cu. Yd.	187	
Concrete Structures		Cu. Yd.	28.3	
Reinforcement Bars, Epoxy Coated		Pound	3910	
Bar Splicers		Each	87	
Concrete Sealer		Sq. Ft.	426	

ELEVATION
(Looking East - E. Abut. - S.B.)

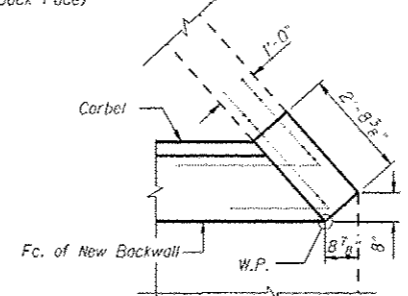
TABLE OF EXISTING STEP HEIGHTS

	a	b	c	d	e
East Abutment (S.B.)	3 ³ / ₈ "	6 ⁷ / ₈ "	9 ⁵ / ₈ "	12"	11 ¹ / ₂ "

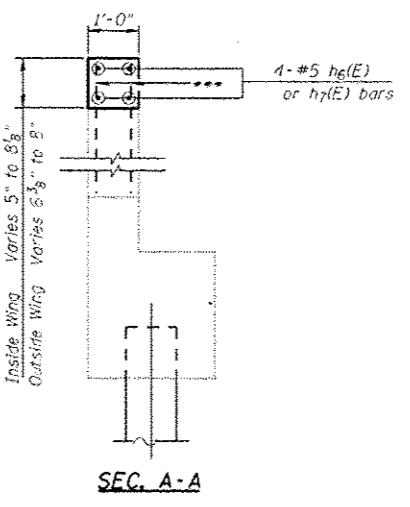
*** Clean and incorporate existing bars into new construction. Trim as required.



CORNER DETAIL G
(hatch black above not shown)



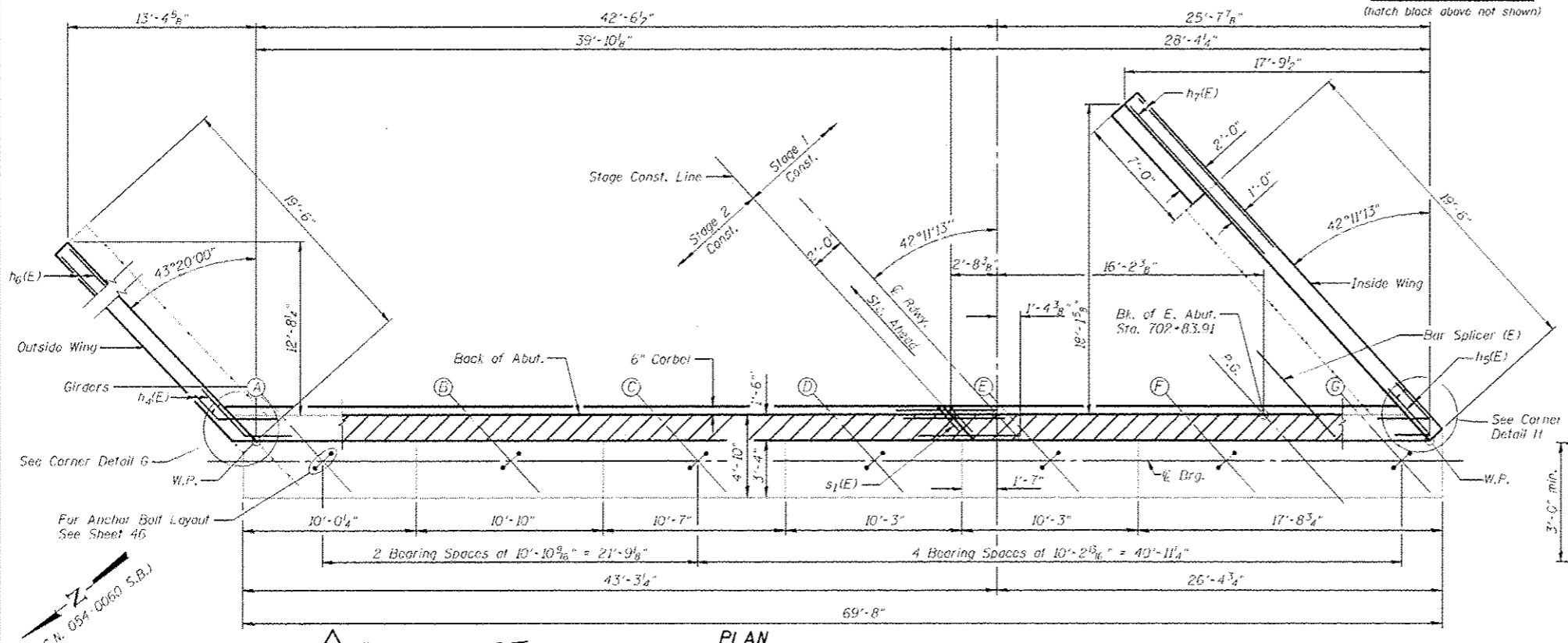
CORNER DETAIL H
(hatch black above not shown)



SEC. A-A

SEC. B-B

Notes:
 All bars designated with an asterisk (ex: v₃(E)) shall be epoxy grouted in accordance with Section 584 of the Standard Specifications. Minimum embedment = 9". Locate bars to miss existing reinforcement.
 Existing wingwall reinforcement shall be cleaned and incorporated into the new construction. Cost included with Concrete Removal.
 Existing vertical bars in backwall shall be cut off and covered with a layer of epoxy. Cost included with Concrete Removal.
 Concrete Sealer shall be applied to the front face of the backwall.
 The s₁(E) bars shall be placed parallel to the roadway. Spacing for these bars shall be at right angles to roadway.
 See Sheet 22 for point black details at hatch block.
 See Section Thru East Abutment on Sheet 46 of 53.



REV. SHEET 6-3-13
(East Abutment - S.B.)

CEC Cummins Engineering Corporation
Civil and Structural Engineering

JOB # 2265-2
 FILE # 8540060_0061-72E11-42-43-Abutment-SB.dwg
 DATE 5/14/2013

DESIGNED - AAN
 CHECKED - MDC
 DRAWN - SJS
 CHECKED - TSH

REVISED -
 REVISED -
 REVISED -
 REVISED -

STATE OF ILLINOIS
DEPARTMENT OF TRANSPORTATION

EAST ABUTMENT DETAILS
STRUCTURE NO. 054-0060 (SB)
SHEET NO. 43 OF 53 SHEETS

F.A.I. RTE.	SECTION	COUNTY	TOTAL SHEETS	SHEET NO.
55	D6 LOGAN CD BR 2011-1	LOGAN	429	273

CONTRACT NO. 72E11
ILLINOIS FED. AID PROJECT