

Benchmark: C.B. 2 - Set chiseled  $\square$  on concrete slopewall North end between S.N. 054-0063 and S.N. 054-0064 at Sta. 283+85, 10 ft. left, Elev. 595.82.

Existing Structure: S.N. 054-0063 (Northbound) and S.N. 054-0064 (Southbound) built in 1974 as F.A.I. Route 55, Section 54-5B Station 282+39.33. The superstructure consists of three spans continuous steel 48" Plate Girders with reinforced concrete deck. The substructure consists of open stub abutments supported on concrete piles and solid piers supported on concrete piles. The structure length is 316'-6" back to back of abutments and 42'-0" out to out of deck with a 22° R.F. skew. Existing deck to be removed and replaced.

Traffic to be maintained using Stage Construction.

No Salvage.

STATION 282+39.33  
RE-BUILT 20\_\_ BY  
STATE OF ILLINOIS  
LOADING HS20-44 & ALT.  
STRUCTURE NO. 054-0063

STATION 282+39.33  
RE-BUILT 20\_\_ BY  
STATE OF ILLINOIS  
LOADING HS20-44 & ALT.  
STRUCTURE NO. 054-0064

**NAME PLATE N.B. STRUCTURE**  
See Std. 515001

**NAME PLATE S.B. STRUCTURE**  
See Std. 515001

**SEISMIC DATA**

Seismic Performance Category (SPC) = A  
Bedrock Acceleration Coefficient(A) = 0.046 g  
Site Coefficient (S) = 1

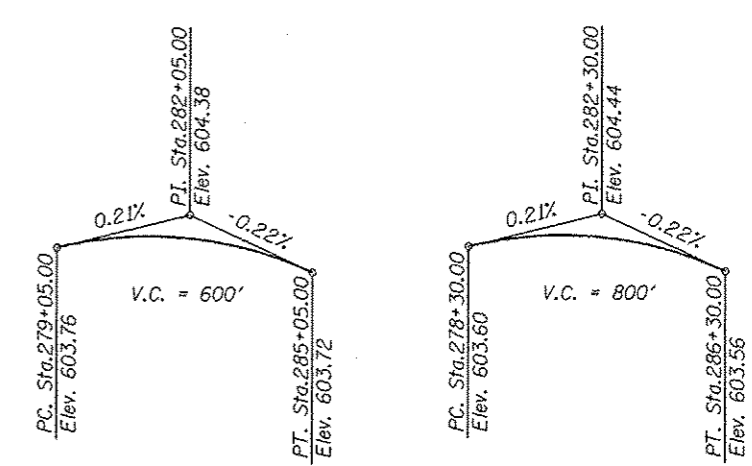
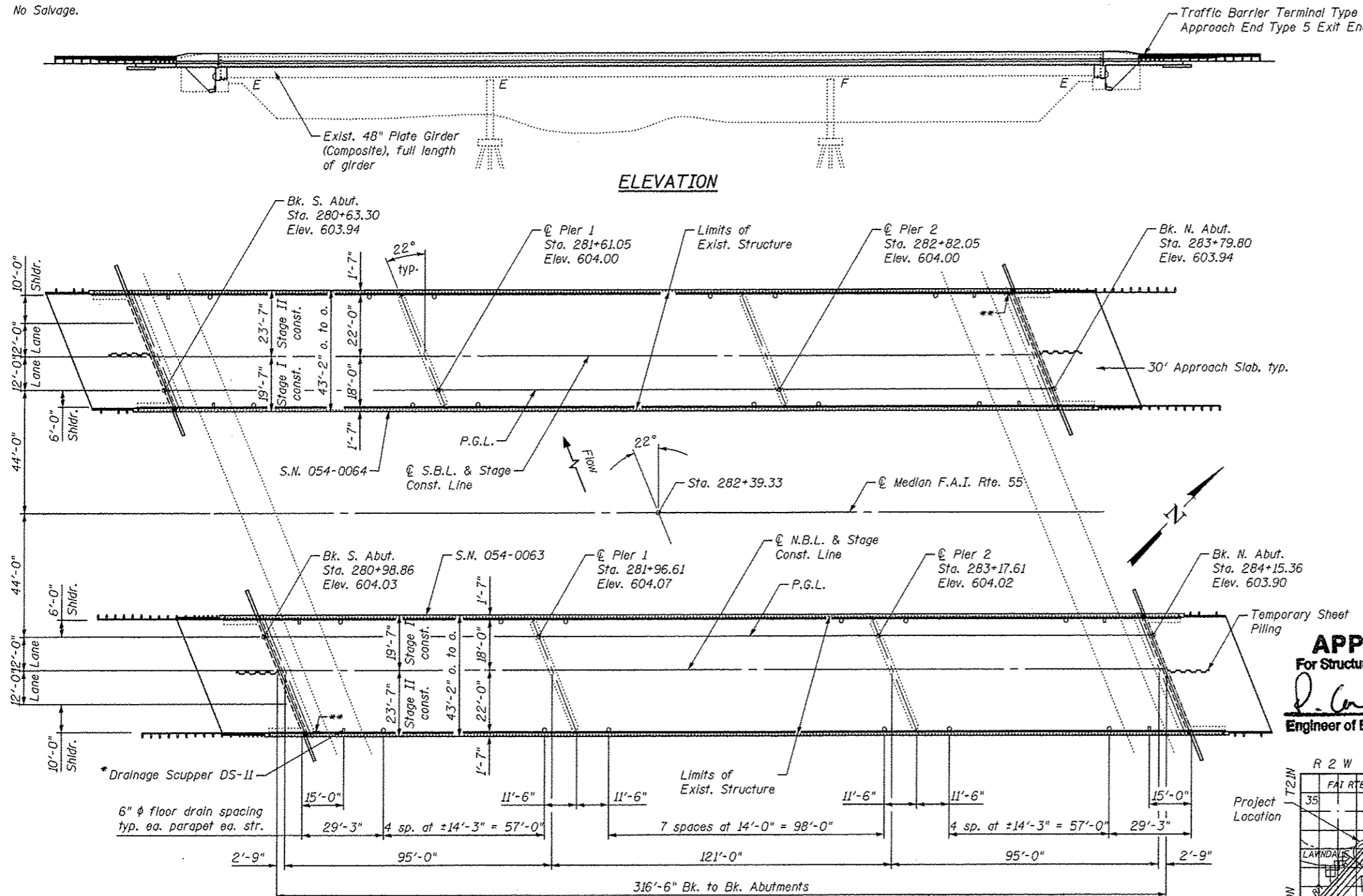
**DESIGN STRESSES**

FIELD UNITS (NEW CONST.)	FIELD UNITS (EXIST. CONST.)
$f'_c = 3,500$ psi	$f'_c = 3,500$ psi
$f_y = 60,000$ psi (Reinforcement)	$f_y = 40,000$ psi (Reinforcement)
$f_y = 36,000$ psi (Steel)	$f_y = 36,000$ psi (Steel)

**DESIGN SPECIFICATIONS (NEW CONST.)**

2002 AASHTO Standard Specifications for Highway Bridges 17th Edition  
1995 FHWA Retrofitting Manual

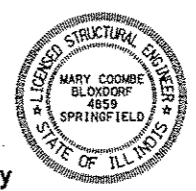
**LOADING HS 20-44 & ALT.**  
Allow 25#/sq. ft. for future wearing surface.



**PROPOSED PROFILE**  
N.B. S.N. 054-0063  
Along median edge of pavement

**PROPOSED PROFILE**  
S.B. S.N. 054-0064  
Along median edge of pavement

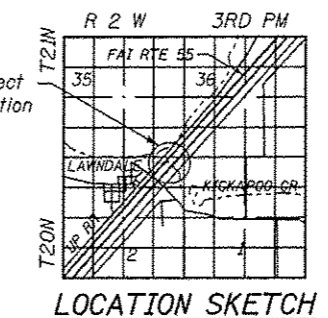
The profile grade depicts the final elevations after grinding. Up to 1/4" will be ground off the bridge deck and approach slab.



*Mary Coombe Bloxdorf*  
ILLINOIS STRUCTURAL NO. 4859  
EXPIRES 11/30/14  
DATE: 3/13/13

**APPROVED**  
For Structural Adequacy Only  
*J. Carl Puzey*  
Engineer of Bridges & Structures

**GENERAL PLAN & ELEVATION**  
F.A.I. RTE. 55 OVER KICKAPOO CREEK  
SECTION D6 LOGAN CO BR 2011-1  
LOGAN COUNTY  
STATION 282+39.33  
STRUCTURE NO. 054-0063 (N.B.)  
STRUCTURE NO. 054-0064 (S.B.)



**REVISIED SHEET 6-3-13**

STATE OF ILLINOIS  
DEPARTMENT OF TRANSPORTATION

FILE NAME = ...	USER NAME = JML	DESIGNED - RKM	REVISED -	SHEET NO. 1 OF 38 SHEETS
PLOT SCALE = 42/8.888888 1/4" = 1'	DRAWN - CFC	CHECKED - MCB	REVISED -	
PLOT DATE = 3/12/2013	CHECKED - RKM	DRAWN - CFC	REVISED -	
		CHECKED - MCB	REVISED -	

**CB** Coombe-Bloxdorf P.C.  
- CIVIL ENGINEERS -  
- STRUCTURAL ENGINEERS -  
- LAND SURVEYORS -  
Design Firm License No. 184-002703

F.A.I. RTE.	SECTION	COUNTY	TOTAL SHEETS	SHEET NO.
55	D6 LOGAN CO BR 2011-1	LOGAN	429	286

CONTRACT NO. 72E11  
ILLINOIS FED. AID PROJECT