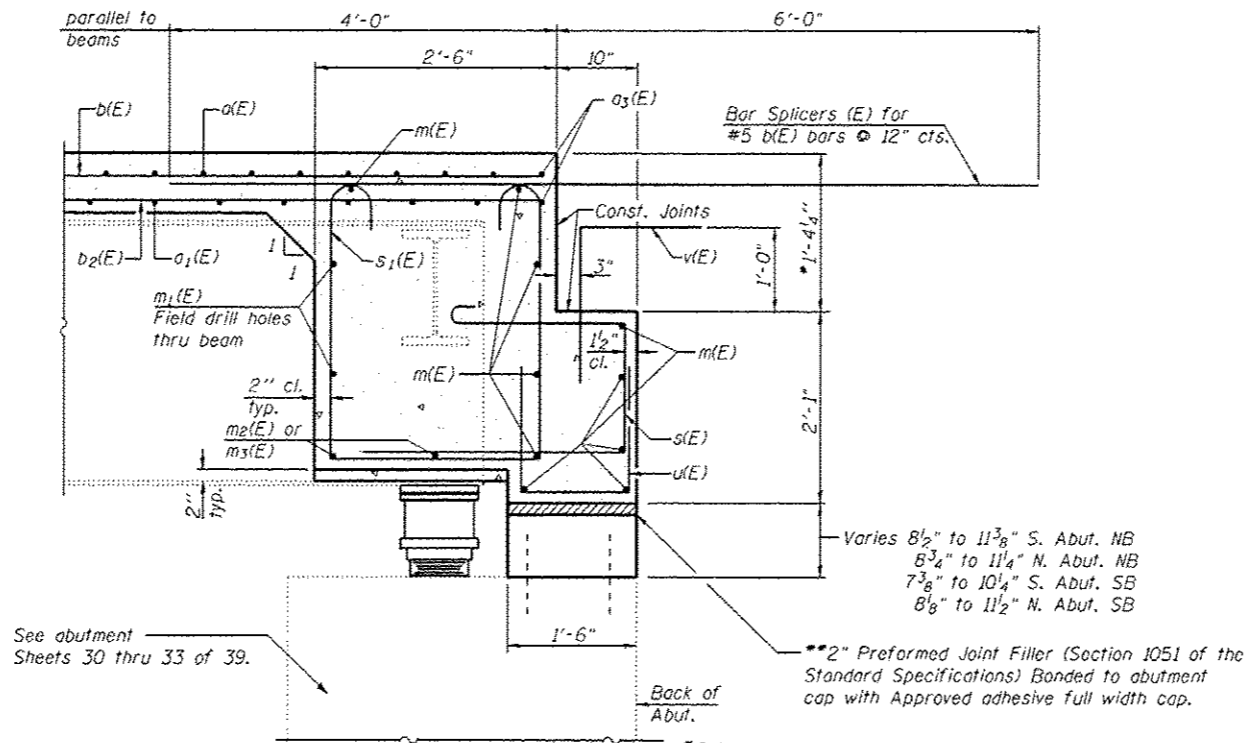


DIAPHRAGM ELEVATION AT ABUTMENT



SECTION A-A

Dimensions at right angles to abutment, except as shown.

Notes:
 Reinforcement bars in diaphragm are billed with superstructure on sheet 16 of 39.
 Concrete in diaphragm is included with Concrete Superstructure on sheet 16 of 39.
 Concrete in backwall is included with Concrete Structures on sheets 30 thru 33 of 39.
 For details of bars s(E), s1(E), v(E), u(E), see sheet 16 of 39.
 The s(E) and s1(E) bars shall be placed parallel to the beams. Spacing for these bars shall be at right angles to the beams.
 The cost of field drilling holes in webs for m1(E) is included in the cost of Reinforcement Bars (Epoxy Coated).
 See Section A-A for bar locations.

MIN. BAR LAP
 #6 bar = 3'-4" (Diaphragm)

REV. SHEET 6-3-13

FILE NAME *	USER NAME * .MPL	DESIGNED - GJB	REVISED -
...0540065-0066-72ell-017-diaphr-agn-deta	is-reb.dgn	CHECKED - MCB/RKM	REVISED -
CB PROJECT NO. 18065-1	PLOT SCALE * 0:2,000000 1" = 10'	DRAWN - CFC	REVISED -
	PLOT DATE * 5/18/2013	CHECKED - MCB/GJB	REVISED -

STATE OF ILLINOIS
 DEPARTMENT OF TRANSPORTATION

DIAPHRAGM DETAILS
 STRUCTURE NO. 054-0065 (N.B.) & 054-0066 (S.B.)

SHEET NO. 17 OF 39 SHEETS

CB Coombe-Bloxdorf P.C.
 - CIVIL ENGINEERS -
 - STRUCTURAL ENGINEERS -
 - LAND SURVEYORS -
 Design Firm License No. 184-002703

F.A.I. RTE.	SECTION	COUNTY	TOTAL SHEETS	SHEET NO.
55	D6 LOGAN CO BR 2011-1	LOGAN	429	340
				CONTRACT NO. 72E11
ILLINOIS FED. AID PROJECT				