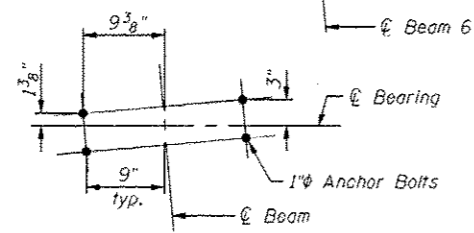
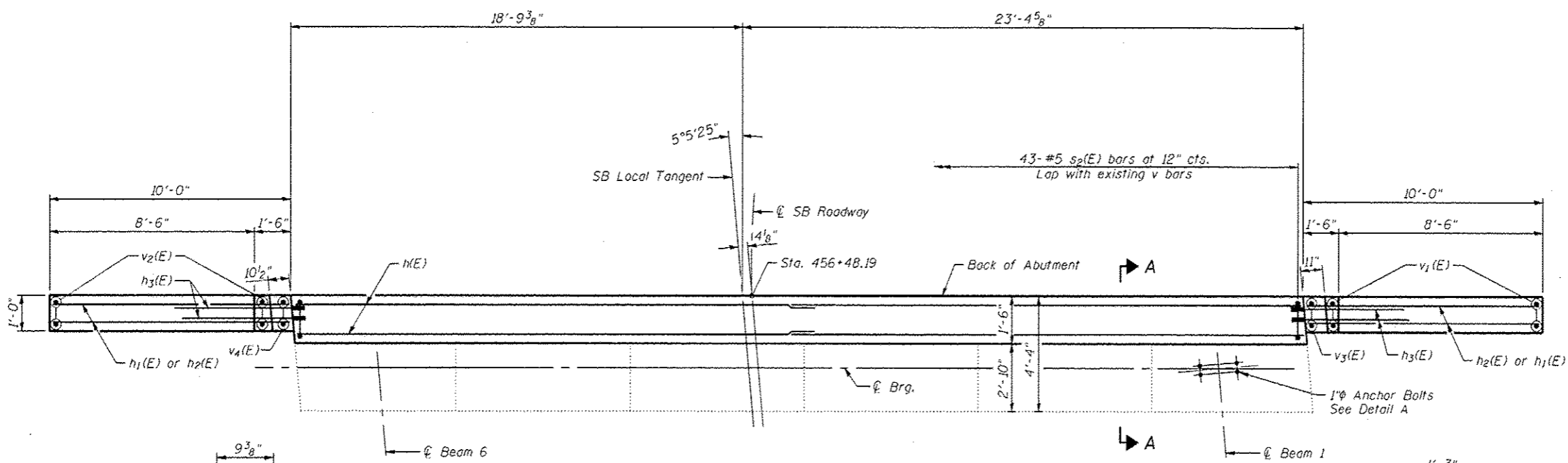
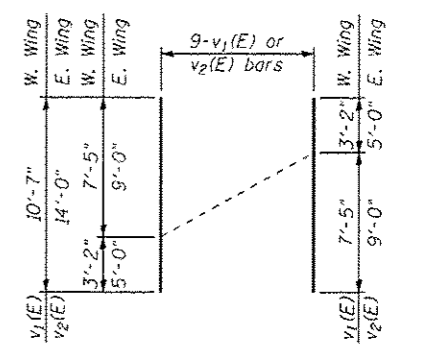
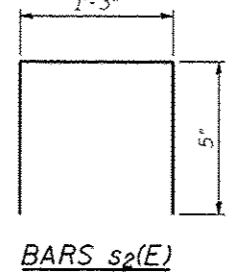


BILL OF MATERIAL

Bar	No.	Size	Length	Shape
h(E)	4	#5	22'-9"	—
h1(E)	34	#6	9'-8"	—
h2(E)	20	#5	8'-11"	—
h3(E)	34	#6	6'-0"	—
s2(E)	43	#5	2'-1"	U
v1(E)	9	#5	10'-7"	—
v2(E)	9	#5	14'-0"	—
v3(E)	2	#5	3'-10"	—
v4(E)	2	#5	5'-7"	—
Structure Excavation Cu. Yd. 69				
Concrete Structures Cu. Yd. 6.9				
Reinforcement Bars, Epoxy Coated Pound 1420				



MIN. BAR LAP
#5 bar = 3'-3"



FIELD CUTTING DIAGRAM
Order v1(E) and v2(E) bars full length. Cut as shown and use remainder of bars in opposite face.

REV. SHEET 6-3-13

FILE NAME * ...0540065-0066-72e11-030-s-abut-sb.dgn	USER NAME * MML	DESIGNED - GJB	REVISED -	STATE OF ILLINOIS DEPARTMENT OF TRANSPORTATION	SOUTH ABUTMENT (SOUTH BOUND STRUCTURE) STRUCTURE NO. 054-0065 (N.B.) & 054-0066 (S.B.)	F.A.I. NO.	SECTION	COUNTY	TOTAL SHEETS	SHEET NO.	
PLOT SCALE * 5/4,000,000 1/2" = 1'	PLOT DATE * 5/10/2013	CHECKED - MCB/RKM	REVISED -			55	D6 LOGAN CO BR 2011-1	LOGAN	429	353	30 OF 39 SHEETS
CB PROJECT NO 10265-1		DRAWN - CFC/MML	REVISED -			CONTRACT NO. 72E11					
		CHECKED - MCB/GJB	REVISED -			ILLINOIS FED. AID PROJECT					

CB Coombe-Bloxdorf P.C.
- CIVIL ENGINEERS -
- STRUCTURAL ENGINEERS -
- LAND SURVEYORS -
Design Firm License No. 184-002703