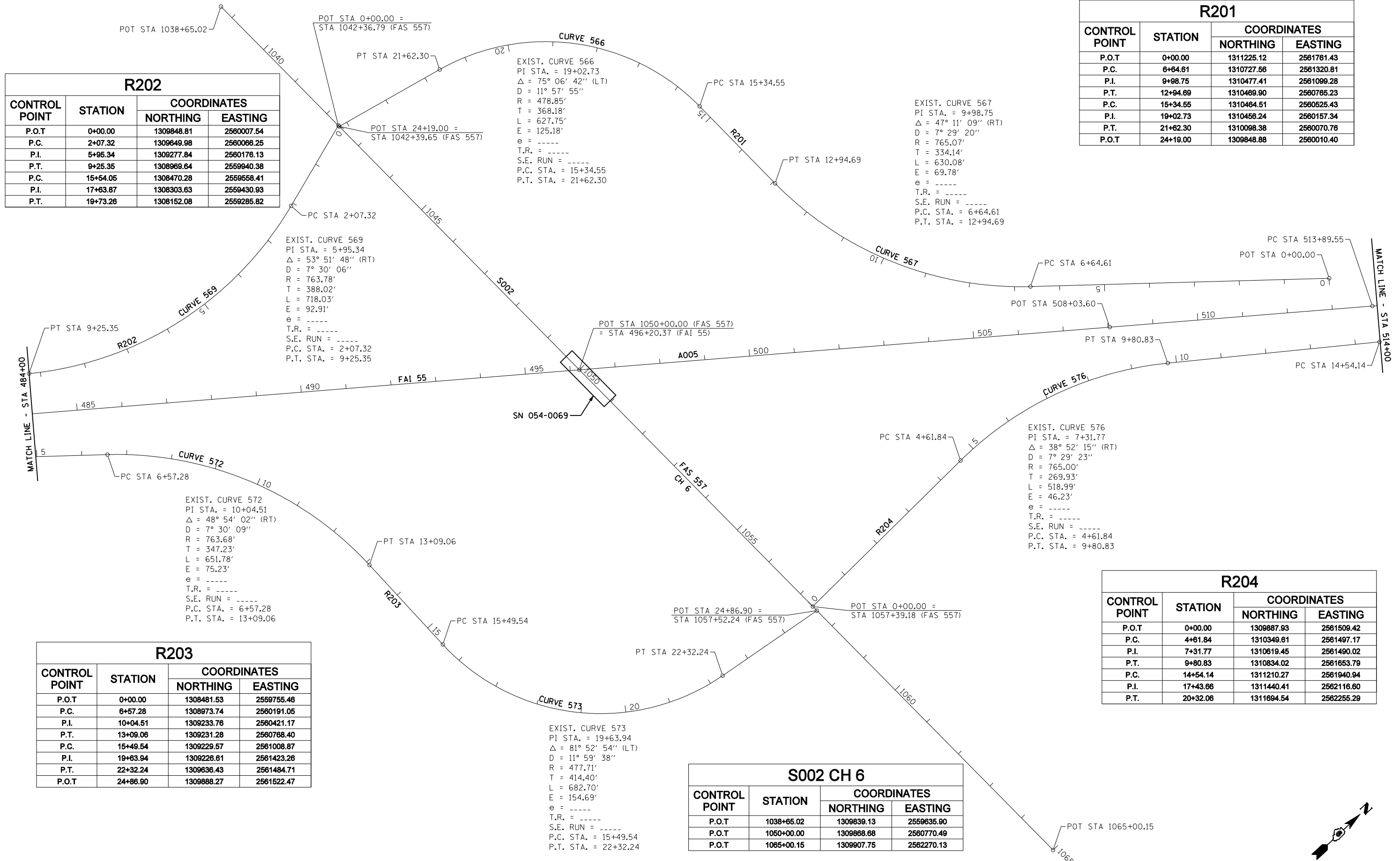


R202			
CONTROL POINT	STATION	COORDINATES	
		NORTHING	EASTING
P.O.T	0+00.00	1309848.81	2580007.54
P.C.	2+07.32	1309649.98	2580066.25
P.I.	5+95.34	1309277.84	2580176.13
P.T.	9+25.35	1308969.64	2559940.38
P.C.	15+54.05	1308470.28	2559558.41
P.I.	17+63.87	1308303.63	2559430.93
P.T.	19+73.26	1308152.08	2559285.82

R201			
CONTROL POINT	STATION	COORDINATES	
		NORTHING	EASTING
P.O.T	0+00.00	1311225.12	2561761.43
P.C.	6+64.61	1310727.56	2561320.81
P.I.	9+98.75	1310477.41	2561099.28
P.T.	12+94.69	1310469.90	2560765.23
P.C.	15+34.55	1310464.51	2560525.43
P.I.	19+02.73	1310456.24	2560157.34
P.T.	21+62.30	1310098.38	2560070.76
P.O.T	24+19.00	1309848.88	2560010.40



EXIST. CURVE 569  
 PI STA. = 5+95.34  
 $\Delta = 53^\circ 51' 48''$  (RT)  
 D = 7° 30' 06"  
 R = 763.78'  
 T = 388.02'  
 L = 718.03'  
 E = 92.91'  
 e = ----  
 T.R. = ----  
 S.E. RUN = ----  
 P.C. STA. = 2+07.32  
 P.T. STA. = 9+25.35

EXIST. CURVE 566  
 PI STA. = 19+02.73  
 $\Delta = 75^\circ 06' 42''$  (LT)  
 D = 11° 57' 55"  
 R = 478.85'  
 T = 368.18'  
 L = 627.75'  
 E = 125.18'  
 e = ----  
 T.R. = ----  
 S.E. RUN = ----  
 P.C. STA. = 15+34.55  
 P.T. STA. = 21+62.30

EXIST. CURVE 567  
 PI STA. = 9+98.75  
 $\Delta = 47^\circ 11' 09''$  (RT)  
 D = 7° 29' 20"  
 R = 765.07'  
 T = 334.14'  
 L = 630.08'  
 E = 69.78'  
 e = ----  
 T.R. = ----  
 S.E. RUN = ----  
 P.C. STA. = 6+64.61  
 P.T. STA. = 12+94.69

EXIST. CURVE 576  
 PI STA. = 7+31.77  
 $\Delta = 38^\circ 52' 15''$  (RT)  
 D = 7° 29' 23"  
 R = 765.00'  
 T = 269.93'  
 L = 518.99'  
 E = 46.23'  
 e = ----  
 T.R. = ----  
 S.E. RUN = ----  
 P.C. STA. = 4+61.84  
 P.T. STA. = 9+80.83

EXIST. CURVE 572  
 PI STA. = 10+04.51  
 $\Delta = 48^\circ 54' 02''$  (RT)  
 D = 7° 30' 09"  
 R = 763.68'  
 T = 347.23'  
 L = 651.78'  
 E = 75.23'  
 e = ----  
 T.R. = ----  
 S.E. RUN = ----  
 P.C. STA. = 6+57.28  
 P.T. STA. = 13+09.06

EXIST. CURVE 573  
 PI STA. = 19+63.94  
 $\Delta = 81^\circ 52' 54''$  (LT)  
 D = 11° 59' 38"  
 R = 477.71'  
 T = 414.40'  
 L = 682.70'  
 E = 154.69'  
 e = ----  
 T.R. = ----  
 S.E. RUN = ----  
 P.C. STA. = 15+49.54  
 P.T. STA. = 22+32.24

R203			
CONTROL POINT	STATION	COORDINATES	
		NORTHING	EASTING
P.O.T	0+00.00	1308481.53	2559755.46
P.C.	6+57.28	1308973.74	2580191.05
P.I.	10+04.51	1309233.76	2580421.17
P.T.	13+09.06	1309231.28	2580768.40
P.C.	15+49.54	1309229.57	2581008.87
P.I.	19+63.94	1309226.81	2581423.26
P.T.	22+32.24	1309636.43	2581484.71
P.O.T	24+86.90	1309888.27	2581522.47

S002 CH 6			
CONTROL POINT	STATION	COORDINATES	
		NORTHING	EASTING
P.O.T	1038+65.02	1309839.13	2559635.90
P.O.T	1050+00.00	1309868.68	2560770.49
P.O.T	1065+00.15	1309907.75	2562270.13

R204			
CONTROL POINT	STATION	COORDINATES	
		NORTHING	EASTING
P.O.T	0+00.00	1309887.93	2561509.42
P.C.	4+61.84	1310349.61	2561497.17
P.I.	7+31.77	1310819.45	2561490.02
P.T.	9+80.83	1310834.02	2561653.79
P.C.	14+54.14	1311210.27	2561940.94
P.I.	17+43.66	1311440.41	2562116.60
P.T.	20+32.06	1311694.54	2562255.29



JOB = 2236.10  
 FILE NAME = D672E11-shr-ATB.dgn  
 PLOT SCALE = 200.0000' / IN.  
 PLOT DATE = 3/18/2013

DESIGNED - NAK  
 DRAWN - TJD  
 CHECKED - NAK  
 DATE - 1/14/2011

REVISED -  
 REVISED -  
 REVISED -  
 REVISED -

STATE OF ILLINOIS  
 DEPARTMENT OF TRANSPORTATION

ALIGNMENT, CROSS TIES  
 & BENCHMARKS  
 SCALE: SHEET NO. 11 OF 12 SHEETS STA. 484+00 TO STA. 514+00

F.A.I. RTE.	SECTION	COUNTY	TOTAL SHEETS	SHEET NO.
55	D6 LOGAN CO BR 2011-1	LOGAN	429	73
FED. ROAD DIST. NO. ILLINOIS FED. AID PROJECT			CONTRACT NO. 72E11	

