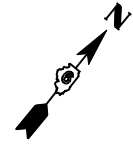


SEC 16, T20N, R2W, 3RD PM

SEC 15, T20N, R2W, 3RD PM

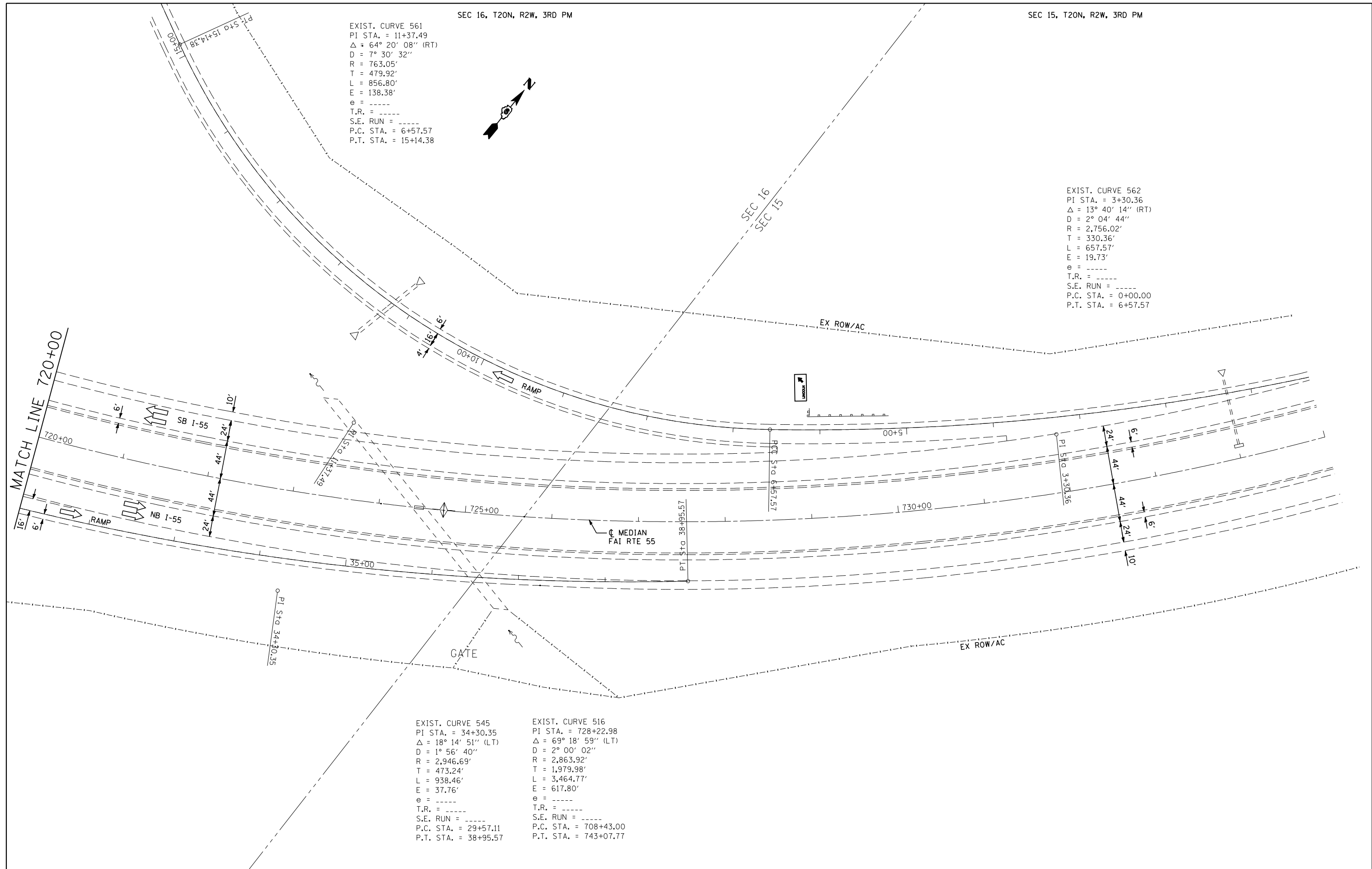
EXIST. CURVE 561
 PI STA. = 11+37.49
 $\Delta = 64^\circ 20' 08''$ (RT)
 $D = 7^\circ 30' 32''$
 $R = 763.05'$
 $T = 479.92'$
 $L = 856.80'$
 $E = 138.38'$
 $e = \text{-----}$
 T.R. = -----
 S.E. RUN = -----
 P.C. STA. = 6+57.57
 P.T. STA. = 15+14.38



EXIST. CURVE 562
 PI STA. = 3+30.36
 $\Delta = 13^\circ 40' 14''$ (RT)
 $D = 2^\circ 04' 44''$
 $R = 2,756.02'$
 $T = 330.36'$
 $L = 657.57'$
 $E = 19.73'$
 $e = \text{-----}$
 T.R. = -----
 S.E. RUN = -----
 P.C. STA. = 0+00.00
 P.T. STA. = 6+57.57

EXIST. CURVE 545
 PI STA. = 34+30.35
 $\Delta = 18^\circ 14' 51''$ (LT)
 $D = 1^\circ 56' 40''$
 $R = 2,946.69'$
 $T = 473.24'$
 $L = 938.46'$
 $E = 37.76'$
 $e = \text{-----}$
 T.R. = -----
 S.E. RUN = -----
 P.C. STA. = 29+57.11
 P.T. STA. = 38+95.57

EXIST. CURVE 516
 PI STA. = 728+22.98
 $\Delta = 69^\circ 18' 59''$ (LT)
 $D = 2^\circ 00' 02''$
 $R = 2,863.92'$
 $T = 1,979.98'$
 $L = 3,464.77'$
 $E = 617.80'$
 $e = \text{-----}$
 T.R. = -----
 S.E. RUN = -----
 P.C. STA. = 708+43.00
 P.T. STA. = 743+07.77



JOB = 2236.10
 FILE NAME = D672E11-shr-plan-6061.dgn
 PLOT SCALE = 100.0000' / IN.
 PLOT DATE = 3/18/2013

DESIGNED -
 DRAWN -
 CHECKED -
 DATE -

REVISED -
 REVISED -
 REVISED -
 REVISED -

**STATE OF ILLINOIS
 DEPARTMENT OF TRANSPORTATION**

PLAN SN 054-0060 & 054-0061

SCALE: SHEET NO. 4 OF 4 SHEETS STA. 720+00 TO STA. 735+00

F.A.I. RTE.	SECTION	COUNTY	TOTAL SHEETS	SHEET NO.
55	D6 LOGAN CO BR 2011-1	LOGAN	429	83
CONTRACT NO. 72E11				
FED. ROAD DIST. NO. ILLINOIS FED. AID PROJECT				