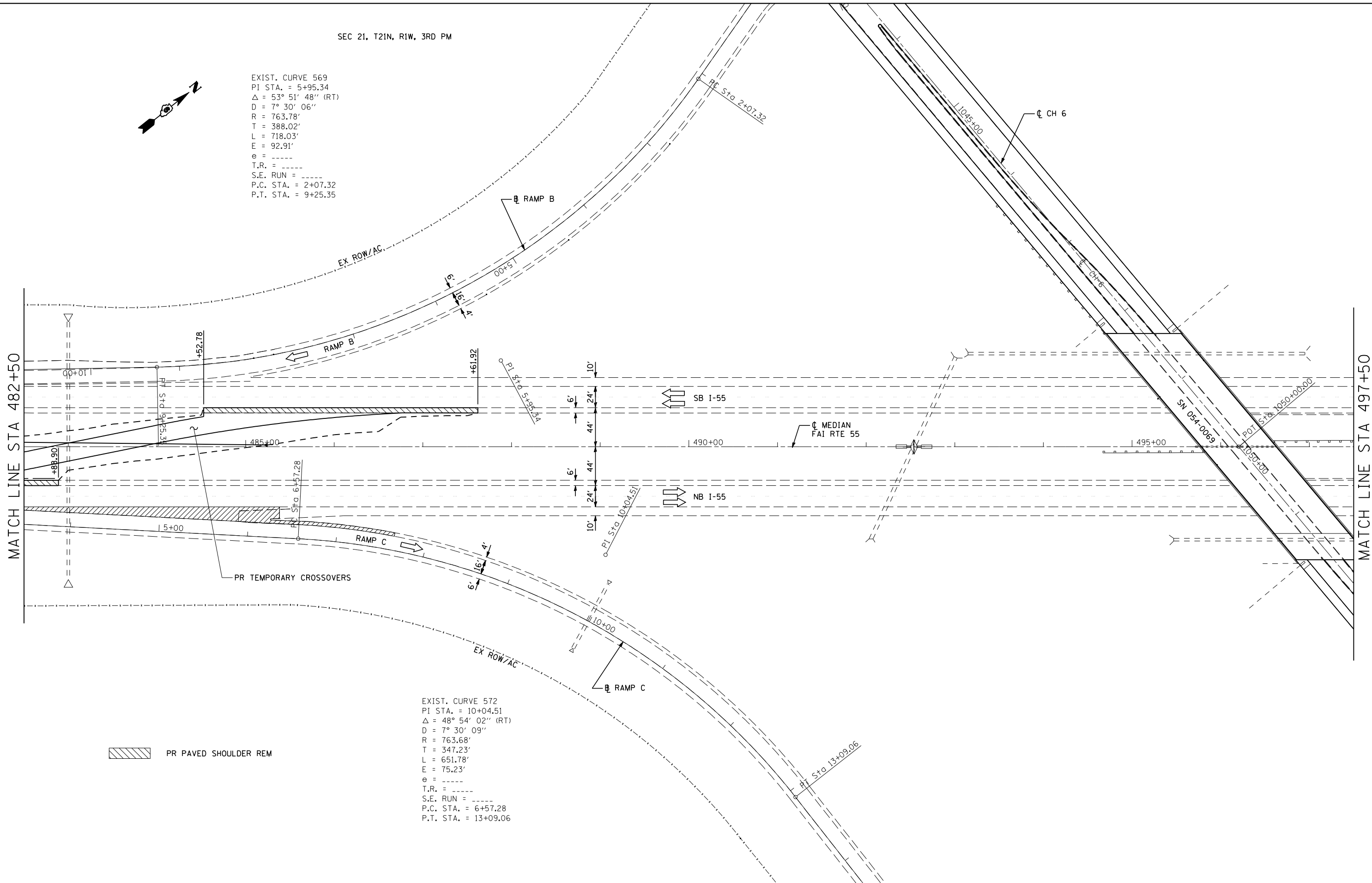
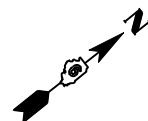


SEC 21, T21N, R1W, 3RD PM

EXIST. CURVE 569
 PI STA. = 5+95.34
 $\Delta = 53^\circ 51' 48''$ (RT)
 D = $7^\circ 30' 06''$
 R = 763.78'
 T = 388.02'
 L = 718.03'
 E = 92.91'
 e = -----
 T.R. = -----
 S.E. RUN = -----
 P.C. STA. = 2+07.32
 P.T. STA. = 9+25.35



EXIST. CURVE 572
 PI STA. = 10+04.51
 $\Delta = 48^\circ 54' 02''$ (RT)
 D = $7^\circ 30' 09''$
 R = 763.68'
 T = 347.23'
 L = 651.78'
 E = 75.23'
 e = -----
 T.R. = -----
 S.E. RUN = -----
 P.C. STA. = 6+57.28
 P.T. STA. = 13+09.06

PR PAVED SHOULDER REM



JOB = 2236.10
 FILE NAME = 0672E11-shr-plan-6568.dgn
 PLOT SCALE = 100.0000' / IN.
 PLOT DATE = 3/18/2013

DESIGNED - NAK
 DRAWN - TJD
 CHECKED - NAK
 DATE - 3/3/2011

REVISED -
 REVISED -
 REVISED -
 REVISED -

STATE OF ILLINOIS
 DEPARTMENT OF TRANSPORTATION

I-55 PLAN
 SN 054-0065, 0066, 0067, 0068
 SCALE: SHEET NO. 5 OF 6 SHEETS STA. 482+50 TO STA. 497+50

F.A.I. RTE.	SECTION	COUNTY	TOTAL SHEETS	SHEET NO.
55	D6 LOGAN CO BR 2011-1	LOGAN	429	94
FED. ROAD DIST. NO.			ILLINOIS FED. AID PROJECT	
			CONTRACT NO. 72E11	