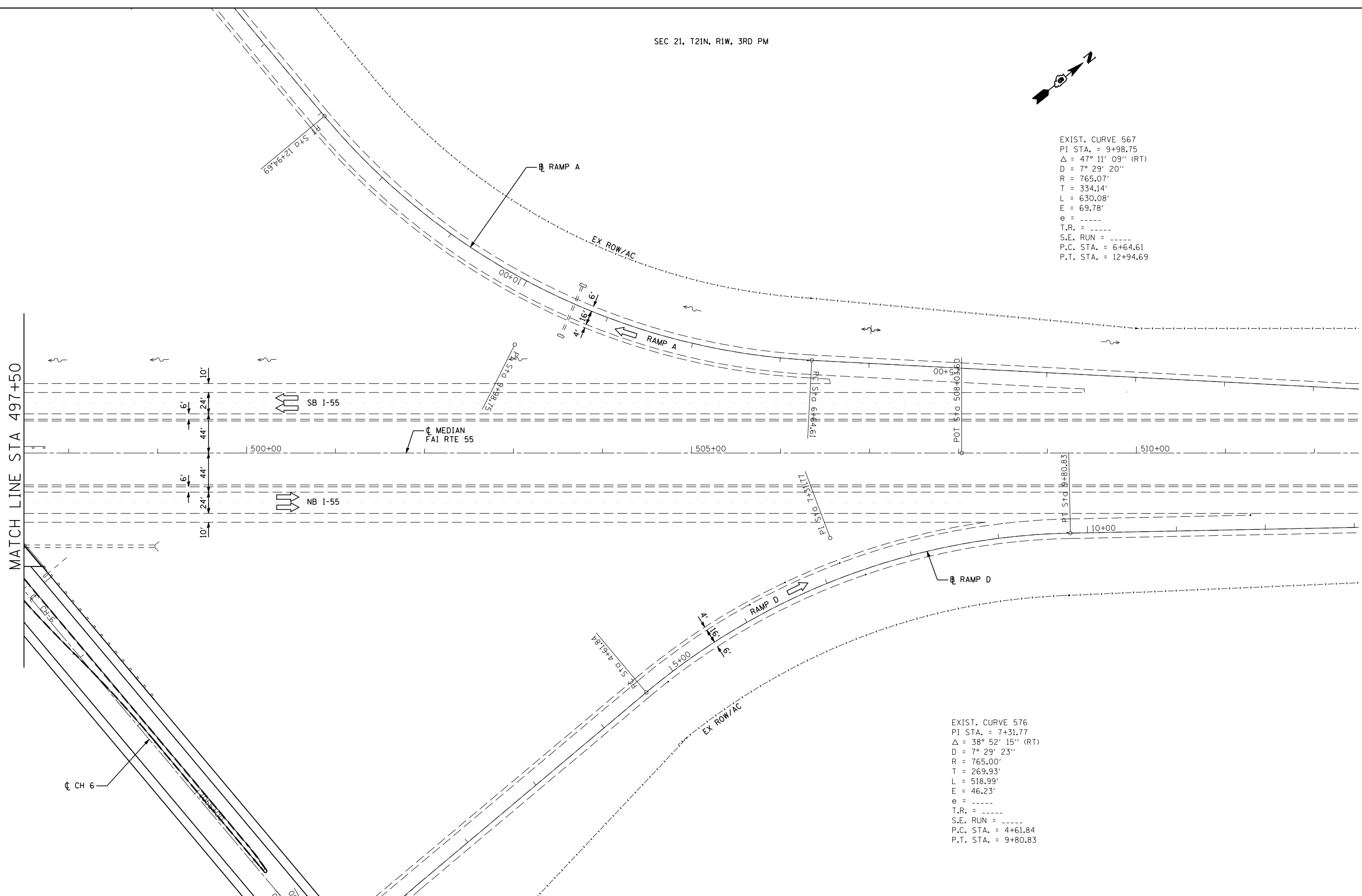


EXIST. CURVE 567
 PI STA. = 9+98.75
 Δ = 47° 11' 09" (RT)
 D = 7° 29' 20"
 R = 765.07'
 T = 334.14'
 L = 630.08'
 E = 69.78'
 e = -----
 T.R. = -----
 S.E. RUN = -----
 P.C. STA. = 6+64.61
 P.T. STA. = 12+94.69

EXIST. CURVE 576
 PI STA. = 7+31.77
 Δ = 38° 52' 15" (RT)
 D = 7° 29' 23"
 R = 765.00'
 T = 269.93'
 L = 518.99'
 E = 46.23'
 e = -----
 T.R. = -----
 S.E. RUN = -----
 P.C. STA. = 4+61.84
 P.T. STA. = 9+80.83

MATCH LINE STA 497+50



JOB = 2236.10
 FILE NAME = D672E11-shr-plan-6568.dgn
 PLOT SCALE = 100.0000 "/ IN.
 PLOT DATE = 3/18/2013

DESIGNED - NAK
 DRAWN - TJD
 CHECKED - NAK
 DATE - 3/3/2011

REVISED -
 REVISED -
 REVISED -
 REVISED -

**STATE OF ILLINOIS
 DEPARTMENT OF TRANSPORTATION**

**I-55 PLAN
 SN 054-0065, 0066, 0067, 0068**

SCALE: SHEET NO. 6 OF 6 SHEETS STA. 497+50 TO STA. 512+50

F.A.I. RTE.	SECTION	COUNTY	TOTAL SHEETS	SHEET NO.
55	D6 LOGAN CO BR 2011-1	LOGAN	429	95
CONTRACT NO. 72E11				
FED. ROAD DIST. NO.		ILLINOIS FED. AID PROJECT		