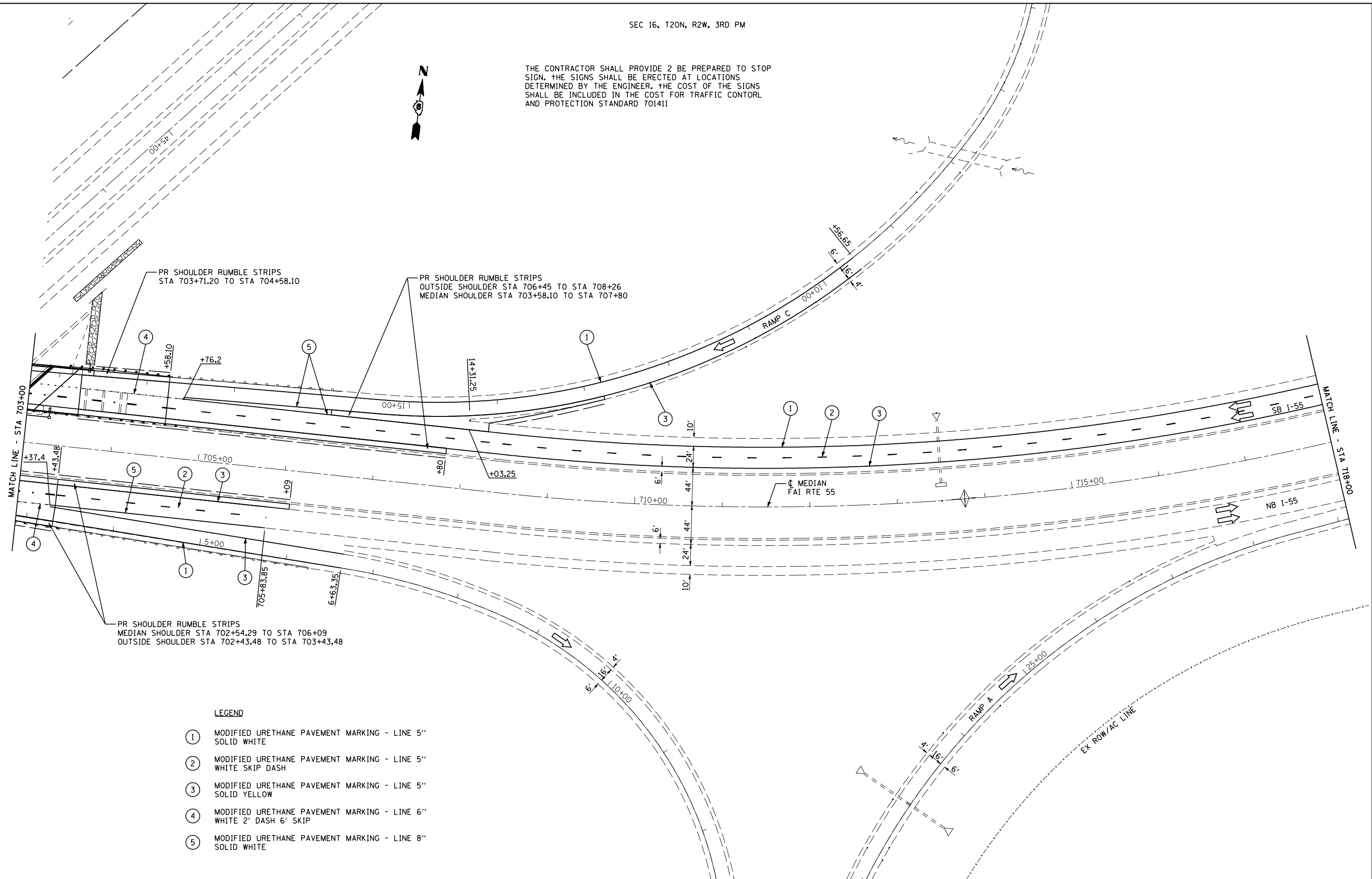


THE CONTRACTOR SHALL PROVIDE 2 BE PREPARED TO STOP SIGN. THE SIGNS SHALL BE ERECTED AT LOCATIONS DETERMINED BY THE ENGINEER. THE COST OF THE SIGNS SHALL BE INCLUDED IN THE COST FOR TRAFFIC CONTROL AND PROTECTION STANDARD 701411



PR SHOULDER RUMBLE STRIPS
STA 703+71.20 TO STA 704+58.10

PR SHOULDER RUMBLE STRIPS
OUTSIDE SHOULDER STA 706+45 TO STA 708+26
MEDIAN SHOULDER STA 703+58.10 TO STA 707+80

PR SHOULDER RUMBLE STRIPS
MEDIAN SHOULDER STA 702+54.29 TO STA 706+09
OUTSIDE SHOULDER STA 702+43.48 TO STA 703+43.48

LEGEND

- ① MODIFIED URETHANE PAVEMENT MARKING - LINE 5" SOLID WHITE
- ② MODIFIED URETHANE PAVEMENT MARKING - LINE 5" WHITE SKIP DASH
- ③ MODIFIED URETHANE PAVEMENT MARKING - LINE 5" SOLID YELLOW
- ④ MODIFIED URETHANE PAVEMENT MARKING - LINE 6" WHITE 2' DASH 6' SKIP
- ⑤ MODIFIED URETHANE PAVEMENT MARKING - LINE 8" SOLID WHITE



JOB = 2265.5
FILE NAME = D672E11-sh1-S3-6061.dgn
PLOT SCALE = 100.0000' / IN.
PLOT DATE = 3/18/2013

DESIGNED - NAK
DRAWN - TJD
CHECKED - NAK
DATE - 3/4/2011

REVISED -
REVISED -
REVISED -
REVISED -

**STATE OF ILLINOIS
DEPARTMENT OF TRANSPORTATION**

FINAL PHASE
SN 054-0060 & SN 054-0061
SCALE: SHEET NO. 3 OF 4 SHEETS STA. 703+00 TO STA. 718+00

F.A.I. RTE.	SECTION	COUNTY	TOTAL SHEETS	SHEET NO.
55	D6 LOGAN CO BR 2011-1	LOGAN	429	126
FED. ROAD DIST. NO. ILLINOIS FED. AID PROJECT			CONTRACT NO. 72E11	