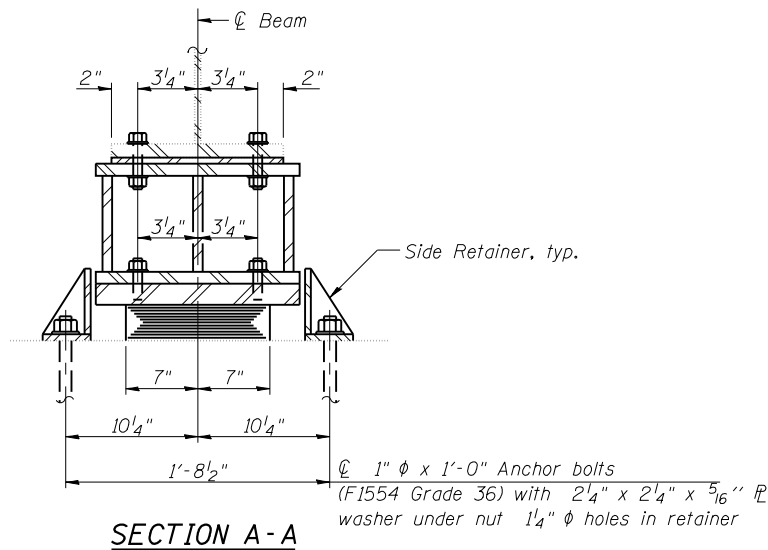
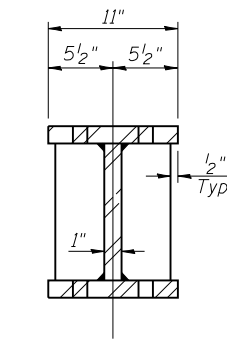


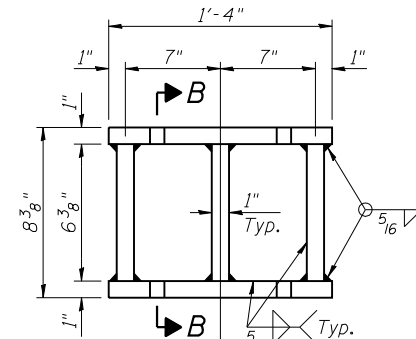
ELEVATION AT ABUT.



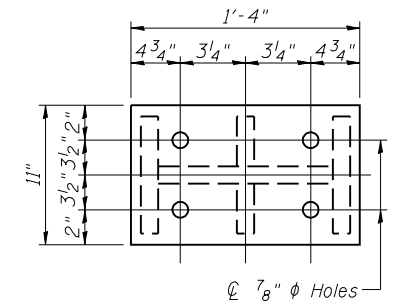
SECTION A-A



SECTION B-B



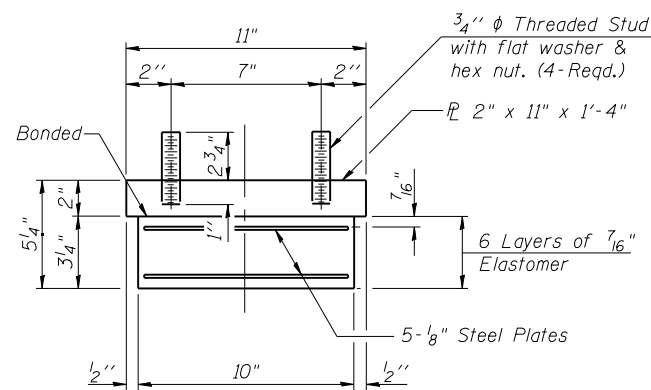
ELEVATION



PLAN - TOP & BOTTOM

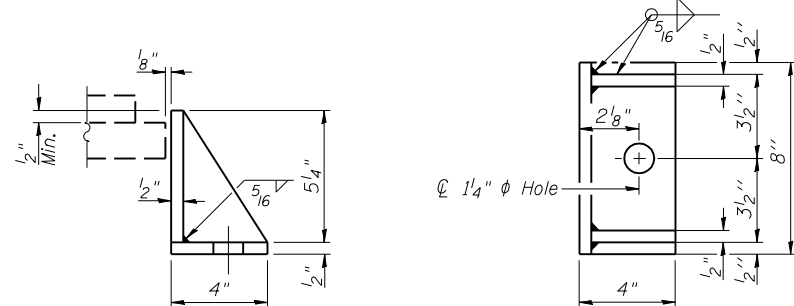
STEEL EXTENSION

TYPE I ELASTOMERIC EXP. BRG.



BEARING ASSEMBLY

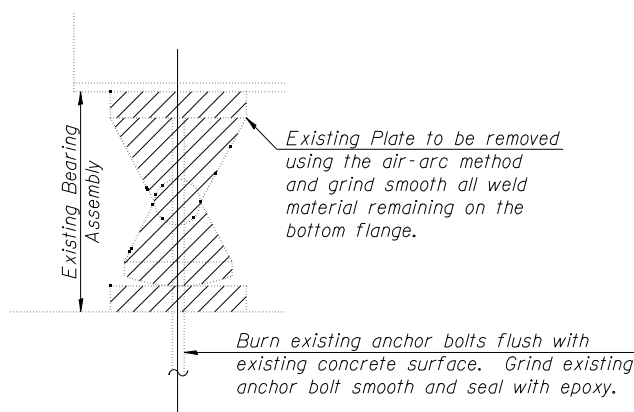
Note: Shim plates shall not be placed under Bearing Assembly.



SIDE RETAINER

Equivalent rolled angle with stiffeners will be allowed in lieu of welded plates.

Notes:
 Anchor bolts shall be ASTM F1554 all-thread (or an Engineer-approved alternate material) of the grade(s) and diameter(s) specified. The corresponding specified grade of AASHTO M314 anchor bolts may be used in lieu of ASTM F1554.
 Drilled and set anchor bolts shall be installed according to Article 521.06 of the Standard Specifications.
 Side retainers and shim plates required for the elastomeric bearing assembly shall be included in the cost of Elastomeric Bearing Assembly, Type I.
 Steel extensions shall be paid for as Furnishing and Erecting Structural Steel.
 The cost of field drilling holes in bottom flange of existing beams is included in Elastomeric Bearing Assembly, Type I.



EXISTING BEARING REMOVAL DETAIL

Cost Included with "Jack and Remove Existing Bearings"

INTERIOR GIRDER REACTION TABLE

Location	Abutments
R _D (K) (steel only)	17.2
R _L (K)	35.9
R _{IMP} (K)	10.4
R _{TOTAL} (K)	105.7
Min. Jack Capacity (T)	13

Min. Jack Capacity = $R_D + \frac{1}{2}(R_L + R_{IMP})$

**TWO STRUCTURES
BILL OF MATERIAL**

Item	Unit	Total
Elastomeric Bearing Assembly, Type I	Each	24
Anchor Bolts, 1"	Each	48
Furnishing and Erecting Structural Steel	Pound	4230
Jack and Remove Existing Bearings	Each	24

I-2E-1

1-27-12



JOB = 2276.3
 FILE = 0540057_0058-BearingDet.dgn
 DATE = 2/11/2013

DESIGNED - AAN	REVISED -
CHECKED - MDC	REVISED -
DRAWN - SJS	REVISED -
CHECKED - MDC	REVISED -

**STATE OF ILLINOIS
DEPARTMENT OF TRANSPORTATION**

**BEARING DETAILS
STRUCTURE NO. 054-0057 (NB) & 054-0058 (SB)**

SHEET NO. 18 OF 31 SHEETS

F.A.I. RTE.	SECTION	COUNTY	TOTAL SHEETS	SHEET NO.
55	D6 LOGAN CO BR 2011-1	LOGAN	429	217
			CONTRACT NO. 72E11	

ILLINOIS FED. AID PROJECT