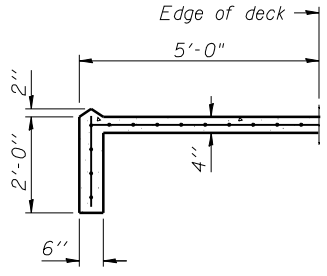
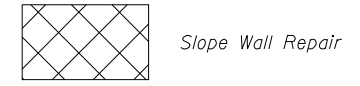


SECTION THRU
SLOPEWALL



SECTION A-A

LEGEND



BILL OF MATERIAL

ITEM	UNIT	TOTAL
Slope Wall Repair	50 YD	109

Notes:
 Slope wall shall be reinforced with welded wire fabric, 6 in. x 6 in., W4.0 x W4.0, weighing 58 lbs. per 100 sq. ft.
 Do not pour slope wall at abutments until new wingwalls are constructed.



JOB = 2276.3
 FILE = 0540057_0058-SN0057SlopeWalls.dgn
 DATE = 2/11/2013

DESIGNED - AAN
 CHECKED - MDC
 DRAWN - SJS
 CHECKED - MDC

REVISED -
 REVISED -
 REVISED -
 REVISED -

STATE OF ILLINOIS
 DEPARTMENT OF TRANSPORTATION

EAST SLOPE WALL REPAIRS
 STRUCTURE NO. 054-0057 (NB) & 054-0058 (SB)

SHEET NO. 29 OF 31 SHEETS

F.A.I. RTE.	SECTION	COUNTY	TOTAL SHEETS	SHEET NO.
55	D6 LOGAN CO BR 2011-1	LOGAN	429	228
CONTRACT NO. 72E11				ILLINOIS FED. AID PROJECT