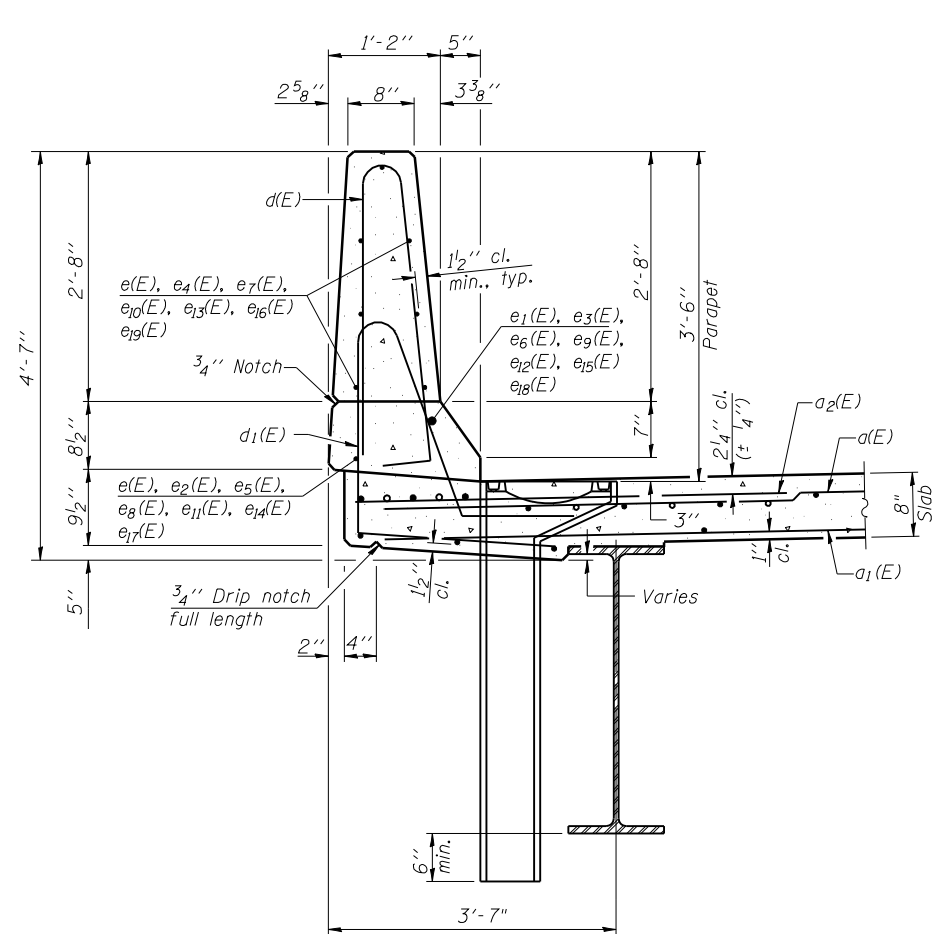


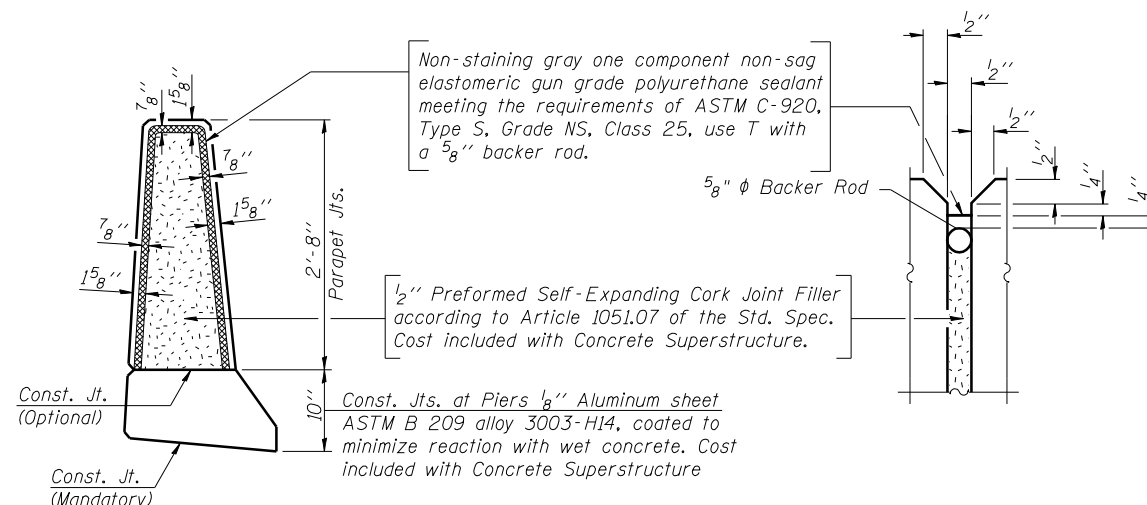
**TWO SUPERSTRUCTURES
BILL OF MATERIAL**

Bar	No.	Size	Length	Shape
a(E)	2180	#5	21'-0"	—
a ₁ (E)	1334	#5	20'-6"	—
a ₂ (E)	4229	#6	6'-6"	—
a ₃ (E)	18	#7	9'-11"	—
a ₄ (E)	8	#7	24'-0"	—
a ₅ (E)	16	#7	28'-6"	—
a ₆ (E)	2040	#5	14'-9"	—
a ₇ (E)	1246	#5	18'-9"	—
a ₈ (E)	3	#5	2'-6"	—
a ₉ (E)	3	#5	3'-6"	—
a ₁₀ (E)	3	#5	4'-6"	—
a ₁₁ (E)	3	#5	5'-6"	—
a ₁₂ (E)	182	#5	6'-6"	—
a ₁₃ (E)	181	#5	7'-6"	—
a ₁₄ (E)	181	#5	8'-6"	—
a ₁₅ (E)	181	#5	9'-6"	—
a ₁₆ (E)	473	#5	10'-6"	—
a ₁₇ (E)	429	#5	11'-6"	—
a ₁₈ (E)	361	#5	12'-6"	—
a ₁₉ (E)	383	#5	13'-6"	—
a ₂₀ (E)	361	#5	14'-6"	—
a ₂₁ (E)	239	#5	15'-6"	—
a ₂₂ (E)	109	#5	16'-6"	—
a ₂₃ (E)	109	#5	17'-6"	—
a ₂₄ (E)	109	#5	18'-6"	—
a ₂₅ (E)	39	#5	19'-6"	—
a ₂₆ (E)	35	#5	13'-0"	—
a ₂₇ (E)	1	#7	19'-3"	—
a ₂₈ (E)	1	#7	13'-3"	—
a ₂₉ (E)	12	#5	4'-11"	—
a ₃₆ (E)	65	#5	1'-6"	—
b(E)	1546	#5	29'-6"	—
b ₁ (E)	579	#6	32'-7"	—
b ₂ (E)	1409	#5	28'-1"	—
b ₃ (E)	305	#5	30'-0"	—
b ₄ (E)	271	#5	28'-7"	—
d(E)	2124	#5	6'-10"	—
d ₁ (E)	2124	#5	8'-1"	—
e(E)	128	#4	19'-8"	—
e ₁ (E)	16	#8	19'-8"	—
e ₂ (E)	20	#4	27'-11"	—
e ₃ (E)	20	#8	30'-6"	—
e ₄ (E)	196	#4	18'-6"	—
e ₅ (E)	12	#4	25'-7"	—
e ₆ (E)	10	#8	32'-10"	—
e ₇ (E)	112	#4	17'-7"	—
e ₈ (E)	10	#4	28'-6"	—
e ₉ (E)	10	#8	31'-0"	—
e ₁₀ (E)	98	#4	18'-10"	—
e ₁₁ (E)	6	#4	26'-2"	—
e ₁₂ (E)	5	#8	33'-6"	—
e ₁₃ (E)	56	#4	18'-0"	—
e ₁₄ (E)	10	#4	27'-8"	—
e ₁₅ (E)	10	#8	30'-2"	—
e ₁₆ (E)	98	#4	18'-3"	—
e ₁₇ (E)	5	#4	29'-10"	—
e ₁₈ (E)	5	#8	32'-5"	—
e ₁₉ (E)	56	#4	17'-4"	—
x(E)	68	#5	9'-5"	—
x ₁ (E)	68	#5	4'-1"	—
Reinforcement Bars, Epoxy Coated		Pound	403,300	
Concrete Superstructure		Cu. Yds.	1610.2	
Bar Splicers		Each	3418	

Bars indicated thus 1 x 2-#8 etc. indicates 1 line of bars with 2 lengths per line.

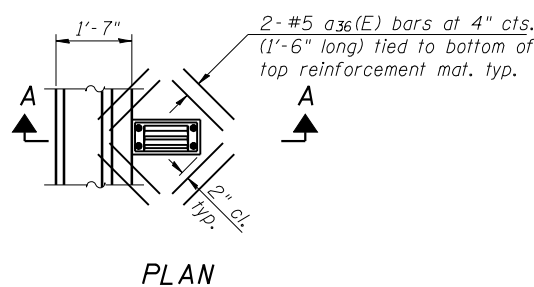


SECTION THRU PARAPET



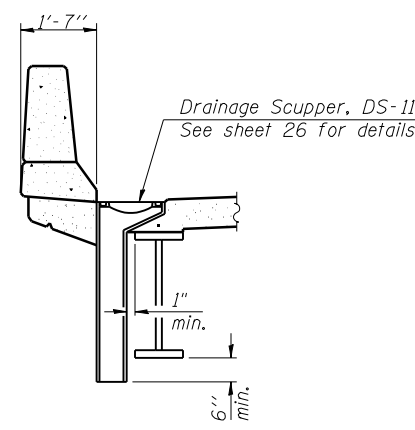
PARAPET JOINT DETAILS

Notes:
 Drains shall be located clear of all diaphragms.
 The exterior surfaces of the floor drains shall be painted with the finish coat as specified in the special provisions for Cleaning and Painting New Metal Structures. The exterior surfaces of the drains shall be cleaned according to the Society of Protective Coatings' Spec. SSPC-SP1 prior to painting.
 Fiberglass pipe shall conform to ASTM D 2996, with short-time rupture strength hoop tensile stress of 30,000 p.s.i. minimum.
 Galvanize clamping device according to AASHTO M232. Cost of clamping device and inserts is included with Floor Drains.

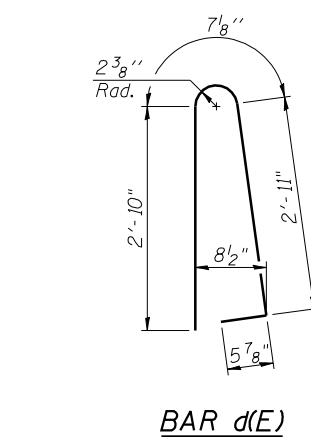


PLAN

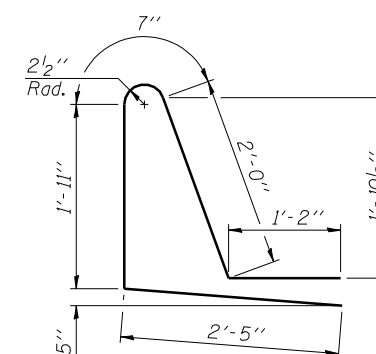
Note:
 Cut longitudinal reinforcement to clear drainage scuppers.



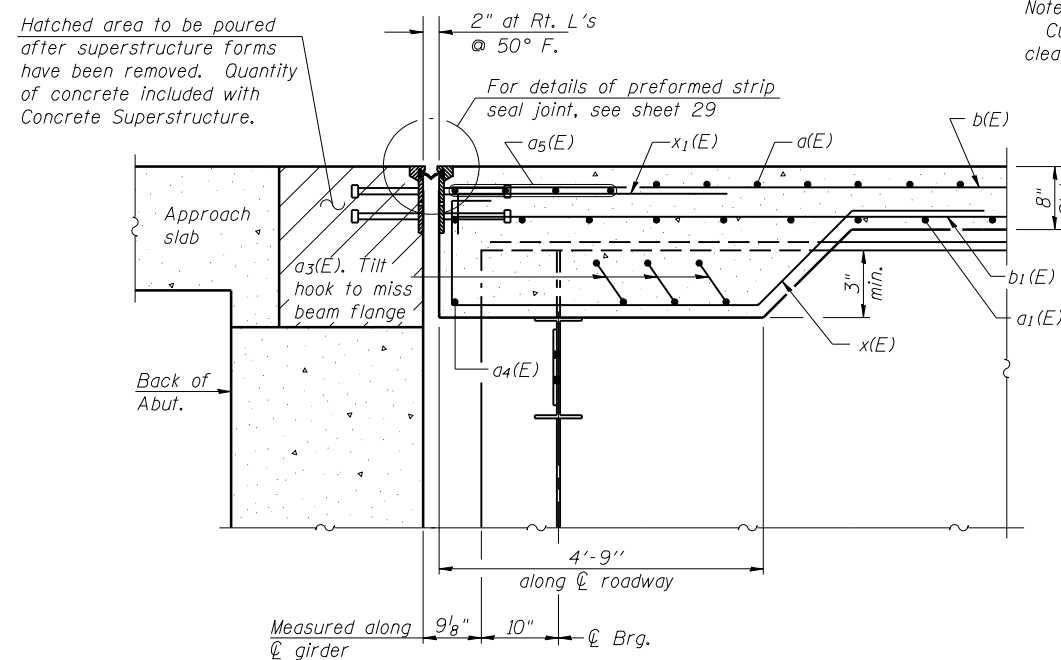
SECTION A-A



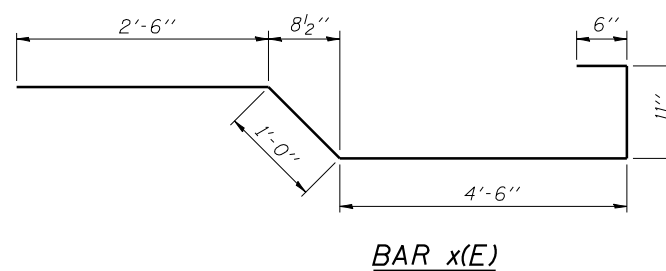
BAR d(E)



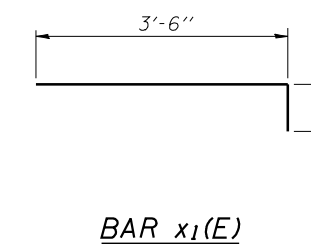
BAR d1(E)



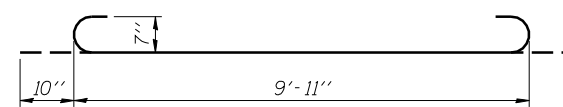
SECTION A-A



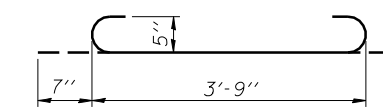
BAR x(E)



BAR x1(E)



a₃(E) BAR



a₂₉(E) BAR