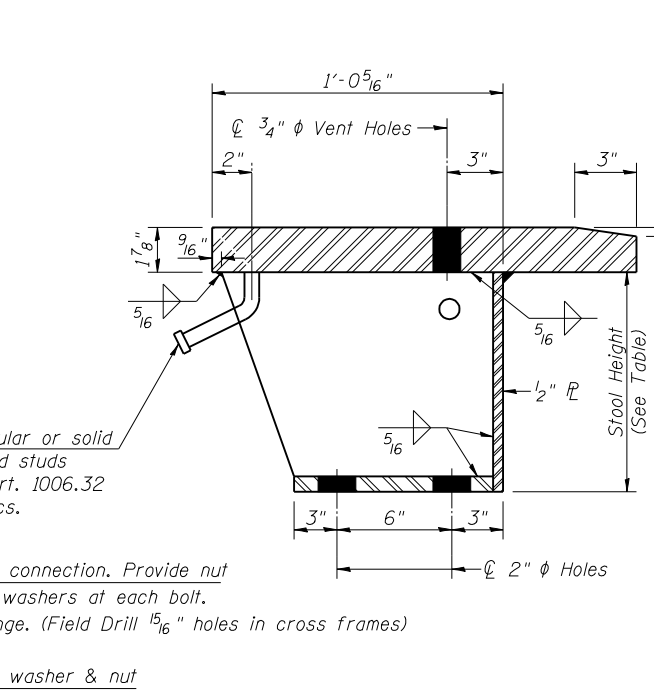
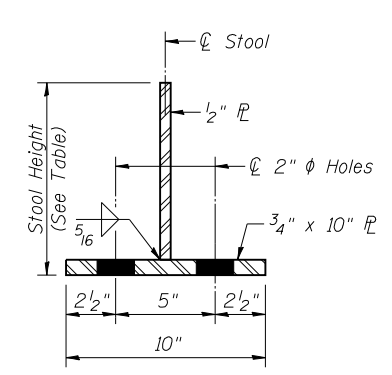


SECTION B-B

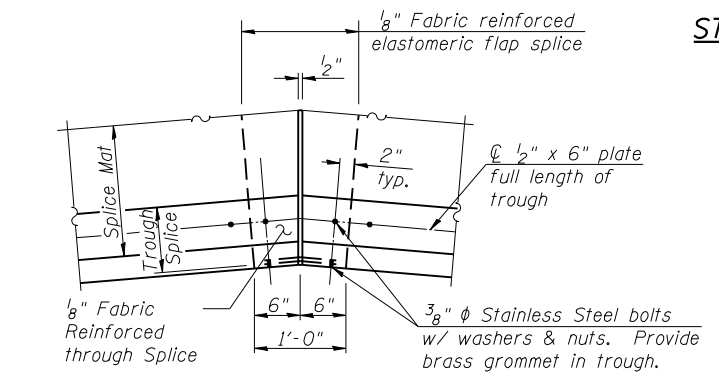
(At Right Angles to Bk. of Abut.)
Horizontal dimensions are at 50° F.



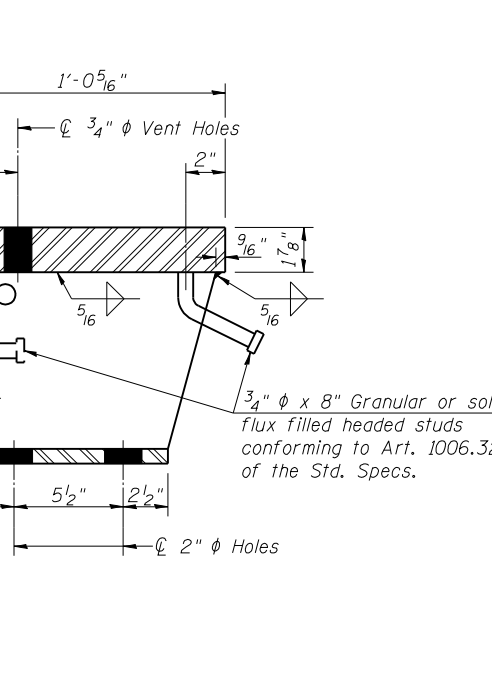
STOOLS DETAIL



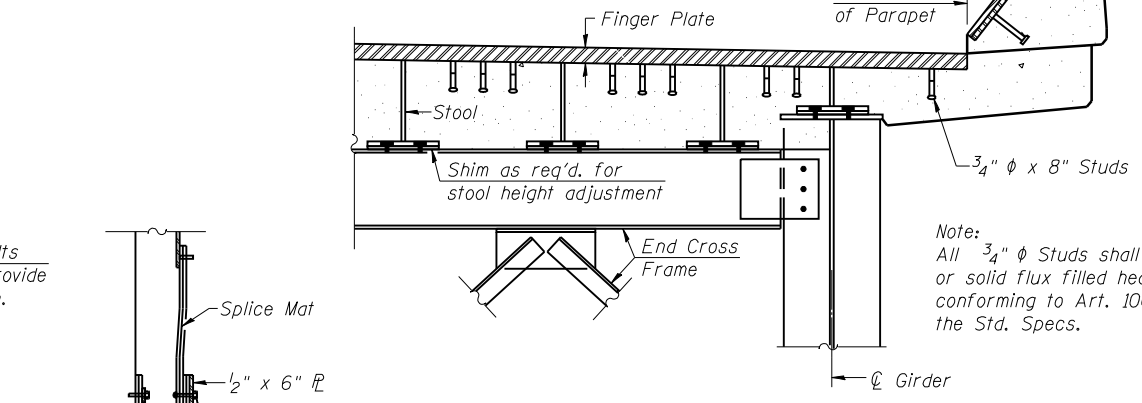
SECTION THRU STOOL



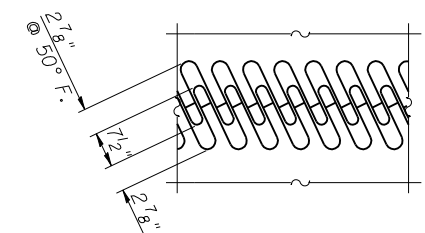
TROUGH SPLICE DETAIL



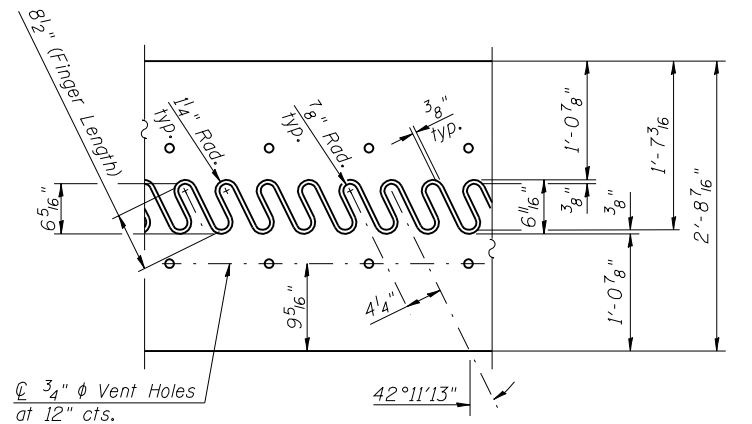
DETAIL 1



SECTION THRU TROUGH SPLICE

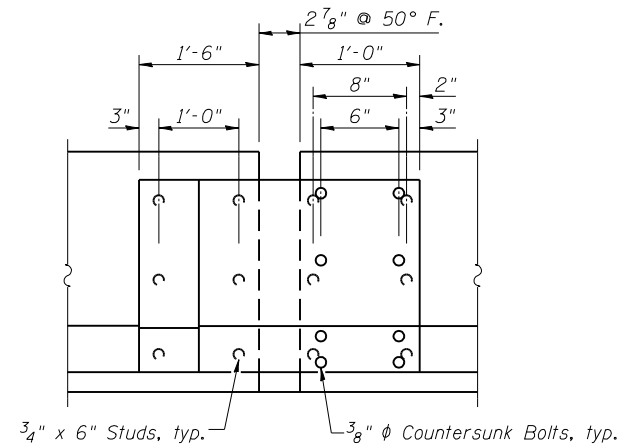


FINGER PLATE SETTING DIAGRAM

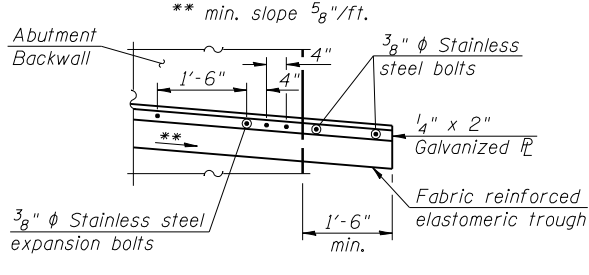


FLAME CUTTING DIAGRAM

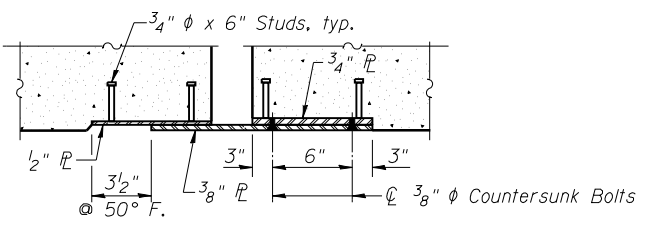
Cut from PL 1 7/8" x 2'-8 7/16" x 70'-8 1/8" (SB)
Cut from PL 1 7/8" x 2'-8 7/16" x 65'-5 3/4" (NB)



INSIDE ELEVATION OF PARAPET AT JOINT



END OF TROUGH DETAIL AT ABUTMENT



HORIZONTAL SECTION OF PARAPET AT JOINT

Note:
For stools supported by girders and cross frames provide 1/4" normal shim plus one 1/8" and one 1/16" shim for height adjustment.

BILL OF MATERIAL

ITEM	UNIT	TOTAL
Finger Plate Expansion Joint 4 1/4"	Foot	133
SN 054-0061 (E Abut. NB) = 64 Foot		
SN 054-0060 (E Abut. SB) = 69 Foot		