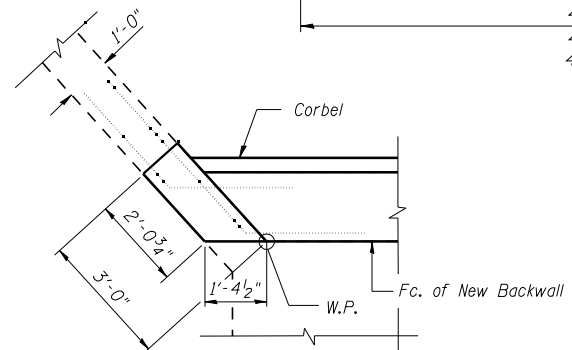
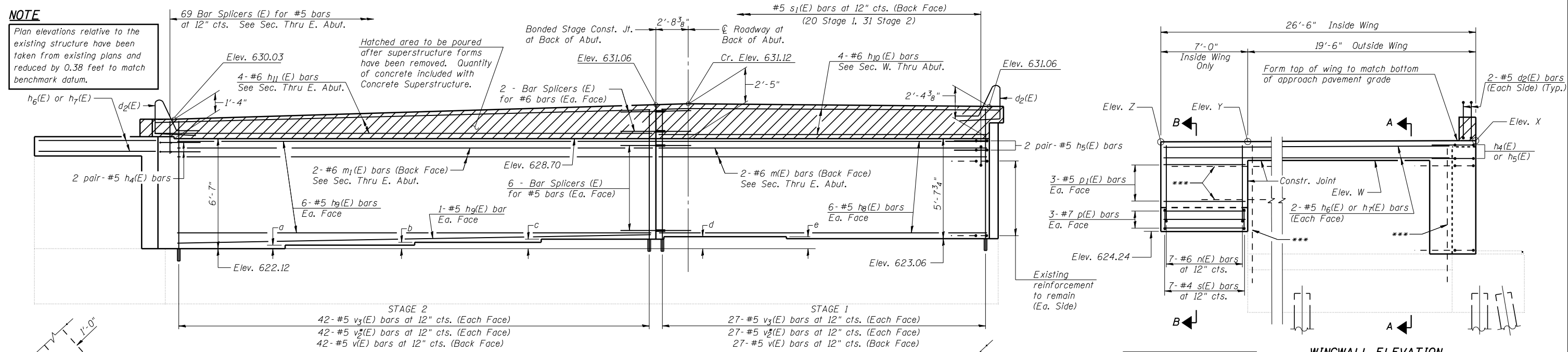


NOTE
Plan elevations relative to the existing structure have been taken from existing plans and reduced by 0.38 feet to match benchmark datum.



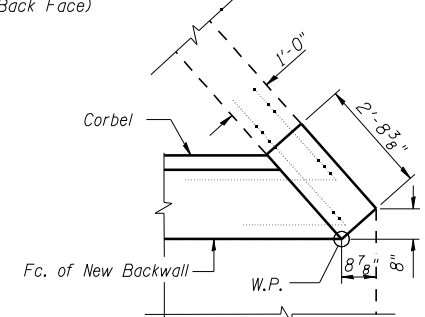
CORNER DETAIL G
(hatch block above not shown)

ELEVATION
(Looking East - E. Abut. - S.B.)

TABLE OF EXISTING STEP HEIGHTS

	a	b	c	d	e
East Abutment (S.B.)	3 3/8"	6 7/8"	9 5/8"	12"	11 1/4"

***Clean and incorporate existing bars into new construction. Trim as required.



CORNER DETAIL H
(hatch block above not shown)

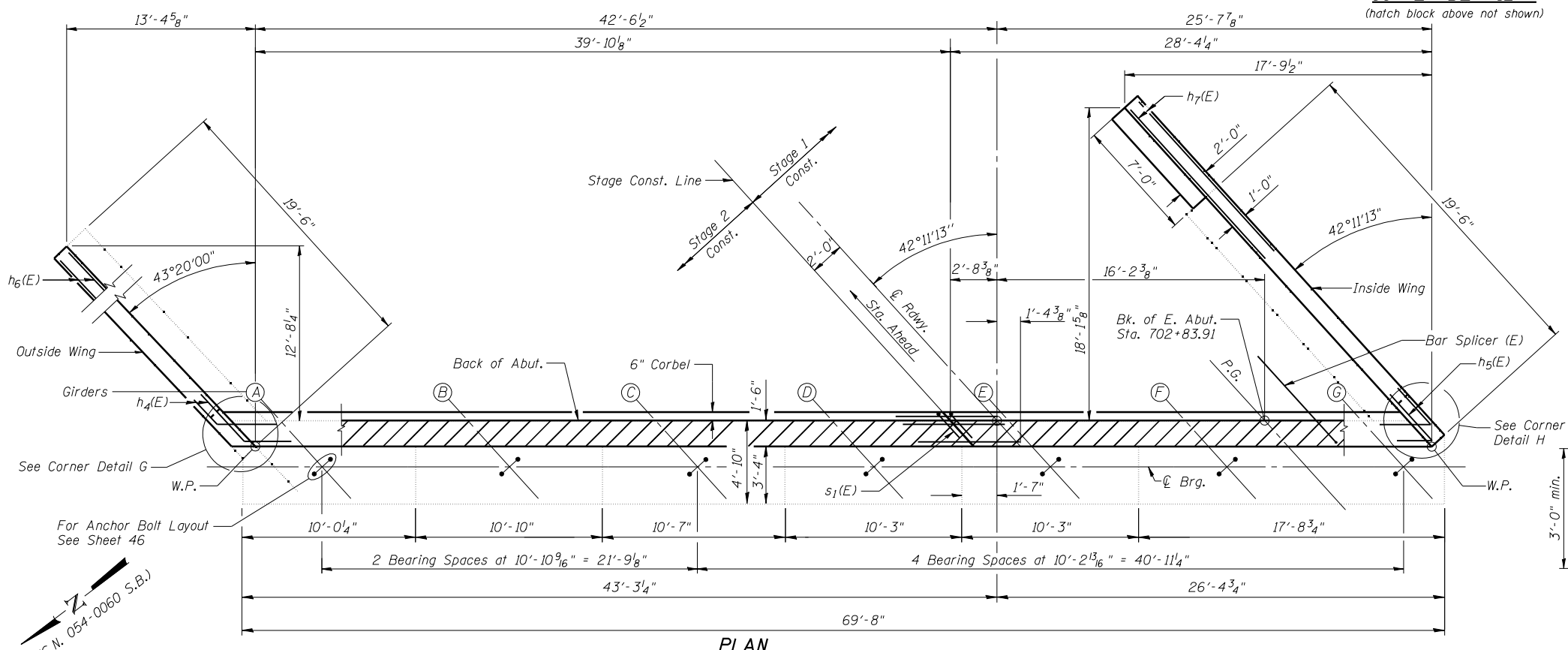
	East Wing	Outside Wing
Elev. W	629.13	628.12
X	629.81	628.78
Y	629.55	628.65
Z	629.43	-

WINGWALL ELEVATION

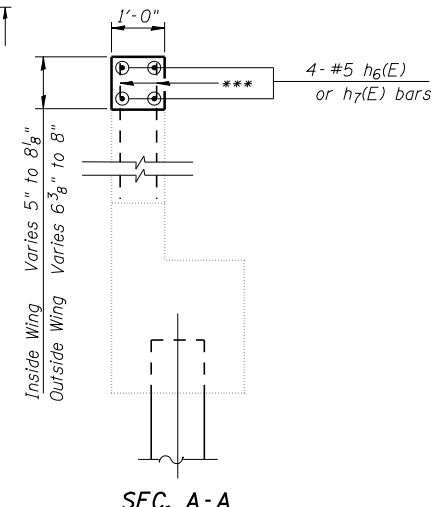
ABUTMENT BILL OF MATERIAL

Bar	No.	Size	Length	Shape
d2(E)	4	#5	7'-11"	L
h4(E)	4	#5	5'-0"	—
h5(E)	4	#5	5'-0"	—
h6(E)	4	#5	19'-2"	—
h7(E)	4	#5	25'-3"	—
h8(E)	12	#5	26'-9"	—
h9(E)	14	#5	41'-0"	—
h10(E)	4	#6	26'-10"	—
h11(E)	4	#6	41'-0"	—
m(E)	2	#6	26'-10"	—
m1(E)	2	#6	41'-0"	—
n(E)	7	#6	9'-1"	—
p(E)	6	#7	6'-8"	—
p1(E)	6	#5	6'-8"	—
s(E)	7	#4	7'-5"	—
s1(E)	51	#5	4'-2"	C
v(E)	69	#5	3'-9"	—
v2(E)	138	#5	6'-3"	—
v3(E)	138	#5	3'-2"	—
Structure Excavation	Cu. Yd.		187	
Concrete Structures	Cu. Yd.		28.3	
Reinforcement Bars, Epoxy Coated	Pound		3910	
Bar Splicers	Each		87	
Concrete Sealer	Sq. Ft.		426	

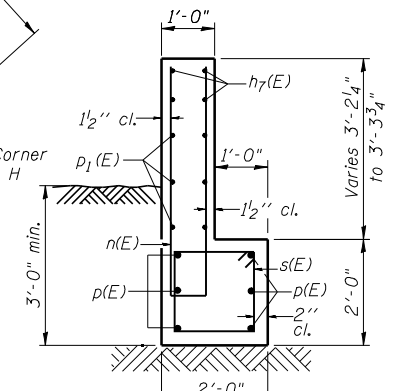
Notes:
All bars designated with an asterisk (ex. v2(E)) shall be epoxy grouted in accordance with Section 584 of the Standard Specifications. Minimum embedment = 9". Locate bars to miss existing reinforcement.
Existing wingwall reinforcement shall be cleaned and incorporated into the new construction. Cost included with Concrete Removal.
Existing vertical bars in backwall shall be cut off and covered with a layer of epoxy. Cost included with Concrete Removal.
Concrete Sealer shall be applied to the front face of the backwall.
The s1(E) bars shall be placed parallel to the roadway. Spacing for these bars shall be at right angles to roadway.
See Sheet 22 for point block details at hatch block.



PLAN
(East Abutment - S.B.)



SEC. A-A



SEC. B-B



JOB = 2265.2
FILE = 0540060.0061-72E11-42-43-Abut-SB.dgn
DATE = 3/8/2013

DESIGNED - AAN
CHECKED - MDC
DRAWN - SJS
CHECKED - TSH

REVISED -
REVISED -
REVISED -
REVISED -

**STATE OF ILLINOIS
DEPARTMENT OF TRANSPORTATION**

**EAST ABUTMENT DETAILS
STRUCTURE NO. 054-0060 (SB)**

SHEET NO. 43 OF 53 SHEETS

F.A.I. RTE.	SECTION	COUNTY	TOTAL SHEETS	SHEET NO.
55	D6 LOGAN CO BR 2011-1	LOGAN	429	273
				CONTRACT NO. 72E11

ILLINOIS FED. AID PROJECT