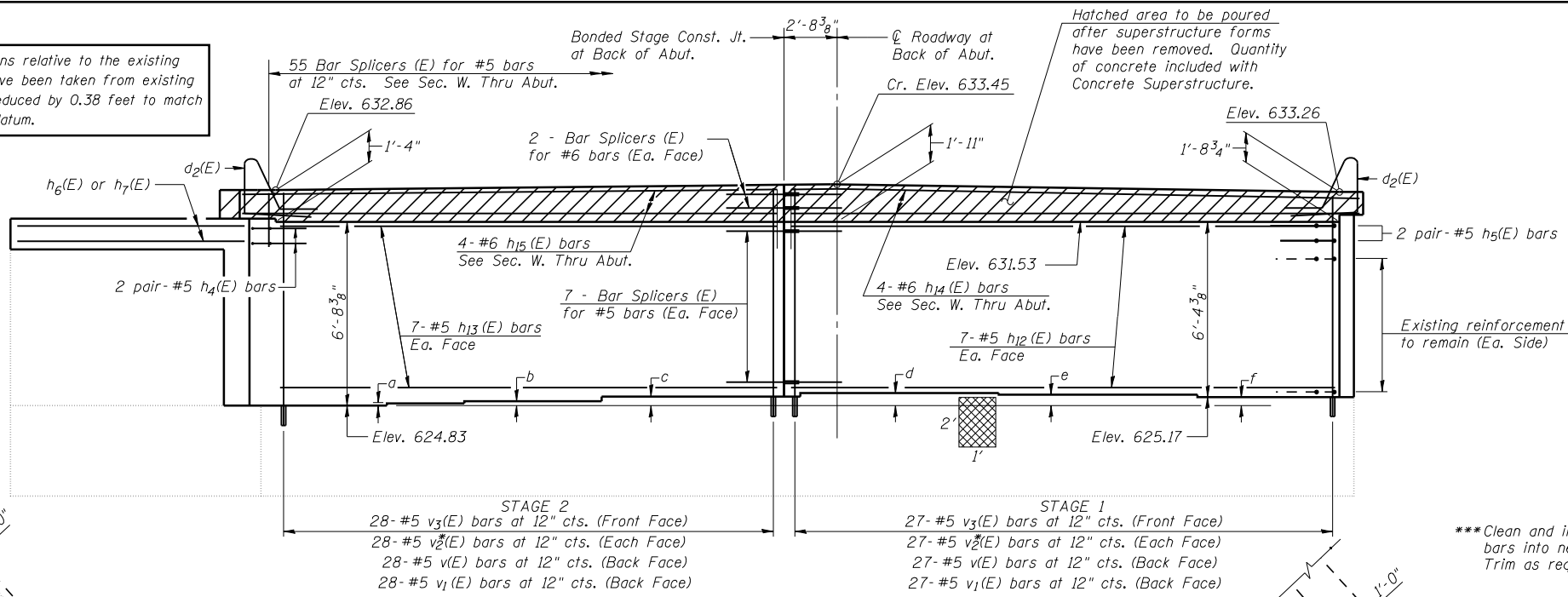


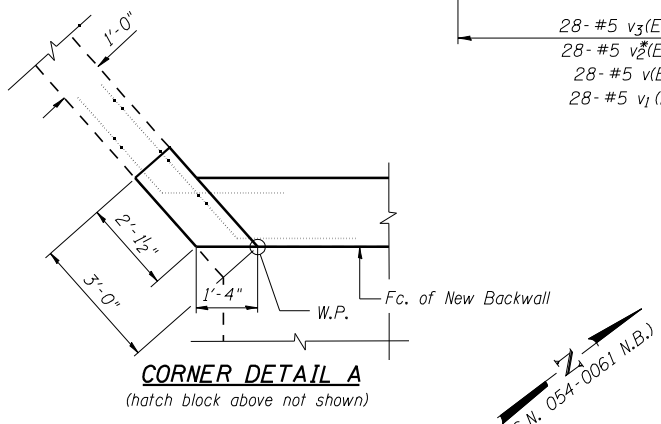
NOTE
Plan elevations relative to the existing structure have been taken from existing plans and reduced by 0.38 feet to match benchmark datum.



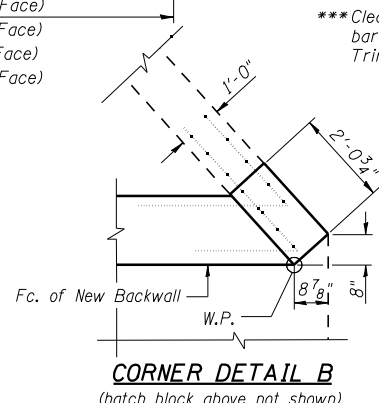
ELEVATION
(Looking West - W. Abut. - N.B.)

TABLE OF EXISTING STEP HEIGHTS

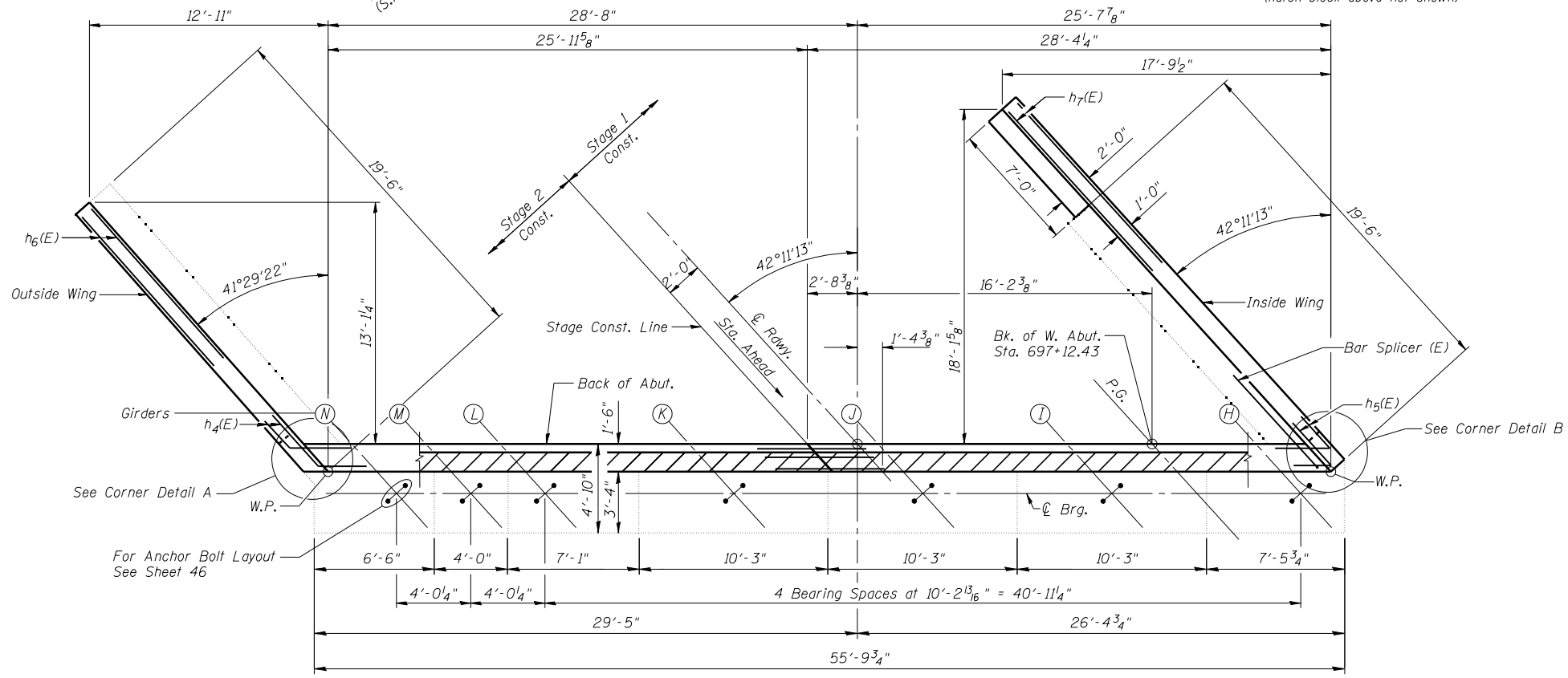
	a	b	c	d	e	f
West Abutment (N.B.)	1"	2 1/8"	4 1/4"	5 7/8"	5 1/8"	4"



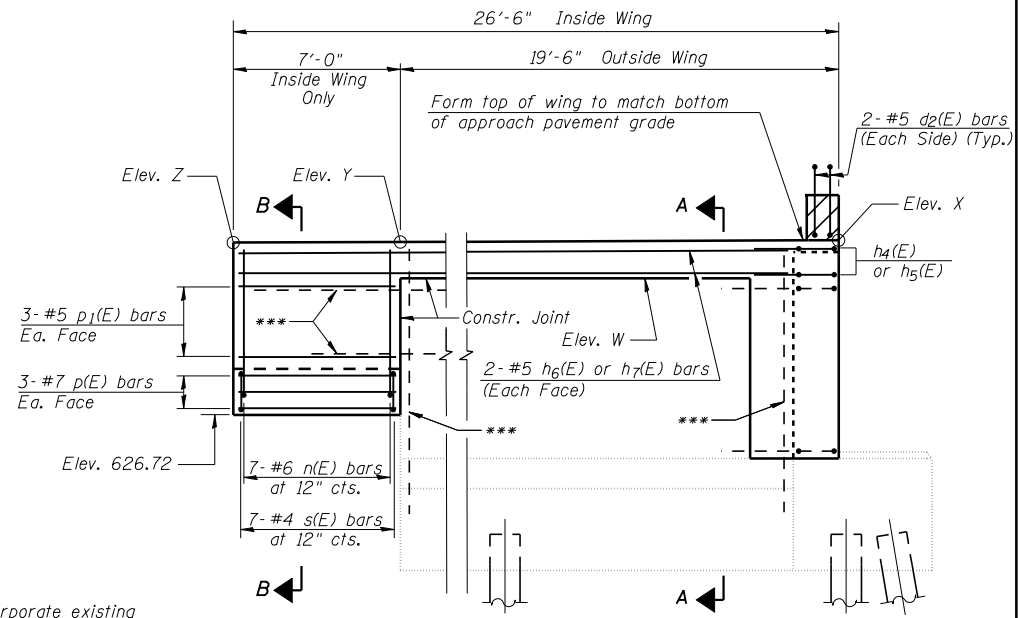
CORNER DETAIL A
(hatch block above not shown)



CORNER DETAIL B
(hatch block above not shown)



PLAN
(West Abutment - N.B.)

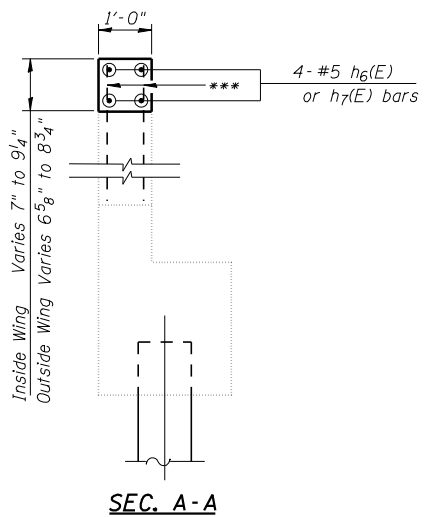


WINGWALL ELEVATION

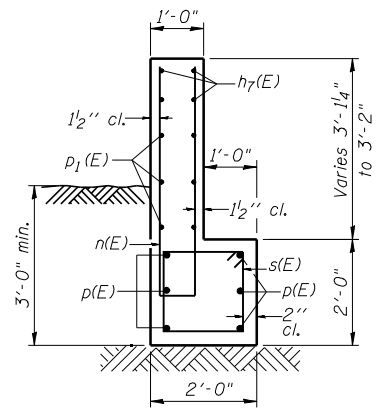
	West Abut. - N.B.	
Elev.	Inside Wing	Outside Wing
W	631.24	630.88
X	632.01	631.61
Y	631.88	631.43
Z	631.82	-

ABUTMENT BILL OF MATERIAL

Bar	No.	Size	Length	Shape
d2(E)	4	#5	7'-11"	⌒
h4(E)	4	#5	5'-0"	⌒
h5(E)	4	#5	5'-0"	⌒
h6(E)	4	#5	19'-2"	—
h7(E)	4	#5	25'-3"	—
h12(E)	14	#5	26'-9"	—
h13(E)	14	#5	27'-0"	—
h14(E)	4	#6	27'-5"	—
h15(E)	4	#6	27'-2"	—
n(E)	7	#6	9'-1"	⌒
p(E)	6	#7	6'-8"	—
p1(E)	6	#5	6'-8"	—
s(E)	7	#4	7'-5"	⌒
v(E)	55	#5	3'-9"	⌒
v1(E)	55	#5	4'-6"	⌒
v2(E)	110	#5	6'-3"	⌒
v3(E)	55	#5	3'-2"	⌒
Structure Excavation		Cu. Yd.	149	
Concrete Structures		Cu. Yd.	23.6	
Reinforcement Bars, Epoxy Coated		Pound	3000	
Bar Splicers		Each	73	
Concrete Sealer		Sq. Ft.	365	
Structure Repair of Concrete (Depth Equal or Less than 5")		Sq. Ft.	2	



SEC. A-A



SEC. B-B

Notes:
All bars designated with an asterisk (ex: v2*(E)) shall be epoxy grouted in accordance with Section 584 of the Standard Specifications. Minimum embedment = 9". Locate bars to miss existing reinforcement.
Existing wingwall reinforcement shall be cleaned and incorporated into the new construction. Cost included with Concrete Removal.
Existing vertical bars in backwall shall be cut off and covered with a layer of epoxy. Cost included with Concrete Removal.
Concrete Sealer shall be applied to the front face of the backwall.
See Sheet 22 for point block details at hatch block.

Denotes Structure Repair of Concrete (Depth Equal or Less than 5")