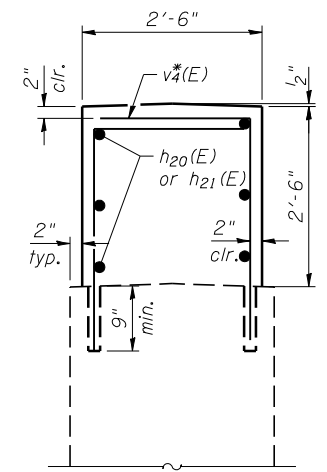
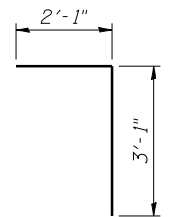


PIER 2



SECTION A-A



BAR v<sub>4</sub>(E)

TWO (2) PIERS  
TOTAL BILL OF MATERIAL

Bar	No.	Size	Length	Shape
v <sub>4</sub> *(E)	132	#5	5'-2"	L
h <sub>20</sub> (E)	18	#5	11'-0"	—
h <sub>21</sub> (E)	18	#5	9'-9"	—
Reinforced Bars Epoxy Coated			Pound	1110
Concrete Structures			Cu. Yd.	15.1

Notes:  
All bars designated with an asterisk (ex: v<sub>4</sub>\*(E)) shall be epoxy grouted in accordance with Section 584 of the Standard Specifications. Minimum embedment = 9". Locate bars to miss existing reinforcement.