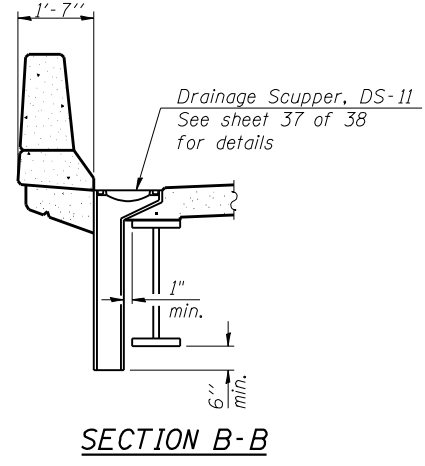


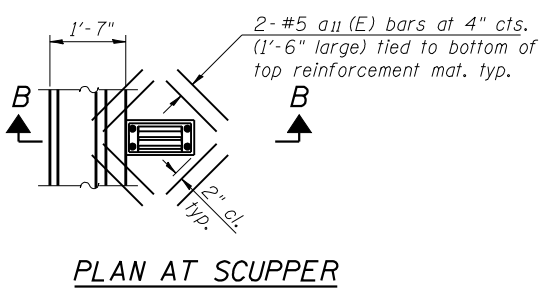
DIAPHRAGM ELEVATION AT ABUTMENT

(Looking South at South Abutment S.B. Lanes North Abut. Similar)
 (Looking North at North Abutment N.B. Lanes South Abut. Similar)

- * Cut to fit at Stage line.
- **Cost included with Concrete Superstructure.
- ***Prior to Grinding.

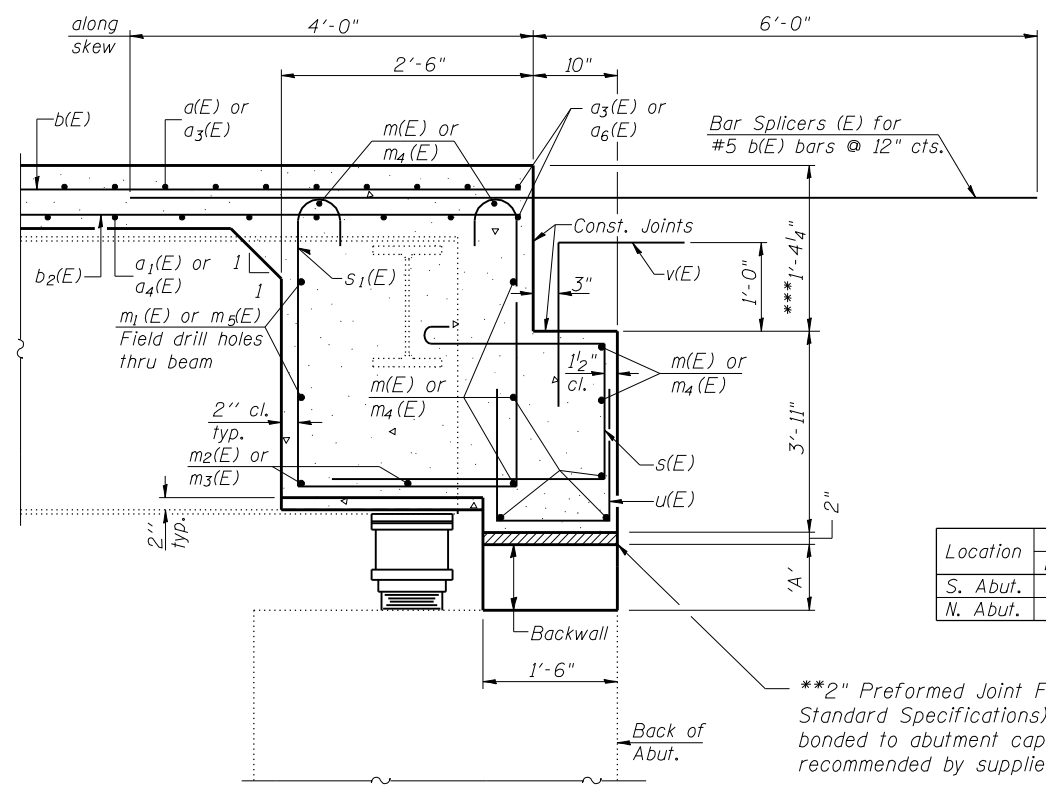


SECTION B-B



PLAN AT SCUPPER

Note:
 Cut longitudinal reinforcement to clear drainage scuppers.



SECTION A-A

Dimensions at right angles to abutment, except as shown.

Notes:
 Reinforcement bars in diaphragm are billed with superstructure on sheet 18 of 38.
 Concrete in diaphragm is included with Concrete Superstructure on sheet 18 of 38.
 Concrete in backwall is included with Concrete Structures on sheet 30 and 31 of 38.
 For details of bars s(E), s1(E), v(E) & u(E), see sheet 18 of 38.
 The s(E) and s1(E) bars shall be placed parallel to the beams. Spacing for these bars shall be at right angles to the beams.
 The cost of field drilling holes in webs for m1(E) & m5(E) is included in the cost of Reinforcement Bars (Epoxy Coated).

MIN. BAR LAP
 #6 bar = 3'-4" (Diaphragm)

DIMENSION 'A'

Location	South Bound		North Bound	
	East End	West End	East End	West End
S. Abut.	8 1/8"	8 1/4"	9"	8 1/2"
N. Abut.	9"	9 1/2"	9 1/2"	8 7/8"

**2" Preformed Joint Filler (per article 1051.09 of the Standard Specifications) full width and vertically at edges bonded to abutment cap with suitable adhesive as recommended by supplier.

FILE NAME =	USER NAME = .MML	DESIGNED - RKM	REVISED -
... \0540063-0064-72e11-019-diaphragm-detail.dgn		CHECKED - MCB	REVISED -
	PLOT SCALE = 0:2.000000 '1' / IN.	DRAWN - CFC	REVISED -
CB PROJECT NO. 10007-3	PLOT DATE = 3/18/2013	CHECKED - RKM	REVISED -

STATE OF ILLINOIS
DEPARTMENT OF TRANSPORTATION

DIAPHRAGM DETAILS
STRUCTURE NO. 054-0063 (N.B.) & 054-0064 (S.B.)

SHEET NO. 19 OF 38 SHEETS

CB Coombe-Bloxdorf P.C.
 - CIVIL ENGINEERS -
 - STRUCTURAL ENGINEERS -
 - LAND SURVEYORS -
 Design Firm License No. 184-002703

F.A.I. RTE.	SECTION	COUNTY	TOTAL SHEETS	SHEET NO.
55	D6 LOGAN CO BR 2011-1	LOGAN	429	304
			CONTRACT NO. 72E11	

ILLINOIS FED. AID PROJECT