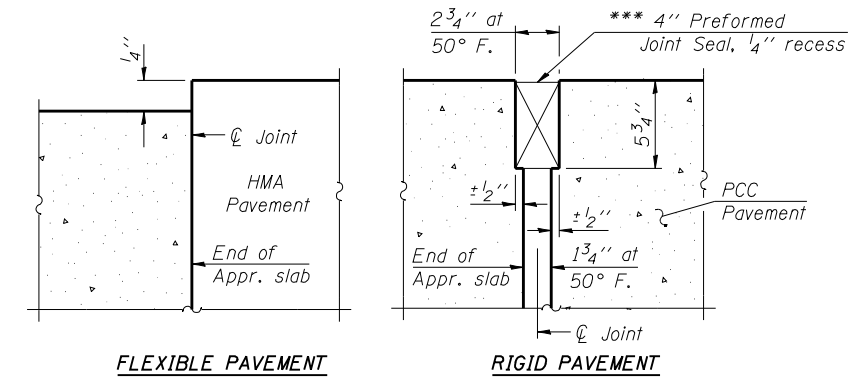
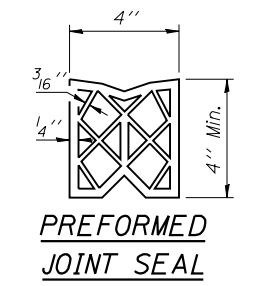


Notes:
 See sheet 22 of 38 for Sections C-C & D-D and View E-E.
 $a_7(E)$, $a_8(E)$, $a_9(E)$ and $a_{10}(E)$ bar spacings measured along \varnothing Rdwy.
 The joint opening shall be determined per Article 520.04 except that on jointless structures, the distance described as the bridge length between the nearest fixed bearings each way from the joint shall be taken as half the bridge length plus the approach slab length. The minimum dimension shall be $1\frac{1}{2}$ " for installation purposes.

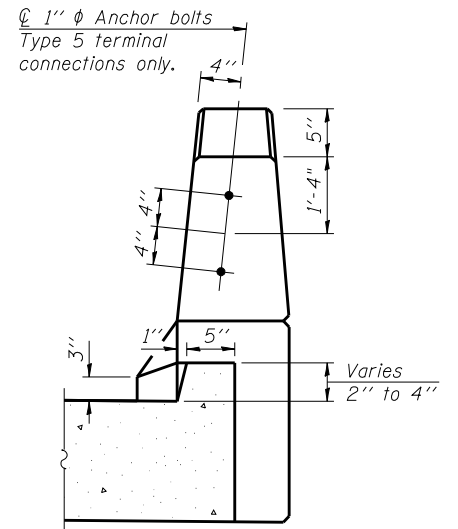
*** Cost included with Concrete Superstructure.



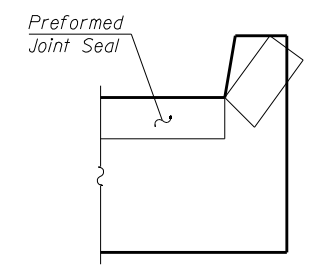
DETAIL A



PREFORMED JOINT SEAL

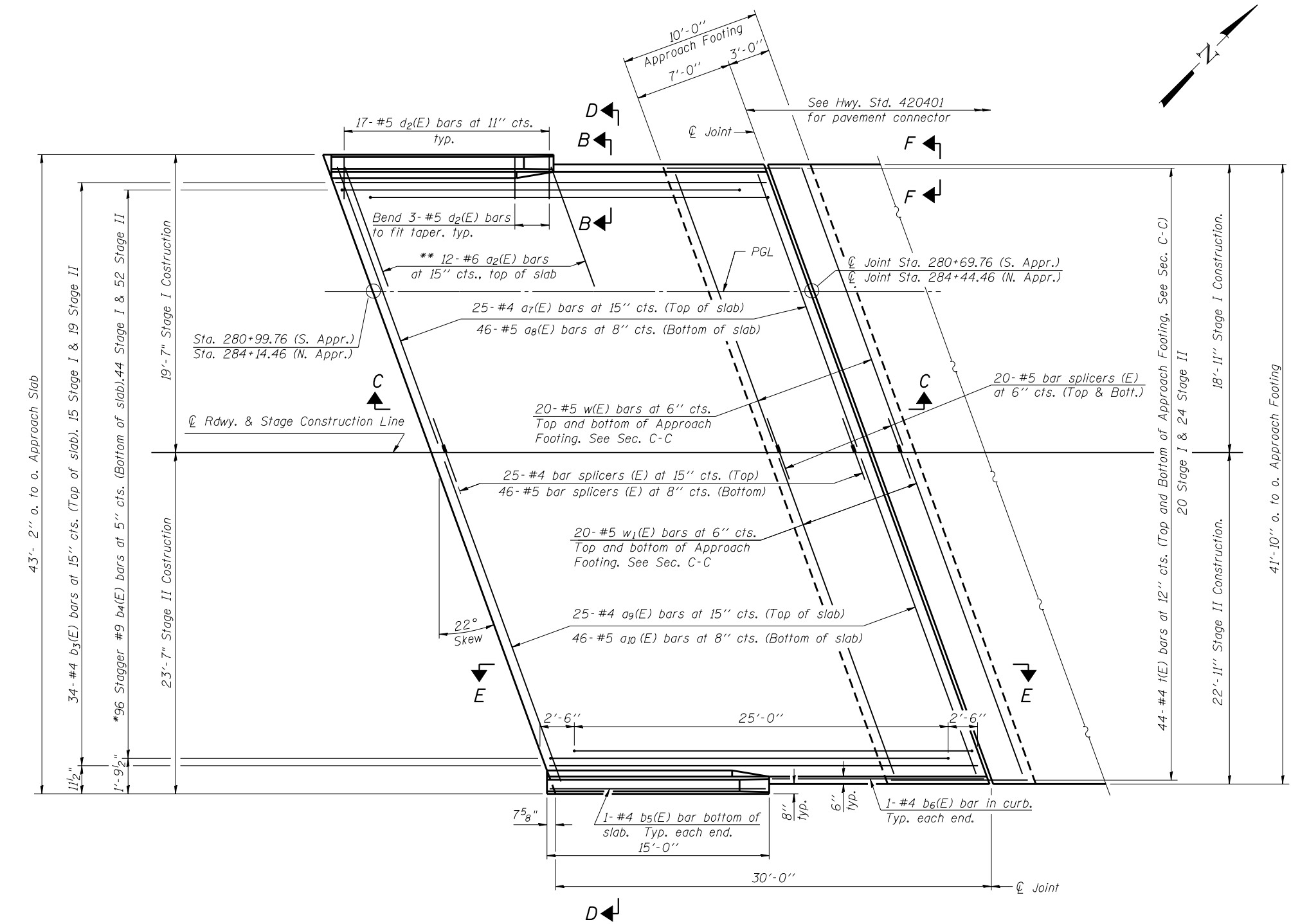


VIEW B-B



VIEW F-F

Angle Preformed Joint Seal at 45° at curbs when req'd for drainage.



PLAN

(North Approach shown, South Approach - Rotate 180°)

*Tilt #9 $b_4(E)$ bars as required to maintain clearance.
 **Space between $a_7(E)$ & $a_9(E)$ bars, typ. each parapet.

BA-R

1-27-12

(Sheet 2 of 3)

FILE NAME =	USER NAME = .MML.	DESIGNED - RKM	REVISED -
...\\0540063-0064-72e11-021-approach-slab-details-nb.dgn		CHECKED - MCB	REVISED -
PLOT SCALE = 0:2.000000 '1' / IN.		DRAWN - CFC	REVISED -
CB PROJECT NO. 10007-3	PLOT DATE = 3/18/2013	CHECKED - RKM	REVISED -

STATE OF ILLINOIS
 DEPARTMENT OF TRANSPORTATION

BRIDGE APPROACH SLAB DETAILS (NORTH BOUND STRUCTURE)
 STRUCTURE NO. 054-0063 (N.B.) & 054-0064 (S.B.)

SHEET NO. 21 OF 38 SHEETS

CB Coombe-Bloxdorf P.C.
 - CIVIL ENGINEERS -
 - STRUCTURAL ENGINEERS -
 - LAND SURVEYORS -
 Design Firm License No. 184-002703

F.A.I. RTE.	SECTION	COUNTY	TOTAL SHEETS	SHEET NO.
55	D6 LOGAN CO BR 2011-1	LOGAN	429	306

CONTRACT NO. 72E11
 ILLINOIS FED. AID PROJECT