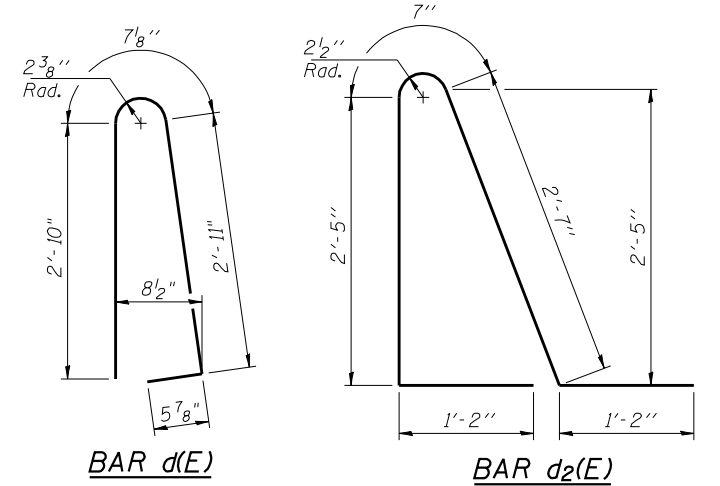


Notes:
 See sheet 21 of 38 for Detail A and View B-B.
 Approach slab and parapet concrete shall be paid for as Concrete Superstructure.
 Approach footing concrete shall be paid for as Concrete Structures.
 Reinforcement shall be paid for as Reinforcement Bars, Epoxy Coated.
 For v(E) bar details, see sheet 18 of 38.
 The approach footing maximum applied service bearing pressure (Q_{max}) = 2.0 ksf.
 For bar splicer details, see sheet 35 of 38.
 Cost of excavation for approach footing included with Concrete Structures.
 For Granular Backfill for Structures and drainage treatment details, see sheet 2 of 38.
 For additional parapet details, see sheet 21 of 38.

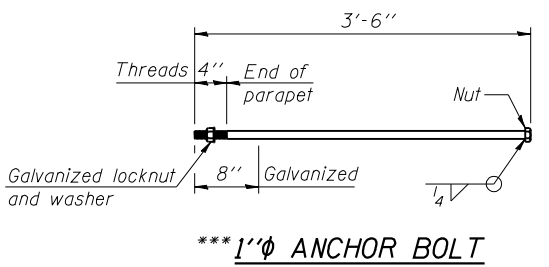


* Tilt #9 b₄(E) bars as required to maintain clearance.
 ** Before grinding up to 1/4" max.
 *** Cost included with Concrete Superstructure.

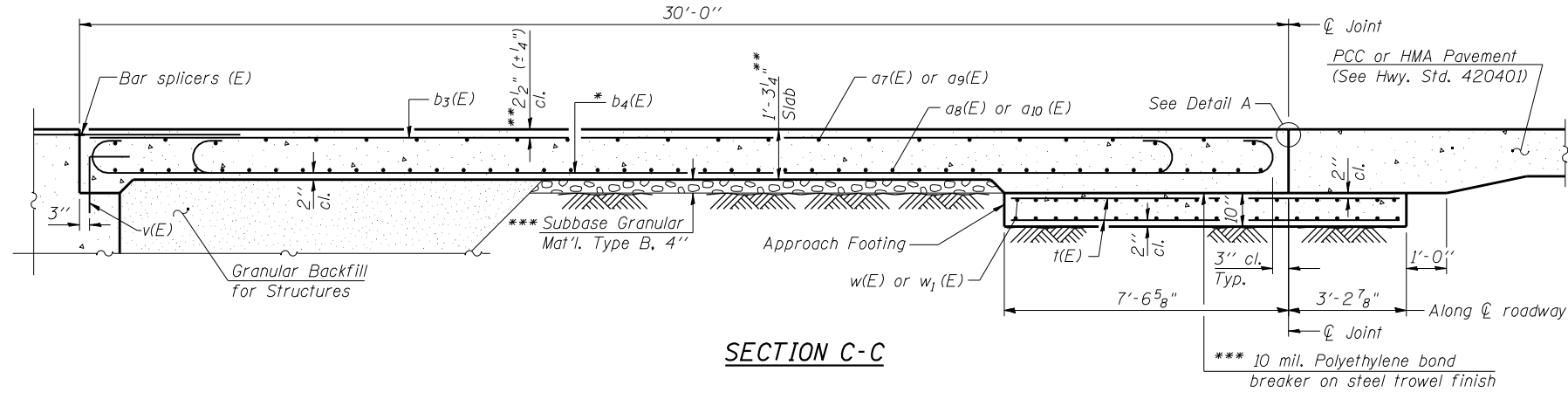
**FOUR APPROACHES
 BILL OF MATERIAL**

Bar	No.	Size	Length	Shape
a ₂ (E)	96	#6	6'-6"	—
a ₇ (E)	100	#4	20'-2"	—
a ₈ (E)	184	#5	20'-0"	—
a ₉ (E)	100	#4	24'-7"	—
a ₁₀ (E)	184	#5	24'-4"	—
b ₃ (E)	136	#4	29'-8"	—
b ₄ (E)	384	#9	29'-9"	—
b ₅ (E)	8	#4	14'-8"	—
b ₆ (E)	8	#4	14'-6"	—
d(E)	136	#5	6'-10"	—
d ₂ (E)	136	#5	7'-11"	—
e ₈ (E)	64	#4	14'-8"	—
e ₉ (E)	8	#8	14'-8"	—
t(E)	352	#4	10'-3"	—
w(E)	160	#5	20'-0"	—
w ₁ (E)	160	#5	24'-4"	—
Concrete Superstructure			Cu. Yd.	270.2
Concrete Structures			Cu. Yd.	55.7
Reinforcement Bars, Epoxy Coated			Pound	66,970

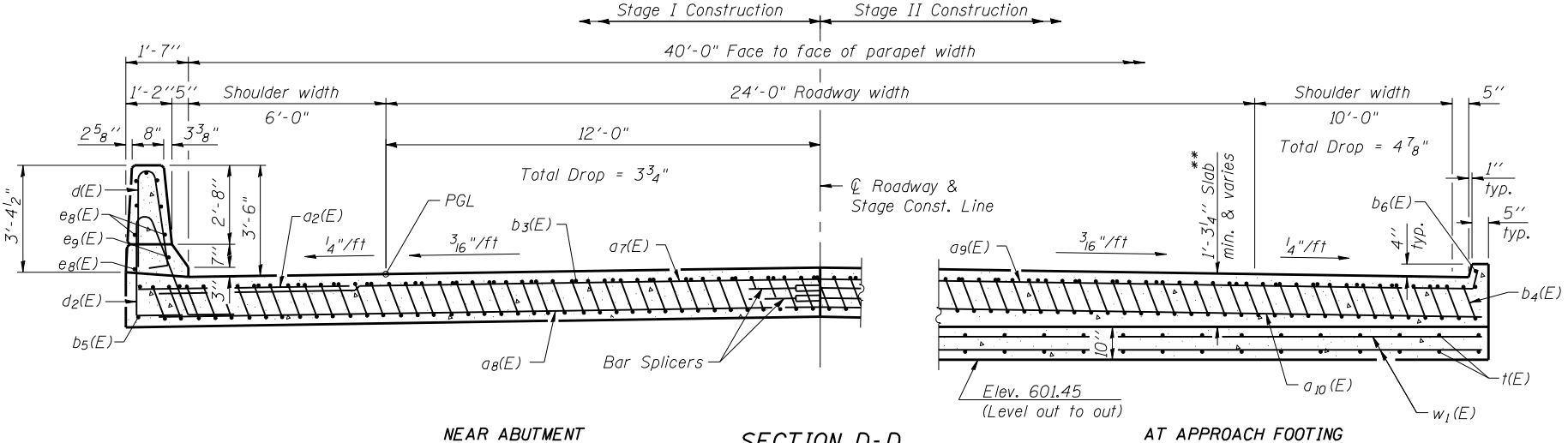
**** 57,160 lbs Superstructure
 9,810 lbs Substructure



*** 1" ϕ ANCHOR BOLT



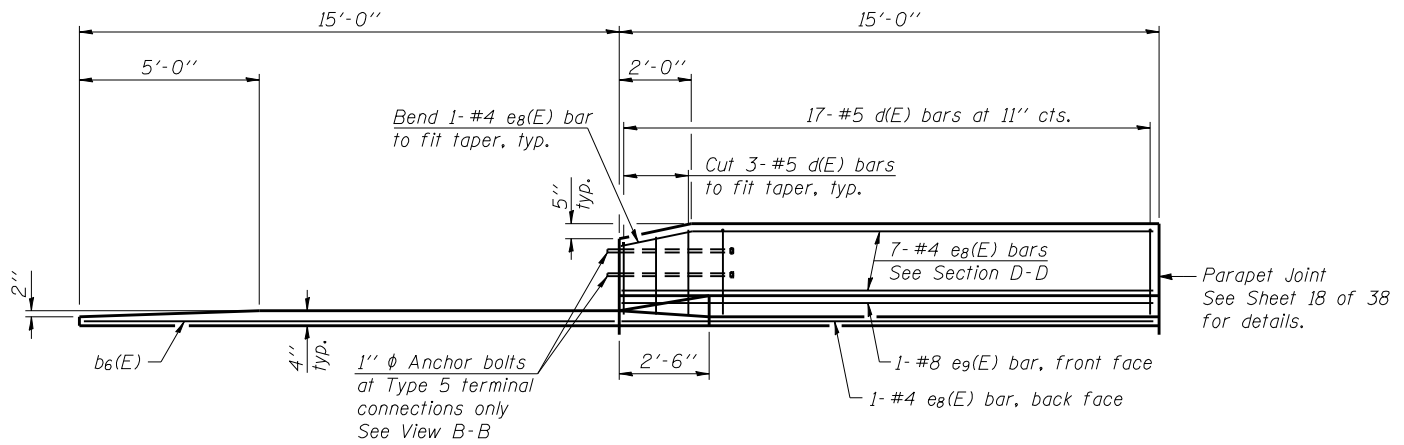
SECTION C-C



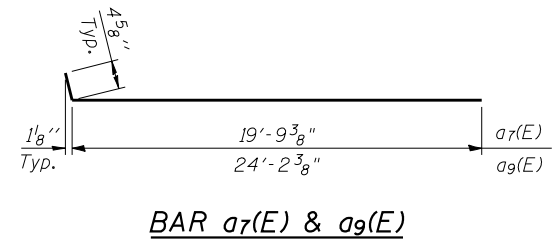
NEAR ABUTMENT

SECTION D-D

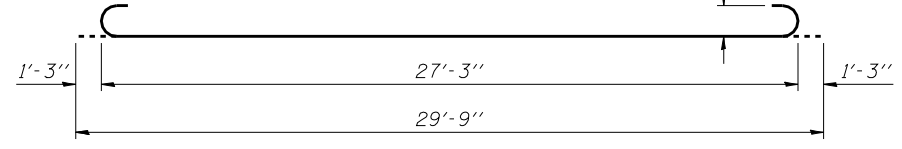
AT APPROACH FOOTING



VIEW E-E



BAR a₇(E) & a₉(E)



BAR b₄(E)

BA-R

1-27-12

(Sheet 3 of 3)

FILE NAME =	USER NAME = .MML.	DESIGNED - RKM	REVISED -
... \0540063-0064-72e11-022-approach-slab	details.dgn	CHECKED - MCB	REVISED -
	PLOT SCALE = 0:2.000000 '1' / IN.	DRAWN - CFC	REVISED -
CB PROJECT NO. 10007-3	PLOT DATE = 3/18/2013	CHECKED - RKM	REVISED -

STATE OF ILLINOIS
 DEPARTMENT OF TRANSPORTATION

BRIDGE APPROACH SLAB DETAILS
 STRUCTURE NO. 054-0063 (N.B.) & 054-0064 (S.B.)

SHEET NO. 22 OF 38 SHEETS

CB Coombe-Bloxdorf P.C.
 - CIVIL ENGINEERS -
 - STRUCTURAL ENGINEERS -
 - LAND SURVEYORS -
 Design Firm License No. 184-002703

F.A.I. RTE.	SECTION	COUNTY	TOTAL SHEETS	SHEET NO.
55	D6 LOGAN CO BR 2011-1	LOGAN	429	307
				CONTRACT NO. 72E11

ILLINOIS FED. AID PROJECT