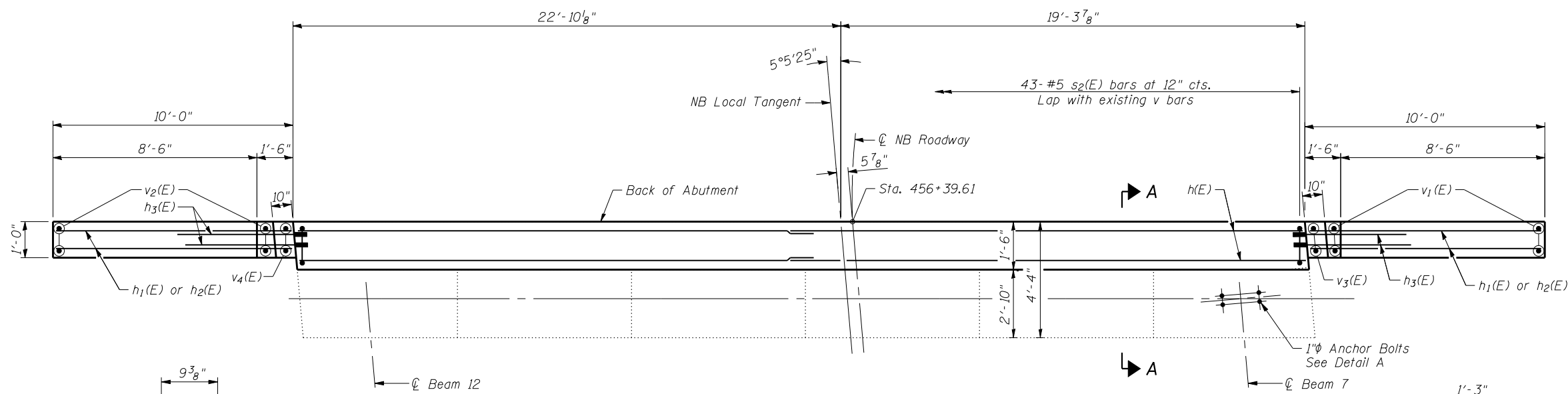


ELEVATION
(Looking South)

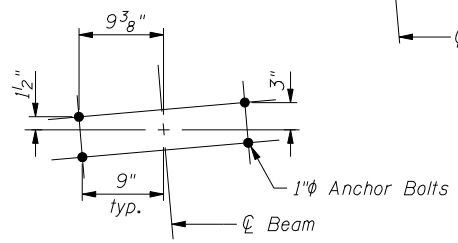
*Bars epoxy grouted into existing cap a min 9". Cost included with Concrete Structures.

BILL OF MATERIAL

Bar	No.	Size	Length	Shape
h(E)	4	#5	22'-9"	—
h1(E)	34	#6	9'-8"	—
h2(E)	20	#5	8'-11"	—
h3(E)	34	#6	6'-0"	—
s2(E)	43	#5	2'-1"	U
v1(E)	9	#5	10'-7"	—
v2(E)	9	#5	14'-0"	—
v3(E)	2	#5	3'-10"	—
v4(E)	2	#5	5'-7"	—
Structure Excavation		Cu. Yd.	69	
Concrete Structures		Cu. Yd.	6.9	
Reinforcement Bars, Epoxy Coated		Pound	1420	

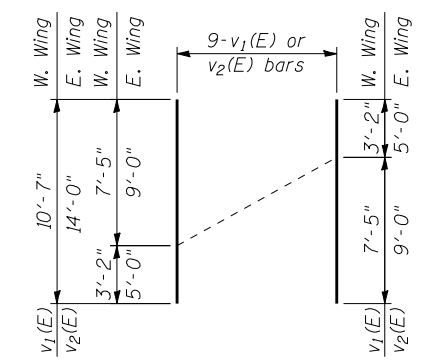
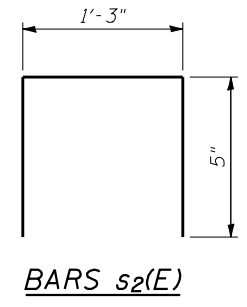


PLAN



DETAIL A
(Showing Anchor Bolt Location)

MIN. BAR LAP
#5 bar = 3'-3"



FIELD CUTTING DIAGRAM
Order v1(E) and v2(E) bars full length. Cut as shown and use remainder of bars in opposite face.

CB Coombe-Bloxdorf P.C.
- CIVIL ENGINEERS -
- STRUCTURAL ENGINEERS -
- LAND SURVEYORS -
Design Firm License No. 184-002703

FILE NAME =	USER NAME = .MML	DESIGNED - GJB	REVISED -
... \0540065-0066-72e11-032-s-abut-sb.dgn		CHECKED - MCB/RKM	REVISED -
		DRAWN - CFC/MML	REVISED -
CB PROJECT NO 10065-1	PLOT DATE = 3/18/2013	CHECKED - MCB/GJB	REVISED -

STATE OF ILLINOIS
DEPARTMENT OF TRANSPORTATION

SOUTH ABUTMENT (NORTH BOUND STRUCTURE)
STRUCTURE NO. 054-0065 (N.B.) & 054-0066 (S.B.)

F.A.I. RTE.	SECTION	COUNTY	TOTAL SHEETS	SHEET NO.
55	D6 LOGAN CO BR 2011-1	LOGAN	429	355
				CONTRACT NO. 72E11