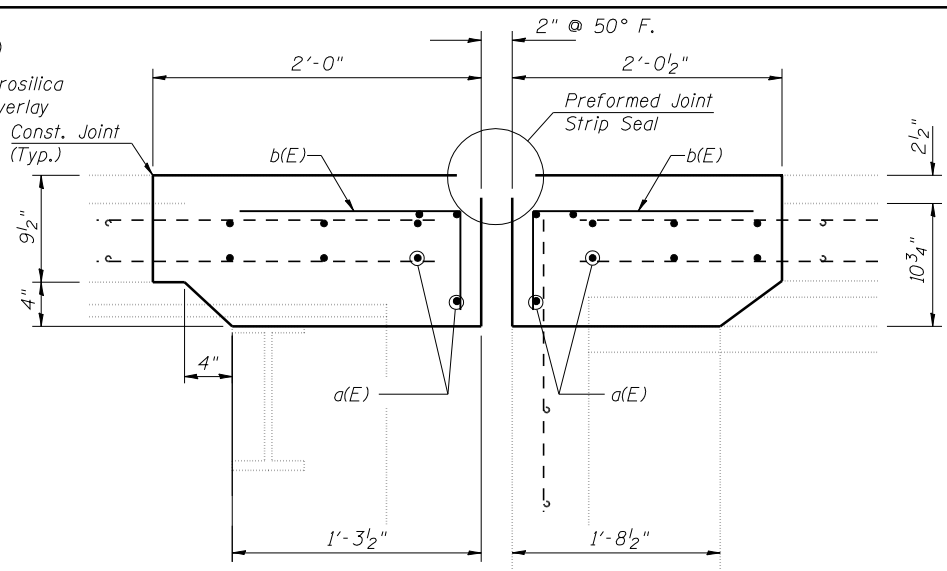
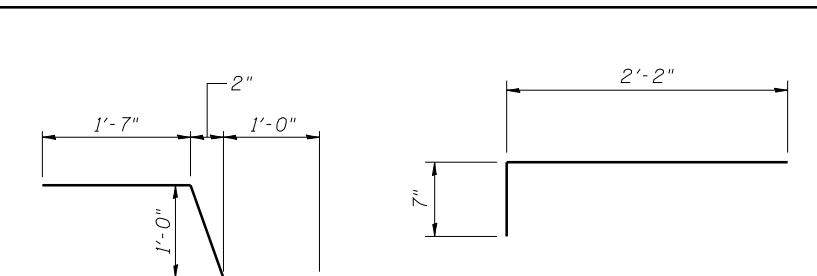


**SECTION A-A**  
(Showing Removal)

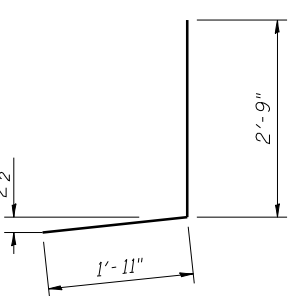


**SECTION A-A**  
(Showing Proposed)

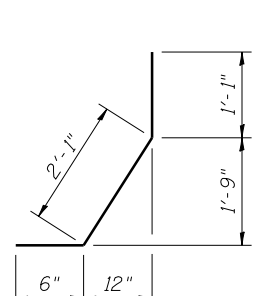


**BAR a<sub>3</sub>(E)**

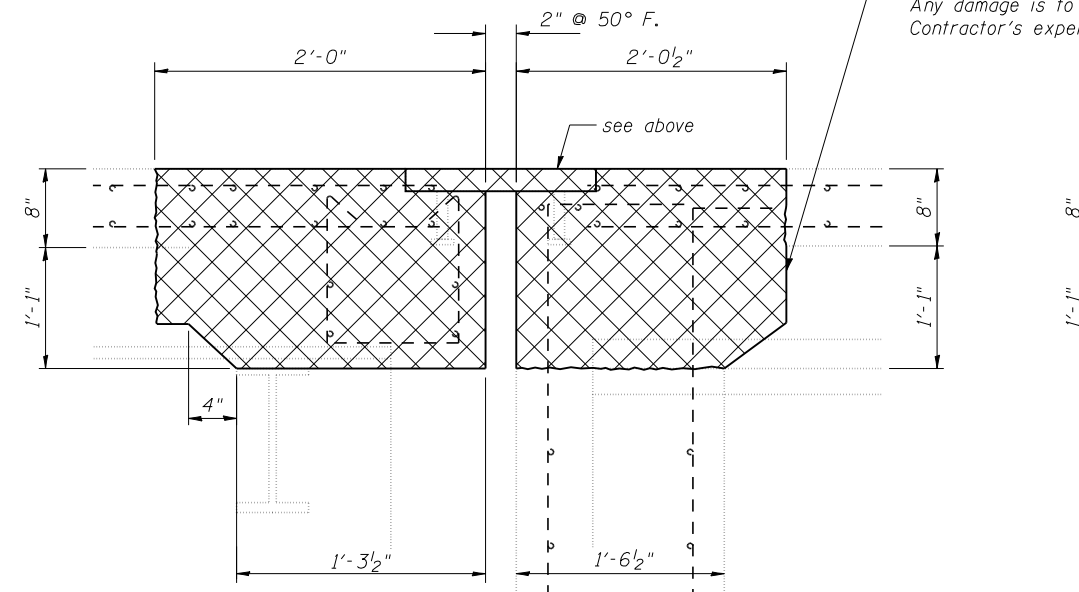
**BAR b(E)**



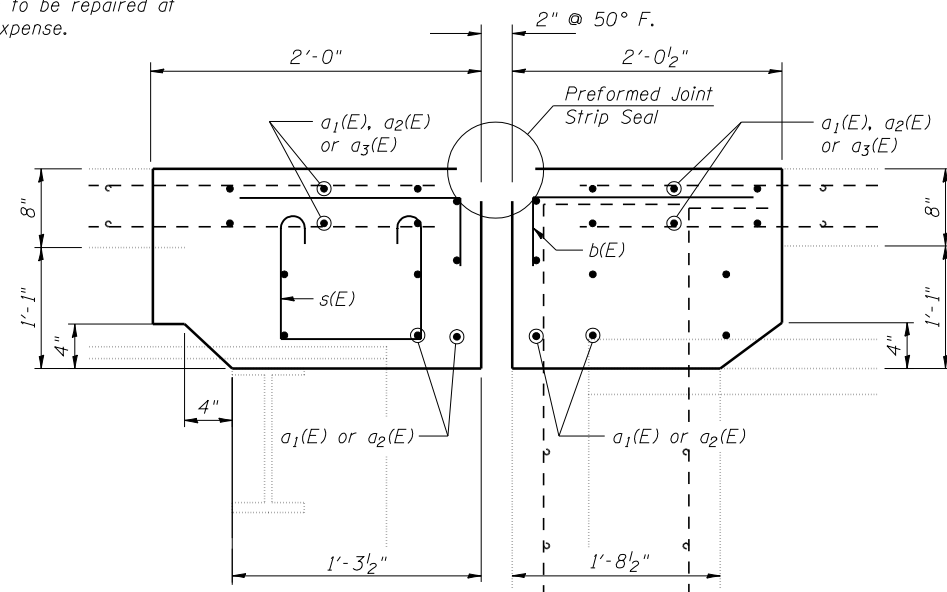
**BAR d(E)**



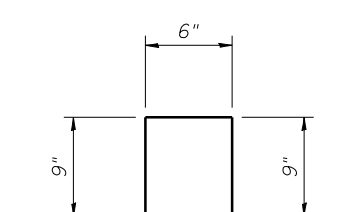
**BAR d<sub>1</sub>(E)**



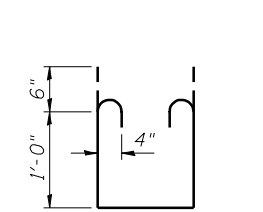
**SECTION B-B**  
(Showing Removal)



**SECTION B-B**  
(Showing Proposed)



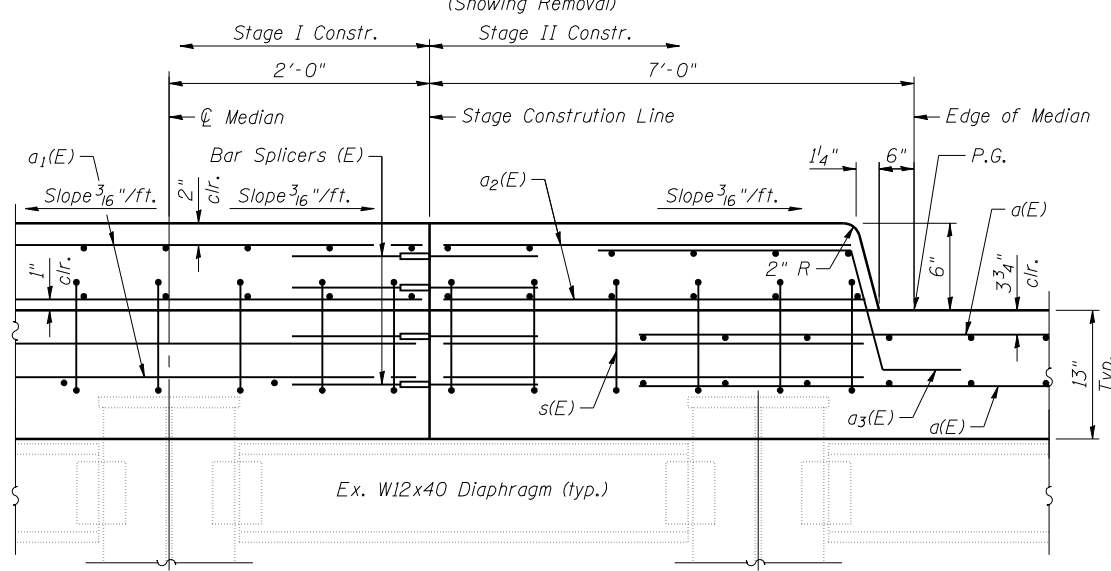
**BAR d<sub>2</sub>(E)**



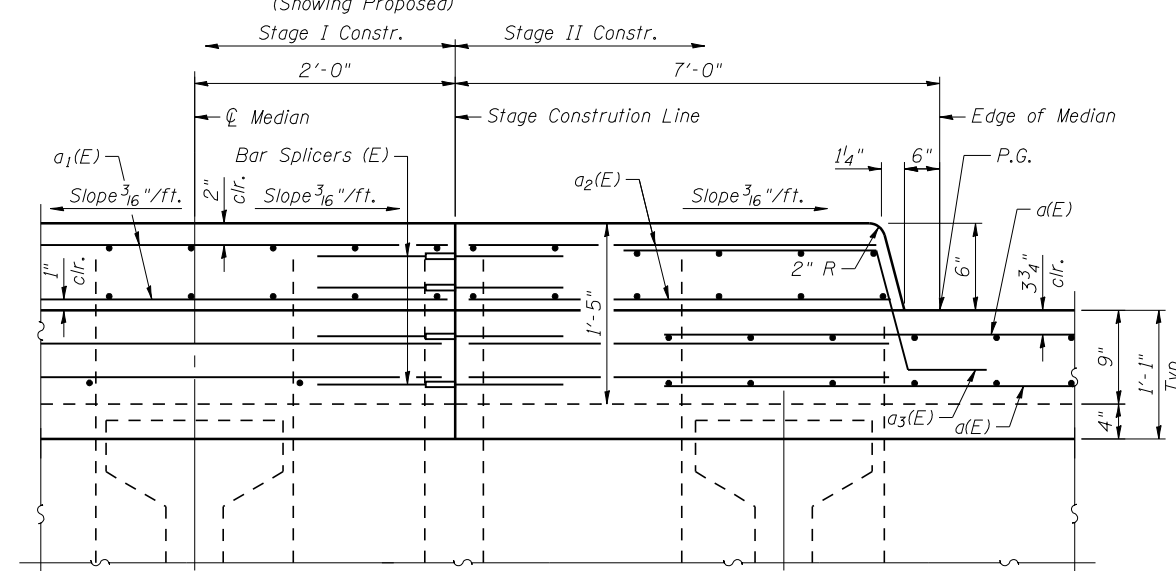
**BAR s(E)**

Contractor must exercise extra care so not to damage existing PPC-I beams. Any damage is to be repaired at Contractor's expense.

Note:  
Cross-hatched areas indicate limits of Concrete Removal.  
Existing reinforcement bars extending into the removal area shall be cleaned, straightened and incorporated into new construction. Any reinforcement bars that are damaged during concrete removal shall be replaced with an approved bar splicer or anchorage system. Cost included with Concrete Removal.



**SECTION THROUGH BRIDGE DECK MEDIAN AT EXPANSION JOINT**  
(Looking East)



**SECTION THROUGH APPROACH SPAN MEDIAN AT EXPANSION JOINT**  
(Looking East)



JOB	= 2236.10	DESIGNED	- AAN	REVISED	-
FILE	= 0540069-72E11-004-006-JOINT.dgn	CHECKED	- ENV	REVISED	-
DATE	= 3/15/2013	DRAWN	- SJS	REVISED	-
		CHECKED	- MDC	REVISED	-

**STATE OF ILLINOIS**  
**DEPARTMENT OF TRANSPORTATION**

**EXPANSION JOINT REPLACEMENT DETAILS**  
**STRUCTURE NO. 054-0069**

SHEET NO. 5 OF 9 SHEETS

F.A.I. RTE.	SECTION	COUNTY	TOTAL SHEETS	SHEET NO.
55	D6 LOGAN CO BR 2011-1	LOGAN	429	379
CONTRACT NO. 72E11				

ILLINOIS FED. AID PROJECT