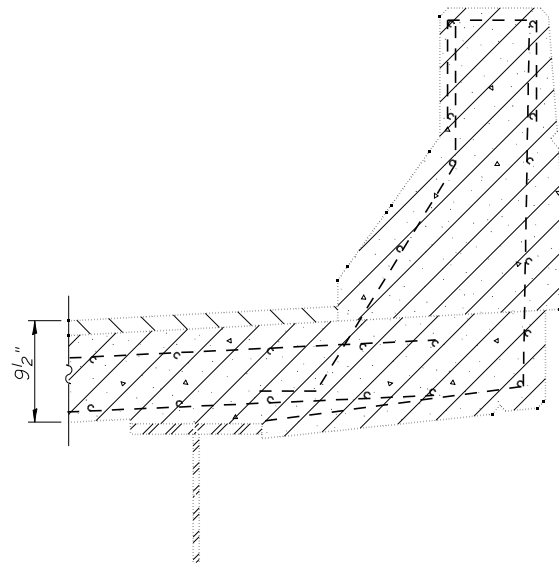
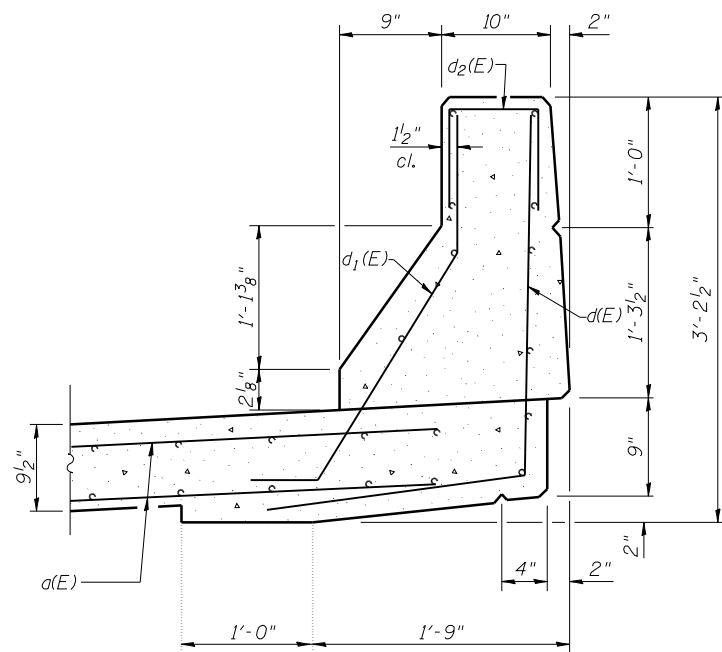


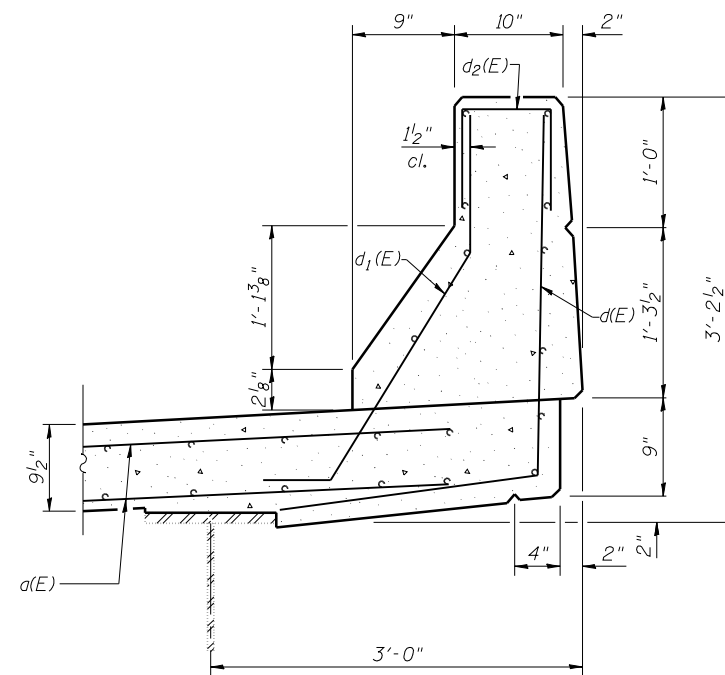
SECTION THROUGH PARAPET AND SOFFIT  
APPROACH SPAN REMOVAL



SECTION THROUGH PARAPET AND SOFFIT  
MAIN SPAN REMOVAL



SECTION THROUGH PARAPET AND SOFFIT  
APPROACH SPAN CONSTRUCTION



SECTION THROUGH PARAPET AND SOFFIT  
MAIN SPAN CONSTRUCTION

Note: Cross-hatched areas indicate limits of Concrete Removal.

Existing reinforcement bars extending into the removal area shall be cleaned, straightened and incorporated into new construction. Any reinforcement bars that are damaged during concrete removal shall be replaced with an approved bar splicer or anchorage system. Cost included with Concrete Removal.

See Sheet 5 of 9 for reinforcement bar details.

**BILL OF MATERIAL**

Bar	No.	Size	Length	Shape	
d(E)	72	6	35'-6"	—	
a <sub>1</sub> (E)	96	6	14'-0"	—	
a <sub>2</sub> (E)	96	6	8'-11"	—	
a <sub>3</sub> (E)	24	5	3'-7"	~	
b(E)	264	6	2'-9"	┌	
d(E)	32	5	4'-8"	J	
d <sub>1</sub> (E)	32	5	3'-8"	J	
d <sub>2</sub> (E)	8	5	2'-0"	Π	
s(E)	32	4	4'-0"	⊞	
Reinforcement Bars, Epoxy Coated				Pound	8710
Concrete Removal				Cu. Yd.	34.2
Concrete Superstructure				Cu. Yd.	34.2
Bar Splicers				Each	48