




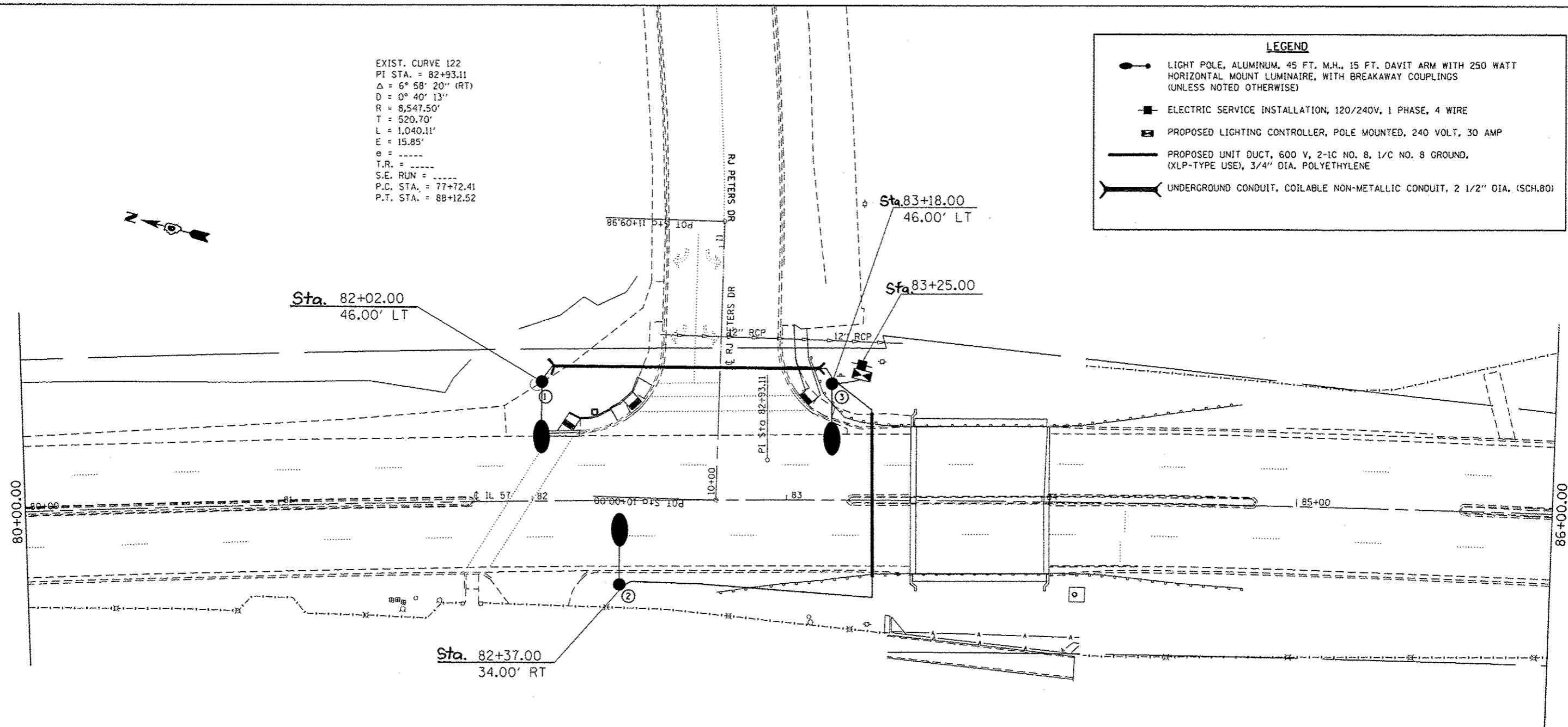


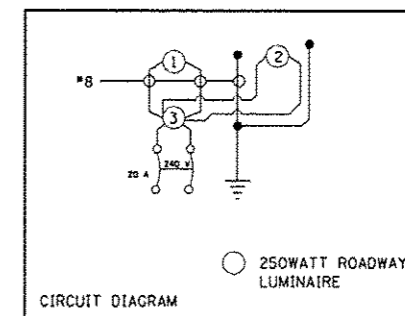
EXIST. CURVE 122  
 PI STA. = 82+93.11  
 $\Delta = 6^\circ 58' 20''$  (RT)  
 $D = 0^\circ 40' 13''$   
 $R = 8,547.50'$   
 $T = 520.70'$   
 $L = 1,040.11'$   
 $E = 15.85'$   
 $\theta =$  -----  
 T.R. = -----  
 S.E. RUN = -----  
 P.C. STA. = 77+72.41  
 P.T. STA. = 88+12.52

**LEGEND**

-  LIGHT POLE, ALUMINUM, 45 FT. M.H., 15 FT. DAVIT ARM WITH 250 WATT HORIZONTAL MOUNT LUMINAIRE, WITH BREAKAWAY COUPLINGS (UNLESS NOTED OTHERWISE)
-  ELECTRIC SERVICE INSTALLATION, 120/240V, 1 PHASE, 4 WIRE
-  PROPOSED LIGHTING CONTROLLER, POLE MOUNTED, 240 VOLT, 30 AMP
-  PROPOSED UNIT DUCT, 600 V, 2-1C NO. 8, 1/C NO. 8 GROUND, (XLP-TYPE USE), 3/4" DIA. POLYETHYLENE
-  UNDERGROUND CONDUIT, COILABLE NON-METALLIC CONDUIT, 2 1/2" DIA. (SCH.80)



BILL OF MATERIALS - THIS SHEET			
PAY ITEM	DESCRIPTION	UNIT	QUANTITY
80400100	ELECTRIC SERVICE INSTALLATION	EACH	1
81028760	UNDERGROUND CONDUIT, COILABLE NONMETALLIC CONDUIT, 2 1/2" DIA.	FOOT	158
81603000	UNIT DUCT, 600V, 2-1C NO. 8, 1/C NO. 8 GROUND, (XLP-TYPE USE), 3/4" DIA.	FOOT	350
82102250	LUMINAIRE, SODIUM VAPOR, HORIZONTAL MOUNT, 250 WATT	EACH	3
82500300	LIGHTING CONTROLLER, POLE MOUNTED, 240VOLT, 30AMP	EACH	1
83003600	LIGHT POLE, ALUMINUM, 45 FT. M.H., 15 FT. DAVIT ARM	EACH	3
83600355	LIGHT POLE FOUNDATION, METAL, 15" BOLT CIRCLE, 8" X 6"	EACH	3
83800650	BREAKAWAY DEVICE, COUPLING WITH STAINLESS STEEL SCREEN	EACH	8



NOTE:  
 1. LIGHTING UNIT 3 SHALL NOT BE INSTALLED WITH BREAKAWAY COUPLINGS

FILE NAME =	USER NAME = sparksgw	DESIGNED -	REVISED -
c:\p\work\p\id\sparksgw\08333842\7203-Lighting-SHT.dgn		DRAWN -	REVISED -
		CHECKED -	REVISED -
Default	PLOT DATE = Mar-22-2013 11:50:58AM	DATE -	REVISED -

STATE OF ILLINOIS  
 DEPARTMENT OF TRANSPORTATION

LIGHTING PLAN

SCALE: SHEET OF SHEETS STA. TO STA.

F.A.P. RTE.	SECTION	COUNTY	TOTAL SHEETS	SHEET NO.
502	53 L	ADAMS	12	8
CONTRACT NO. 72G03			ILLINOIS FED. AID PROJECT	