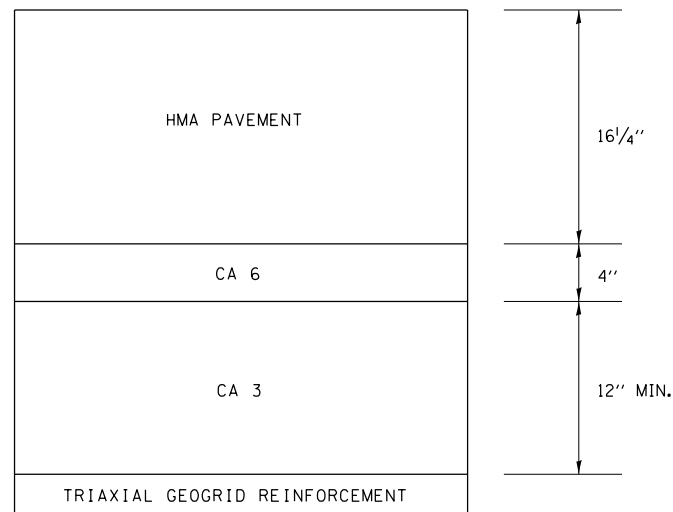


DETAIL OF AGGREGATE SUBGRADE IMPROVEMENT

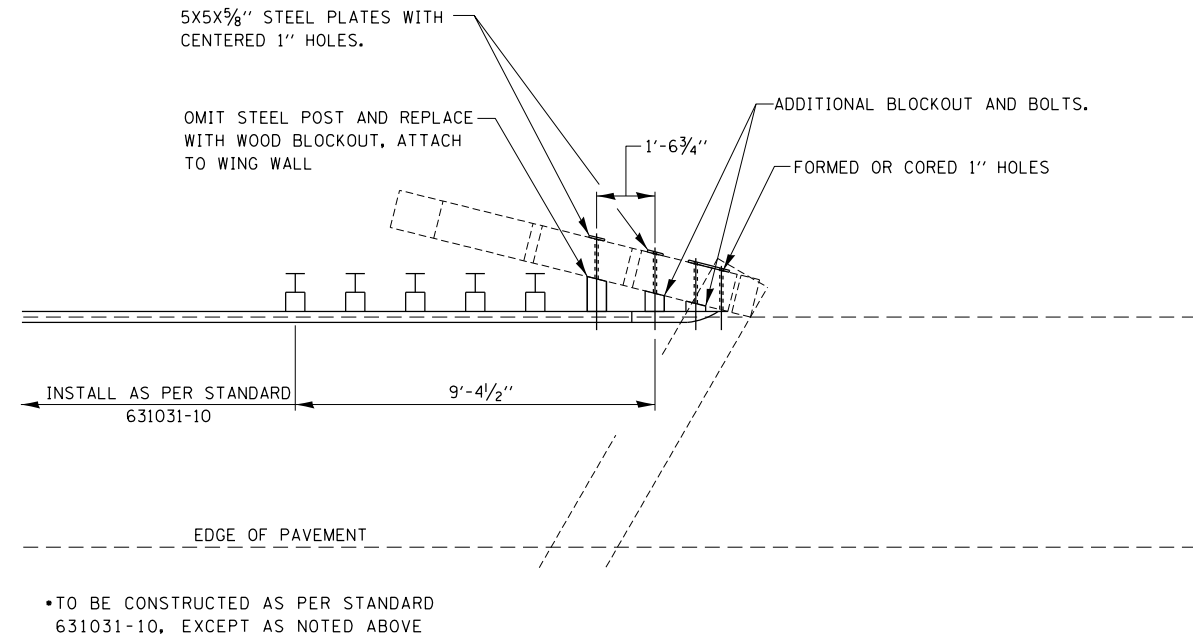


SB STA. 4201+08.13 TO 4207+86.83
 SB STA. 4428+44.30 TO 4431+97.40
 SB STA. 4478+57.87 TO 4484+74.37

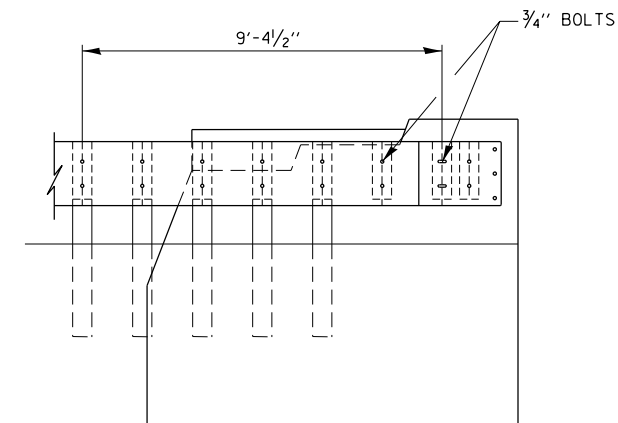
NOTES:
 1. THE FIRST LIFT OF HMA BINDER COURSE SHALL BE PLACED WITHIN 4 DAYS OF THE START OF PAVEMENT REMOVAL OPERATION.

LOCATION	LENGTH (FT.)	WIDTH (FT.)	DEPTH (FT.)	QTY (TON)	
4201+08.13 TO 4207+86.83	678.7	24.0	1.333	1,648.6	CLAY CO.
4428+44.30 TO 4431+97.40	353.1	24.0	1.333	857.7	EFFINGHAM CO.
4478+57.87 TO 4484+74.37	616.5	24.0	1.333	1,497.5	EFFINGHAM CO.
TOTAL =				4,003.8	

DETAIL OF TRAFFIC BARRIER TERMINAL, TYPE 6 (SPECIAL)



• TO BE CONSTRUCTED AS PER STANDARD 631031-10, EXCEPT AS NOTED ABOVE



• (25-6-1)RS-8 & (13-1)RS-2
 •• EFFINGHAM, CLAY