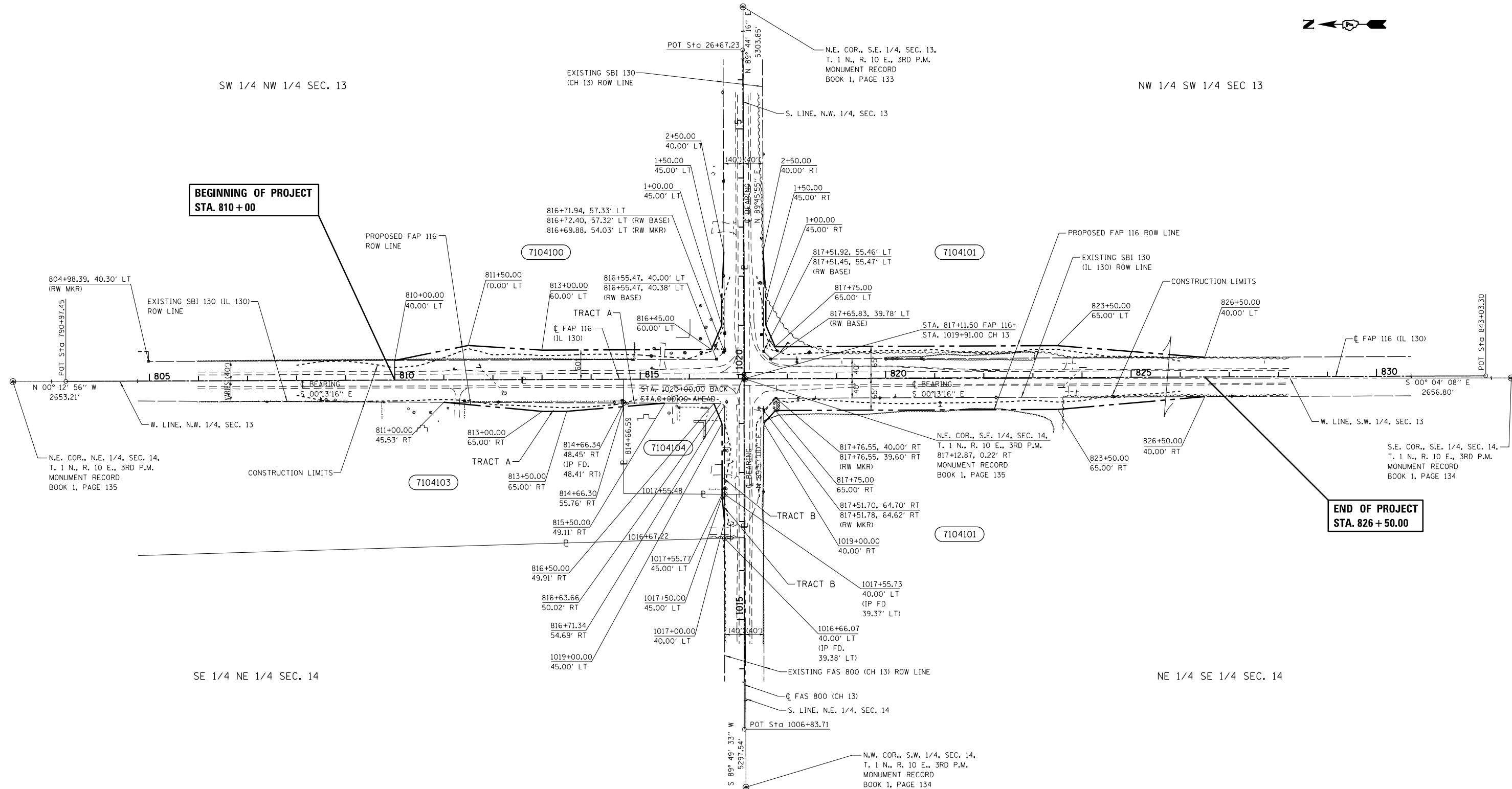


# T. 1 N., R. 10 E., 3rd P.M., SHELBY & SALEM TWP.



**BEGINNING OF PROJECT  
STA. 810 + 00**

**END OF PROJECT  
STA. 826 + 50.00**

NOTE:  
BEARINGS ARE REFERENCED TO THE ILLINOIS STATE PLANE COORDINATE SYSTEM, EAST ZONE DATUM OF 1983(97)

⊙ - MAG NAIL  
⊙ - IRON PIN  
⊙ - TABLET  
⊗ - ROW MARKER

PARCEL	OWNER	AREA TAKEN		EASEMENT	AREA REM	INST	RECORDED			EXCESS	
		ADD	EXIST				MICRO FILM NO	DATE	BOOK	PAGE	AREA
7104100	JOHN M. & ALICE S. LUTHER, TRUSTEES	0.335 AC.	0.868 AC.		160.417 AC.						
7104101	KENT L. & JAMILYN J. MARKS	0.881 AC.	1.973 AC.		117.746 AC.						
7104103	DAVID A. & VICKI D. TOMBLINSON	0.098 AC.	0.085 AC.		13.417 AC.						
	TRACT A	0.094 AC.	0.000 AC.								
	TRACT B	0.004 AC.	0.085 AC.								
7104104	RAYMOND & PATRICIA L. HAYES	0.036 AC.	0.000 AC.		0.764 AC.						
	TRACT A	0.007 AC.	0.000 AC.								
	TRACT B	0.029 AC.	0.000 AC.								