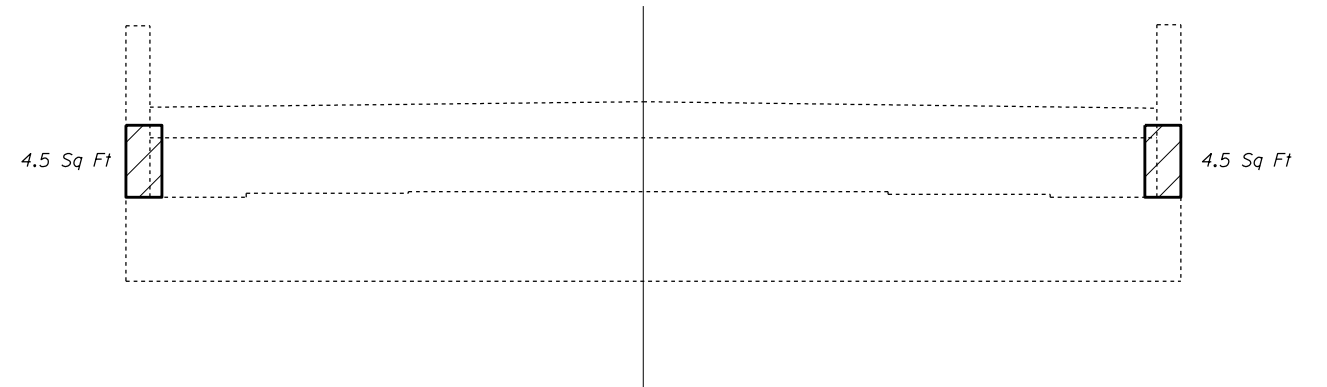
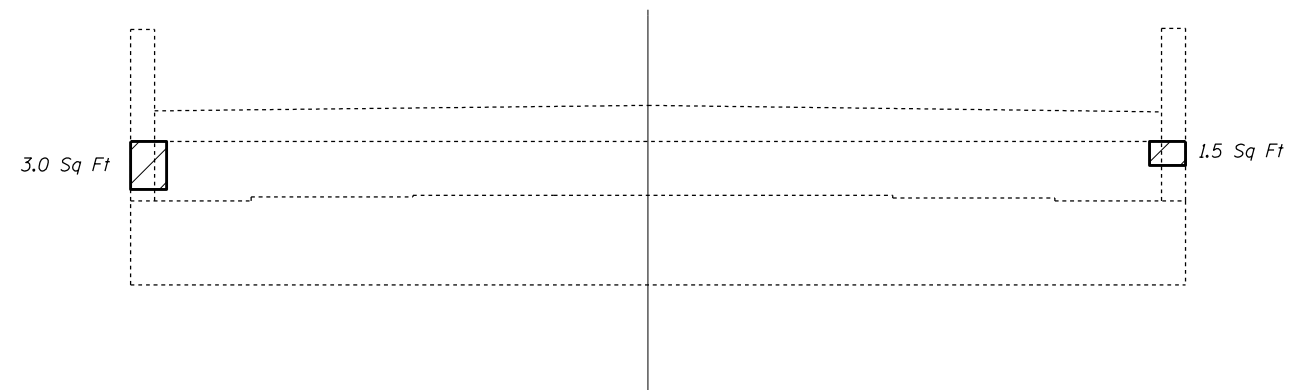


SN. 013-0002 - WEST ABUTMENT



SN. 013-0003 - WEST ABUTMENT

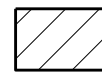


SN. 013-0002 - EAST ABUTMENT



SN. 013-0003 - EAST ABUTMENT

Note: Quantities are estimated. Actual quantities to be determined in the field by the Engineer.



Structural Repair of Concrete (Depth < 5")

FILE NAME =	USER NAME = steffenmk	DESIGNED - KLB	REVISED -
ct:\pw\work\p\idot\stefhenmk\d0312827\074600-shr-brd\details-013000203.dgn		DRAWN - KLB	REVISED -
Default	PLOT SCALE = 40.0000' / in.	CHECKED - MEA	REVISED -
	PLOT DATE = 3/29/2013	DATE -	REVISED -

STATE OF ILLINOIS
DEPARTMENT OF TRANSPORTATION

STRUCTURAL REPAIR OF CONCRETE < 5"
SN. 013-0002 (EB) & 013-0003 (WB)

SCALE: N/A SHEET 7 OF 15 SHEETS STA. TO STA.

• 07 Bridge Repairs 2014-1				
F.A.P. RTE.	SECTION	COUNTY	TOTAL SHEETS	SHEET NO.
327	*	CLAY	49	41
			CONTRACT NO. 74600	
ILLINOIS FED. AID PROJECT				