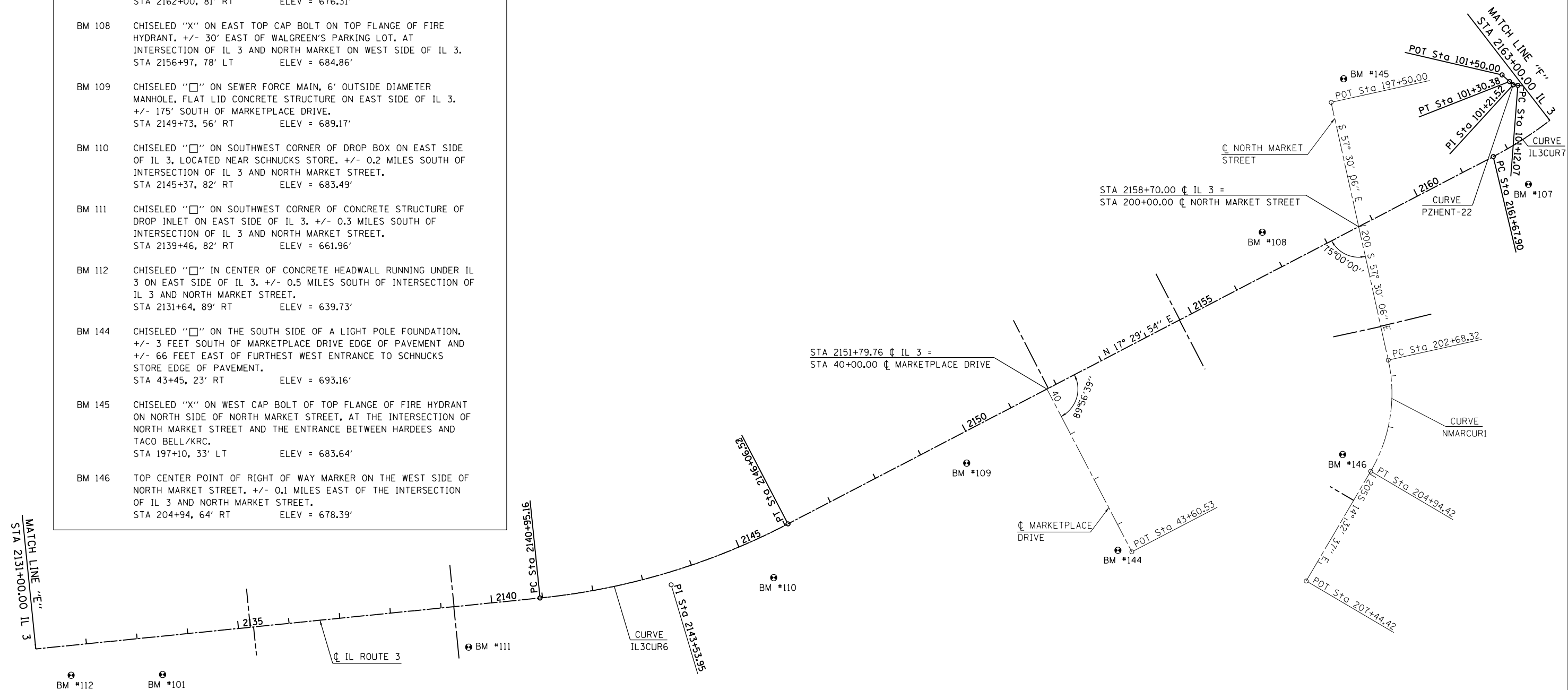


BENCHMARKS

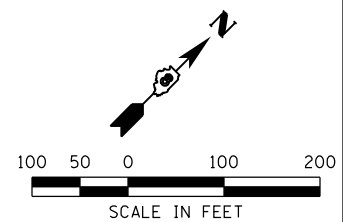
BM 101	FOUND CUT "□" ON SOUTHWEST CORNER OF CONCRETE SLAB (WITH THREE AG'S) ON EAST SIDE OF IL 3, +/- 0.8 MILES SOUTH OF INTERSECTION OF IL 3 AND COUNTRY CLUB LANE. STA 2133+43, 75' RT ELEV = 650.12'
BM 107	CHISELED "□" ON SEWER FORCE MAIN, 6' OUTSIDE DIAMETER MANHOLE, FLAT LID CONCRETE STRUCTURE ON EAST SIDE OF IL 3, +/- 0.1 MILES NORTH OF INTERSECTION OF IL 3 AND NORTH MARKET STREET. STA 2162+00, 81' RT ELEV = 676.31'
BM 108	CHISELED "X" ON EAST TOP CAP BOLT ON TOP FLANGE OF FIRE HYDRANT, +/- 30' EAST OF WALGREEN'S PARKING LOT, AT INTERSECTION OF IL 3 AND NORTH MARKET ON WEST SIDE OF IL 3. STA 2156+97, 78' LT ELEV = 684.86'
BM 109	CHISELED "□" ON SEWER FORCE MAIN, 6' OUTSIDE DIAMETER MANHOLE, FLAT LID CONCRETE STRUCTURE ON EAST SIDE OF IL 3, +/- 175' SOUTH OF MARKETPLACE DRIVE. STA 2149+73, 56' RT ELEV = 689.17'
BM 110	CHISELED "□" ON SOUTHWEST CORNER OF DROP BOX ON EAST SIDE OF IL 3, LOCATED NEAR SCHNUCK'S STORE, +/- 0.2 MILES SOUTH OF INTERSECTION OF IL 3 AND NORTH MARKET STREET. STA 2145+37, 82' RT ELEV = 683.49'
BM 111	CHISELED "□" ON SOUTHWEST CORNER OF CONCRETE STRUCTURE OF DROP INLET ON EAST SIDE OF IL 3, +/- 0.3 MILES SOUTH OF INTERSECTION OF IL 3 AND NORTH MARKET STREET. STA 2139+46, 82' RT ELEV = 661.96'
BM 112	CHISELED "□" IN CENTER OF CONCRETE HEADWALL RUNNING UNDER IL 3 ON EAST SIDE OF IL 3, +/- 0.5 MILES SOUTH OF INTERSECTION OF IL 3 AND NORTH MARKET STREET. STA 2131+64, 89' RT ELEV = 639.73'
BM 144	CHISELED "□" ON THE SOUTH SIDE OF A LIGHT POLE FOUNDATION, +/- 3 FEET SOUTH OF MARKETPLACE DRIVE EDGE OF PAVEMENT AND +/- 66 FEET EAST OF FURTHEST WEST ENTRANCE TO SCHNUCK'S STORE EDGE OF PAVEMENT. STA 43+45, 23' RT ELEV = 693.16'
BM 145	CHISELED "X" ON WEST CAP BOLT OF TOP FLANGE OF FIRE HYDRANT ON NORTH SIDE OF NORTH MARKET STREET, AT THE INTERSECTION OF NORTH MARKET STREET AND THE ENTRANCE BETWEEN HARDEES AND TACO BELL/KRRC. STA 197+10, 33' LT ELEV = 683.64'
BM 146	TOP CENTER POINT OF RIGHT OF WAY MARKER ON THE WEST SIDE OF NORTH MARKET STREET, +/- 0.1 MILES EAST OF THE INTERSECTION OF IL 3 AND NORTH MARKET STREET. STA 204+94, 64' RT ELEV = 678.39'

PROP. CURVE PZHTENT-22 PI STA. = 101+21.52 Δ = 34° 57' 58" (RT) D = 190° 59' 09" R = 30.00' T = 9.45' L = 18.31' E = 1.45' e = ----- T.R. = ----- S.E. RUN = ----- P.C. STA = 101+12.07 P.T. STA = 101+30.38	PROP. CURVE IL3CUR7 PI STA. = 2163+67.72 Δ = 30° 14' 57" (LT) D = 7° 45' 00" R = 739.30' T = 199.82' L = 390.31' E = 26.53' e = 4.0% T.R. = 52' S.E. RUN = 155' P.C. STA = 2161+67.90 P.T. STA = 2165+58.21
--	---



PROP. CURVE IL3CUR6 PI STA. = 2143+53.95 Δ = 21° 43' 59" (LT) D = 4° 15' 00" R = 1,348.14' T = 258.79' L = 511.36' E = 24.61' e = 6.0% T.R. = 47' S.E. RUN = 233' P.C. STA = 2140+95.16 P.T. STA = 2146+06.52

EXIST. CURVE NMACUR1 PI STA. = 203+86.98 Δ = 42° 57' 29" (RT) D = 18° 59' 59" R = 301.56' T = 118.66' L = 226.10' E = 22.51' e = 4.0% P.C. STA. = 202+68.32 P.T. STA. = 204+94.42



LAST SAVED = 1/25/2013 3:29:08 PM
 PEN TABLE = W:\4444\441
 PLOT DRIVER = pdfnclayersbw.pltcf9

FILE NAME = I:\1001100\Phase II - 76817\Cad\T\Plans\006_0876817-sht-ATB-6.dgn	USER NAME = beriechmann	DESIGNED -	REVISED -	STATE OF ILLINOIS DEPARTMENT OF TRANSPORTATION		ALIGNMENTS, TIES, AND BENCHMARKS	F.A.P. RTE. = 312	SECTION = 68-WRS-1	COUNTY = MONROE	TOTAL SHEETS = 760	SHEET NO. = 86		
PLOT SCALE = 200.0000' / in.	CHECKED -	REVISED -	CONTRACT NO. 76817										
PLOT DATE = 1/25/2013 3:29:08 PM	DATE -	REVISED -	ILLINOIS FED. AID PROJECT										
							SCALE: 1" = 100'		SHEET NO. 6 OF 20 SHEETS		STA. 2131+00.00 TO STA. 2163+00.00		