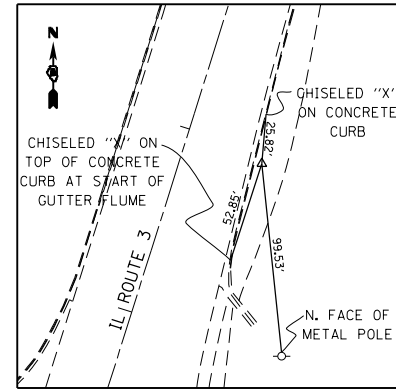
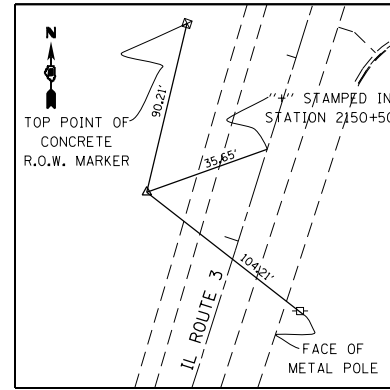


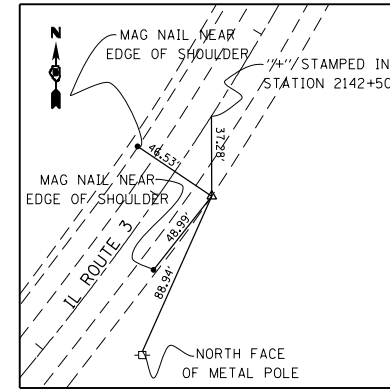
CP 1
IRON PIN W/ IDOT CAP
616,842.2040 N
2,300,507.5460 E
STA 2174+11.16, 37.02' RT



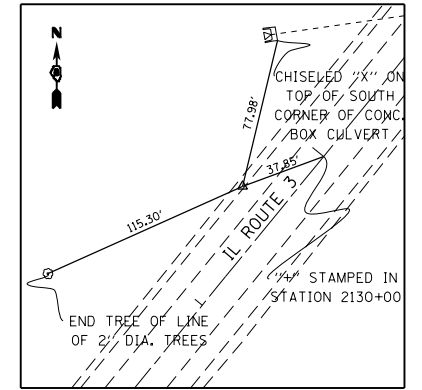
CP 2
IRON PIN W/ CAP
615,533.8660 N
2,300,661.0090 E
STA 2160+94.14, 41.39' RT



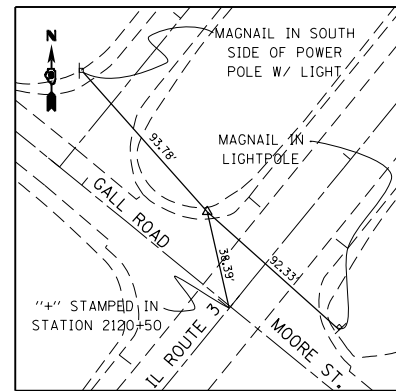
CP R3
IRON PIN
614,528.2420 N
2,300,244.9330 E
STA 2150+09.95, 53.07' LT



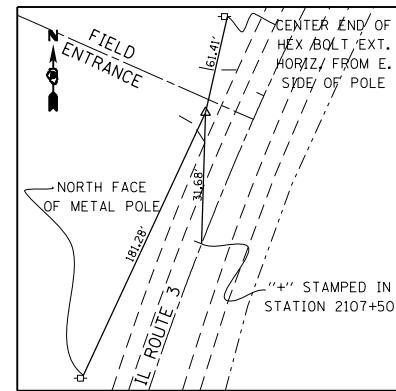
CP 4
IRON PIN W/ CAP
613,730.9360 N
2,300,023.8330 E
STA 2142+15.68, 23.10' RT



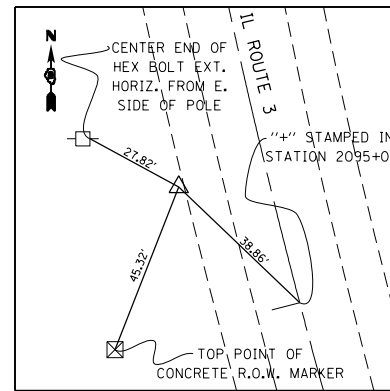
CP 5
IRON PIN W/ CAP
612,816.3770 N
2,299,197.9600 E
STA 2129+61.28, 22.81' LT



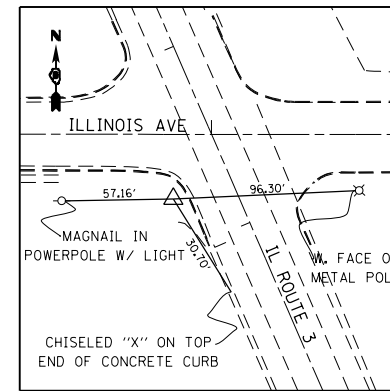
CP 6
IRON PIN W/ CAP
612,107.5720 N
2,298,596.2740 E
STA 2120+31.70, 40.59' LT



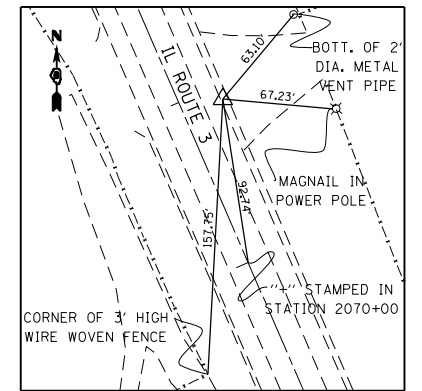
CP 7
IRON PIN W/ CAP
611,080.8720 N
2,297,865.9940 E
STA 2107+75.87, 28.85' LT



CP 8
IRON PIN W/ CAP
609,850.9650 N
2,297,764.0390 E
STA 2095+36.72, 23.18' LT



CP 9
IRON PIN W/ CAP
608,724.4040 N
2,298,212.5060 E
STA 2083+27.09, 31.62' LT



CP 10
IRON PIN W/ CAP
607,613.2740 N
2,298,755.1870 E
STA 2070+87.95, 20.99' RT

LAST SAVED = 1/25/2013
PEN TABLE = V0.4414141
PLOT DRIVER = pdfNCLAYERShp21.ctb

FILE NAME =	USER NAME = beriechmann	DESIGNED -	REVISED -
I:\1001100\Phase II - 76817\Cad\T\Plans\007_0876817-shr-ATB-8.dgn		DRAWN -	REVISED -
	PLOT SCALE = 100.0000' / 1"	CHECKED -	REVISED -
	PLOT DATE = 1/25/2013 3:29:10 PM	DATE -	REVISED -

STATE OF ILLINOIS
DEPARTMENT OF TRANSPORTATION

HORNER &
SHIRIN, INC.
ENGINEERS

ALIGNMENTS, TIES, AND BENCHMARKS

SCALE: NONE

SHEET NO. 8 OF 20 SHEETS

STA.

TO STA.

F.A.P. RTE.	SECTION	COUNTY	TOTAL SHEETS	SHEET NO.
312	68-WRS-1	MONROE	760	88
CONTRACT NO. 76817			ILLINOIS FED. AID PROJECT	