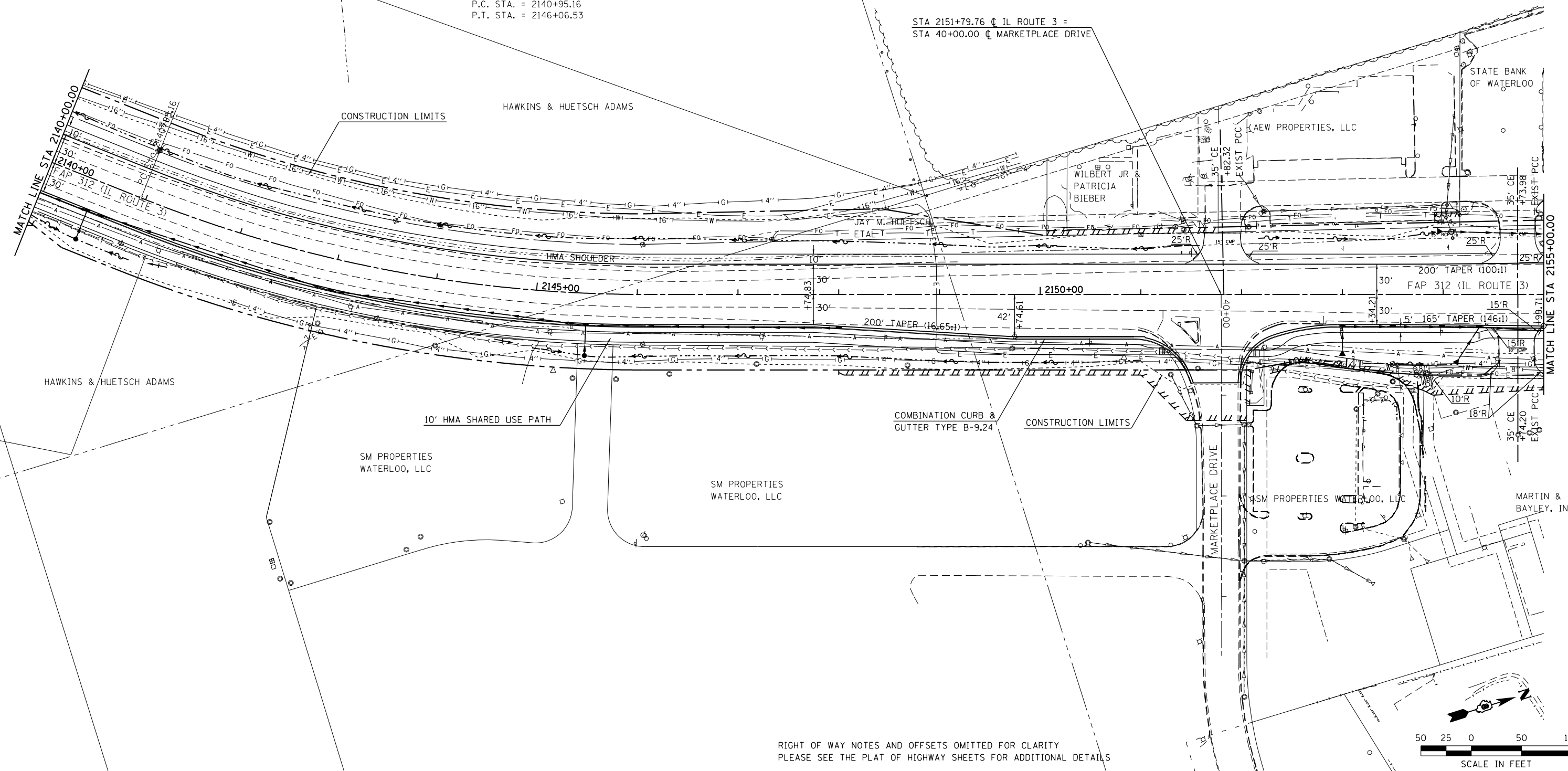


EXIST. CURVE IL3CUR6  
 P.I. STA. = 2143+53.96  
 $\Delta = 21^\circ 43' 59''$  (LT)  
 $D = 4^\circ 15' 00''$   
 $R = 1,348.14'$   
 $T = 258.79'$   
 $L = 511.36'$   
 $E = 24.61'$   
 $e = 6.0\%$   
 $T.R. = 45'$   
 $S.E. RUN = 133'$   
 $P.C. STA. = 2140+95.16$   
 $P.T. STA. = 2146+06.53$

STA 2151+79.76  $\bar{C}$  IL ROUTE 3 =  
 STA 40+00.00  $\bar{C}$  MARKETPLACE DRIVE



RIGHT OF WAY NOTES AND OFFSETS OMITTED FOR CLARITY  
 PLEASE SEE THE PLAT OF HIGHWAY SHEETS FOR ADDITIONAL DETAILS

LAST SAVED = 1/23/2013  
 PEN TABLE = 10244141  
 PLOT DRIVER = pdfnclayersbwin.ctb

FILE NAME =	USER NAME = beriechmann	DESIGNED -	REVISED -
1:\1001100\Phase II - 76817\Cad\T\Plans\034_0876817-sht-plan-12.dgn		DRAWN -	REVISED -
	PLOT SCALE = 100.0000' / 1"	CHECKED -	REVISED -
	PLOT DATE = 1/25/2013 3:30:04 PM	DATE -	REVISED -

**STATE OF ILLINOIS**  
**DEPARTMENT OF TRANSPORTATION**

**HORNER & SHIRIN, INC.**  
**ENGINEERS**

**PLAN**  
 FAP 312 (IL ROUTE 3)  
 SCALE: 1" = 50'  
 SHEET NO. 23 OF 40 SHEETS  
 STA. 2140+00.00 TO STA. 2155+00.00

F.A.P. RTE.	SECTION	COUNTY	TOTAL SHEETS	SHEET NO.
312	68-WRS-1	MONROE	760	123
CONTRACT NO. 76817				
ILLINOIS FED. AID PROJECT				