
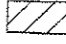

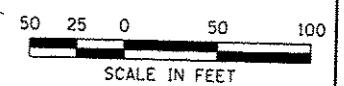
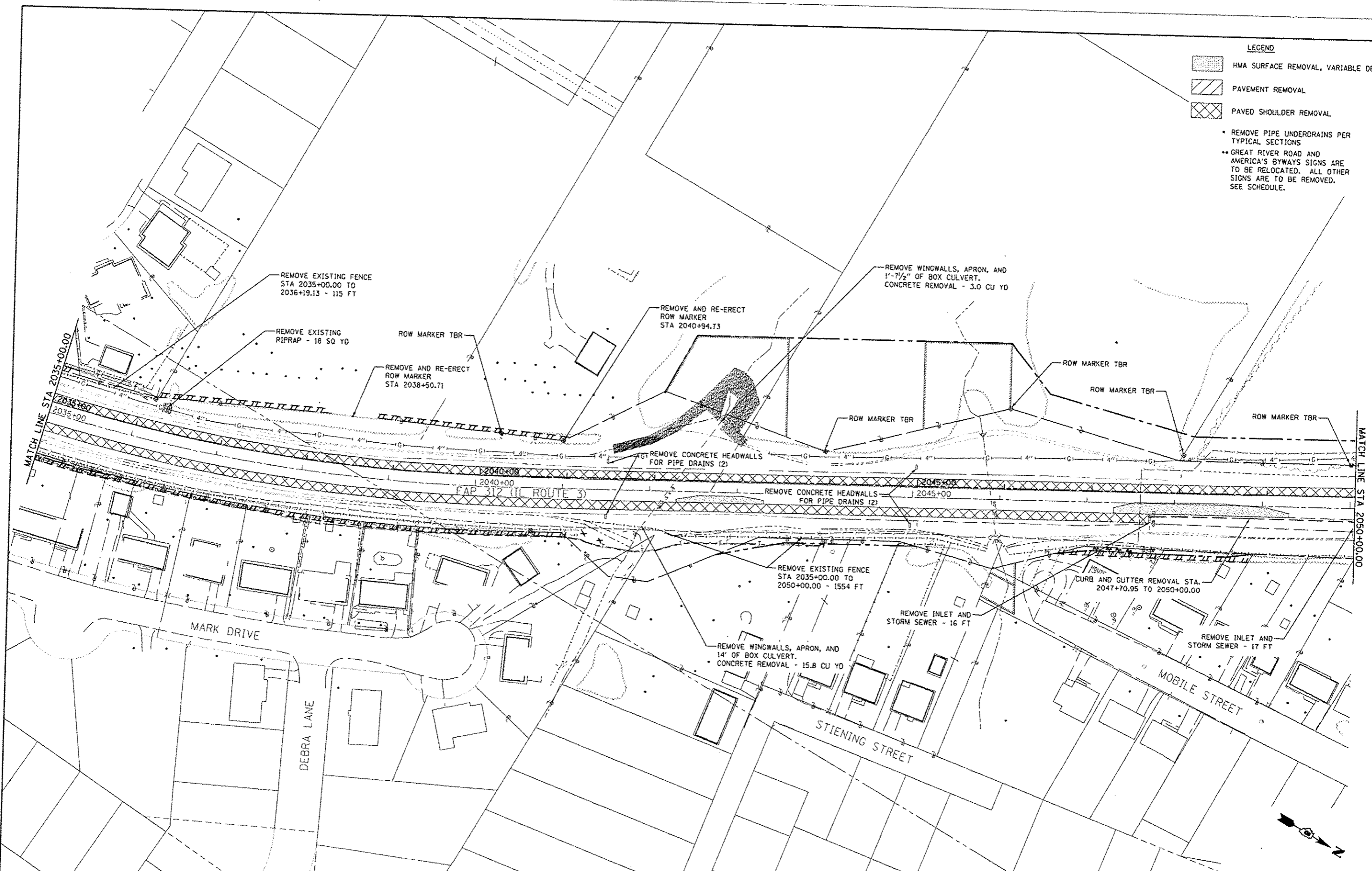


- LEGEND**
-  HMA SURFACE REMOVAL, VARIABLE DEPTH
 -  PAVEMENT REMOVAL
 -  PAVED SHOULDER REMOVAL

- REMOVE PIPE UNDERDRAINS PER TYPICAL SECTIONS
- GREAT RIVER ROAD AND AMERICA'S BYWAYS SIGNS ARE TO BE RELOCATED. ALL OTHER SIGNS ARE TO BE REMOVED. SEE SCHEDULE.



FILE NAME - F:\Projects\1001 PROJECTS\29-181-11-11-11	USER NAME - Richard Hainke	DESIGNED - JAH	REVISED - 4/8/13	<p align="center">STATE OF ILLINOIS DEPARTMENT OF TRANSPORTATION</p> <p align="center">McDonough-Willow, P.C. PROFESSIONAL DESIGN NO. 184-002754</p> <p>SCALE: 1" = 50'</p>	<p align="center">REMOVAL PLAN IL ROUTE 3</p> <p>SHEET NO. 5 OF 19 SHEETS STA. 2035+00.00 TO STA. 2050+00.00</p>	F.A.P. RTE. 312	SECTION 68-WRS-1	COUNTY MONROE	TOTAL SHEETS 760	SHEET NO. 145
PLOT SCALE = 1/8" = 1' IN.	CHECKED - TMM	DATE	CONTRACT NO. 76817			ILLINOIS FED. AID PROJECT				
PLOT DATE = 2/14/2013										