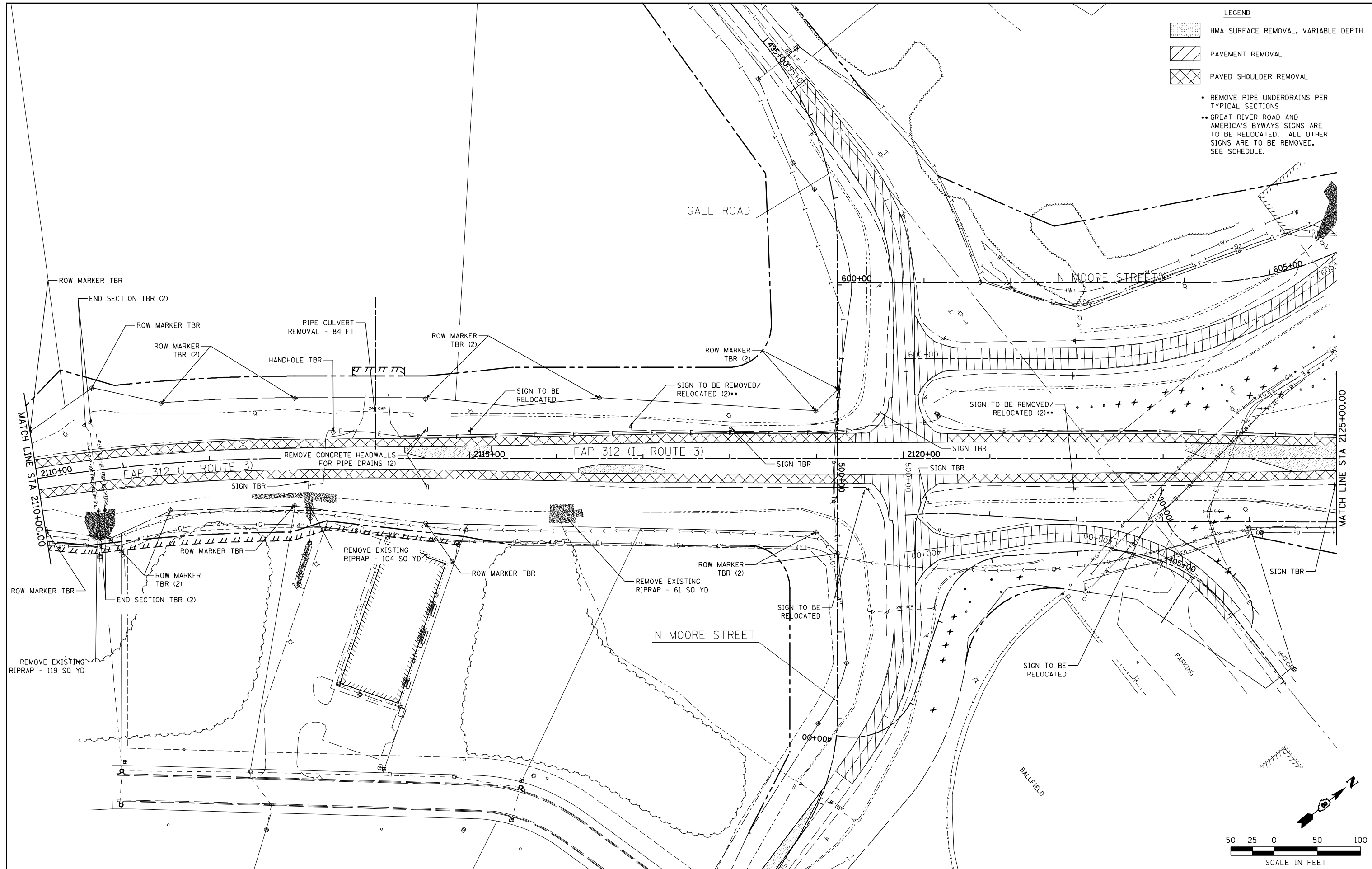


LEGEND

	HMA SURFACE REMOVAL, VARIABLE DEPTH
	PAVEMENT REMOVAL
	PAVED SHOULDER REMOVAL

- REMOVE PIPE UNDERDRAINS PER TYPICAL SECTIONS
- GREAT RIVER ROAD AND AMERICA'S BYWAYS SIGNS ARE TO BE RELOCATED. ALL OTHER SIGNS ARE TO BE REMOVED. SEE SCHEDULE.



FILE NAME = F:\Projects\IDOT PROJECTS\09-101-11.4\Drawings\CADD Sheets\Contract 2\160.0876817-sh	USER NAME = Richard Heinke	DESIGNED - JAH	REVISED -	STATE OF ILLINOIS DEPARTMENT OF TRANSPORTATION	 McDonough Willow P.C. PROFESSIONAL DESIGN NO. 184-002754	REMOVAL PLAN IL ROUTE 3	F.A.P. RTE. 312	SECTION 68-WRS-1	COUNTY MONROE	TOTAL SHEETS 760	SHEET NO. 150		
PLOT SCALE = 100.0000' / in.	CHECKED - TMM	REVISOR - RNH	REVISOR -				SCALE: 1" = 50'	SHEET NO. 10 OF 19 SHEETS	STA. 2110+00.00 TO STA. 2125+00.00	CONTRACT NO. 76817			
PLOT DATE = 1/24/2013	DATE -	REVISOR -	REVISOR -				ILLINOIS FED. AID PROJECT						