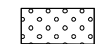



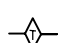


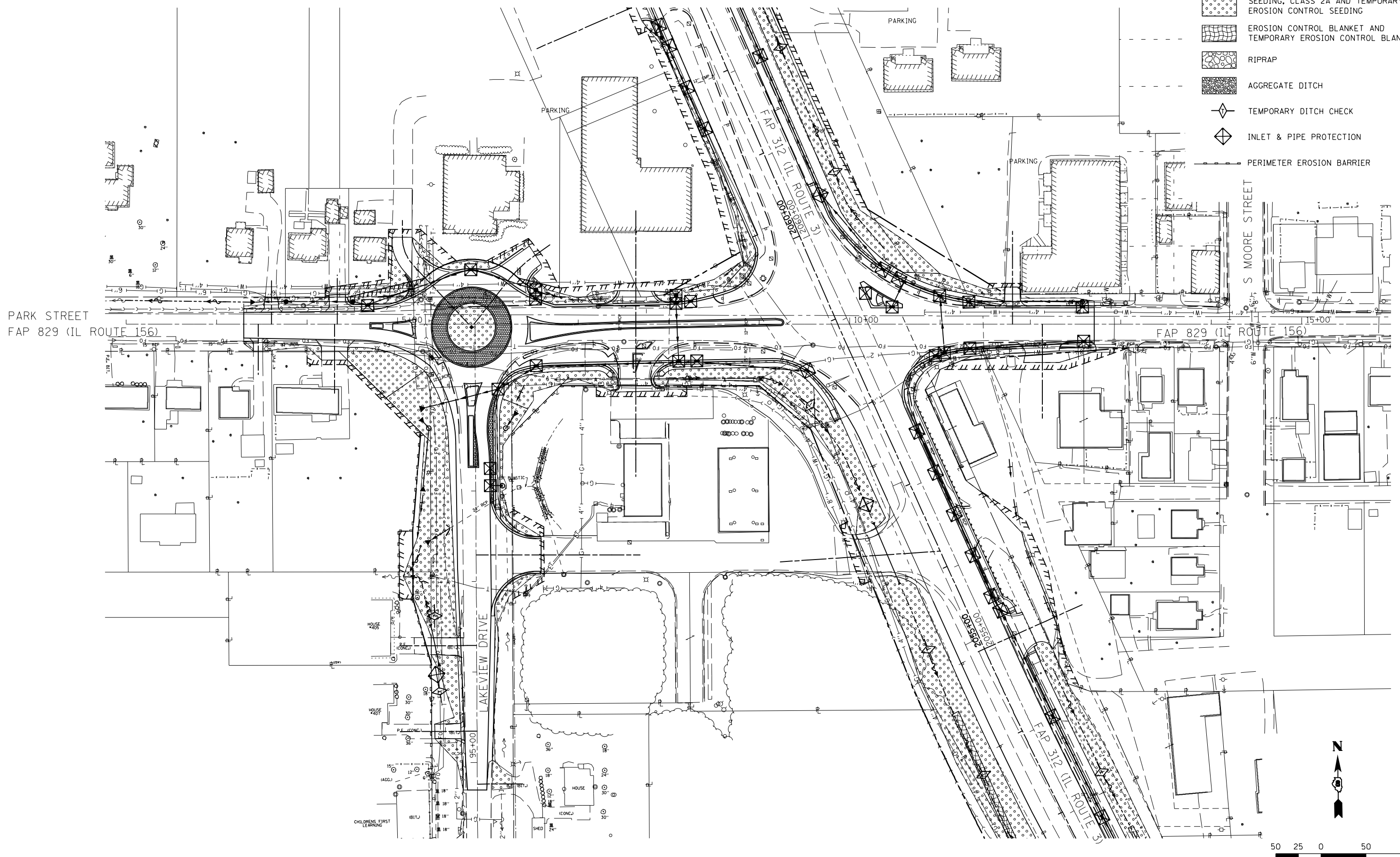


LEGEND

-  SEEDING, CLASS 2A AND TEMPORARY EROSION CONTROL SEEDING
-  EROSION CONTROL BLANKET AND TEMPORARY EROSION CONTROL BLANKET
-  RIPRAP
-  AGGREGATE DITCH
-  TEMPORARY DITCH CHECK
-  INLET & PIPE PROTECTION
-  PERIMETER EROSION BARRIER



PARK STREET
FAP 829 (IL ROUTE 156)

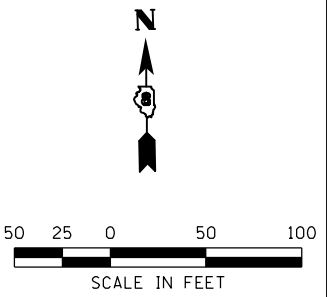
FAP 829 (IL ROUTE 156)


S MOORE STREET

LAKEVIEW DRIVE

FAP 312 (IL ROUTE 3)

FAP 312 (IL ROUTE 3)



FILE NAME =	USER NAME = Richard Heinke	DESIGNED - JAH	REVISED -	STATE OF ILLINOIS DEPARTMENT OF TRANSPORTATION	 McDonough-Whitlow P.C. PROFESSIONAL DESIGN NO. 184-022754	EROSION CONTROL PLAN IL ROUTE 156 & LAKEVIEW DR.		F.A.P. RTE.	SECTION	COUNTY	TOTAL SHEETS	SHEET NO.
F:\Projects\IDOT PROJECTS\09-101-11.4\Drawings\CADD Sheets\Contract 2\116_0876817-sh	DRAWN - RNH	CHECKED - TMM	REVISED -			312	68-WRS-1	MONROE	760	224		
PLOT SCALE = 100.0000' / in.	DATE -	REVISI	REVISI			CONTRACT NO. 76817						
PLOT DATE = 1/24/2013	DATE -	REVISI	REVISI			ILLINOIS FED. AID PROJECT						